

The
CHESTNUT BURR



Placement Office



Ex Libris

Copyright 1934


by

ANNE TESCHER, *Editor*

WM. LANGELL, *Business Manager*



The 1934
**Chestnut
Burr**



Digitized by the Internet Archive
in 2011 with funding from
LYRASIS Members and Sloan Foundation

<http://www.archive.org/details/chestnutburr1934kent>



The
Chestnut Burr
■ *of* 1934

Kent State College
Kent, Ohio

Foreword

That this book may tend to strengthen the bond of loyalty between the students of Kent and the college itself, by serving in the future as a means of reminiscences of pleasant days spent here, has been the fervent wish of the editor while assembling this volume.





Contents

The College

Classes

Organizations

Fraternities and Sororities

Athletics

Features

Dedicated



ion



To praise one who has cultivated the art of living; to show appreciation of one who speaks fearlessly the convictions of his heart and with beauty the truths of his mind; finally to express admiration of one whose untiring and inspirational efforts have resulted in the development of Kent State College, this Chestnut Burr of 1934 is dedicated to

DR. J. O. ENGLEMAN

Board of Trustees

E. L. BOWSHER, *President and Treasurer*

JOHN R. WILLIAMS, *Vice President*

ALMA ZINNINGER, *Secretary*

CARL D. FRIEBOLIN

B. O. SKINNER (*ex officio*)



The College

Faculty

DEANS

B. A. Verder
R. E. Manchester
J. L. Blair
O. H. Williams

REGISTRAR

E. C. Stopher

BUSINESS MANAGER

B. F. Renkert

ASSISTANT

TREASURER

A. O. King

SECRETARY TO

DEAN VERDER

Jeanne Parrish

AGRICULTURE

J. T. Johnson
M. E. Wagoner

ART

N. S. Humphrey
H. A. Adams
M. K. Boswell
D. Jones

BIOLOGY

H. A. Cunningham
E. Gowans
S. A. Harbourt
C. R. Shaw

COMMERCE

J. E. Magee
A. L. Thrasher

EDUCATION AND

PSYCHOLOGY

D. W. Pearce
J. L. Blair
R. M. Clark
A. L. Heer
H. H. Helter
S. M. Kochler
F. Musselman
A. W. Stewart

ENGLISH

C. E. Satterfield
F. G. Beall
E. T. Griebling
A. J. Hyatt
E. Packard
E. H. Pake
K. R. Pringle
K. von Levern



Faculty

GEOGRAPHY

D. Olson
J. R. Beck

HEALTH AND PHYSICAL EDUCATION

A. O. DeWeese
G. J. Altmann
M. H. Apple
R. Bass
J. W. Begala
E. D. Brenneman
G. Drew
A. Peterka
M. E. Wagoner

HISTORY AND SOCIAL SCIENCE

A. S. Roberts
T. E. Davey
M. Fletcher
E. A. Meyer
L. A. Tohill
O. H. Williams

HOME ECONOMICS

B. L. Nixon
N. I. Jordan

JOURNALISM AND PUBLICITY

B. F. Engleman

KINDERGARTEN- PRIMARY

G. H. Swan

LATIN

I. Hazen

LIBRARY

M. L. Dunbar
E. M. Brenner
I. Dunbar
M. E. Mautz
M. E. Thurston

MANUAL TRAINING

C. S. Van Deusen
E. W. Tischendorf

MATHEMATICS

R. E. Manchester
H. P. Rogers
H. E. Stelson



Faculty

MODERN LANGUAGES

E. B. Rowlen
A. S. Schafheitlin
W. J. Burner

MUSIC

F. M. Sublette
E. Littlejohn
H. M. McClafflin
R. D. Metcalf
C. J. Velie
R. Venner

PHILOSOPHY

M. Baum

PHYSICAL SCIENCE

C. F. Rumold
A. W. Coven
A. B. Garrett
M. B. Palmer

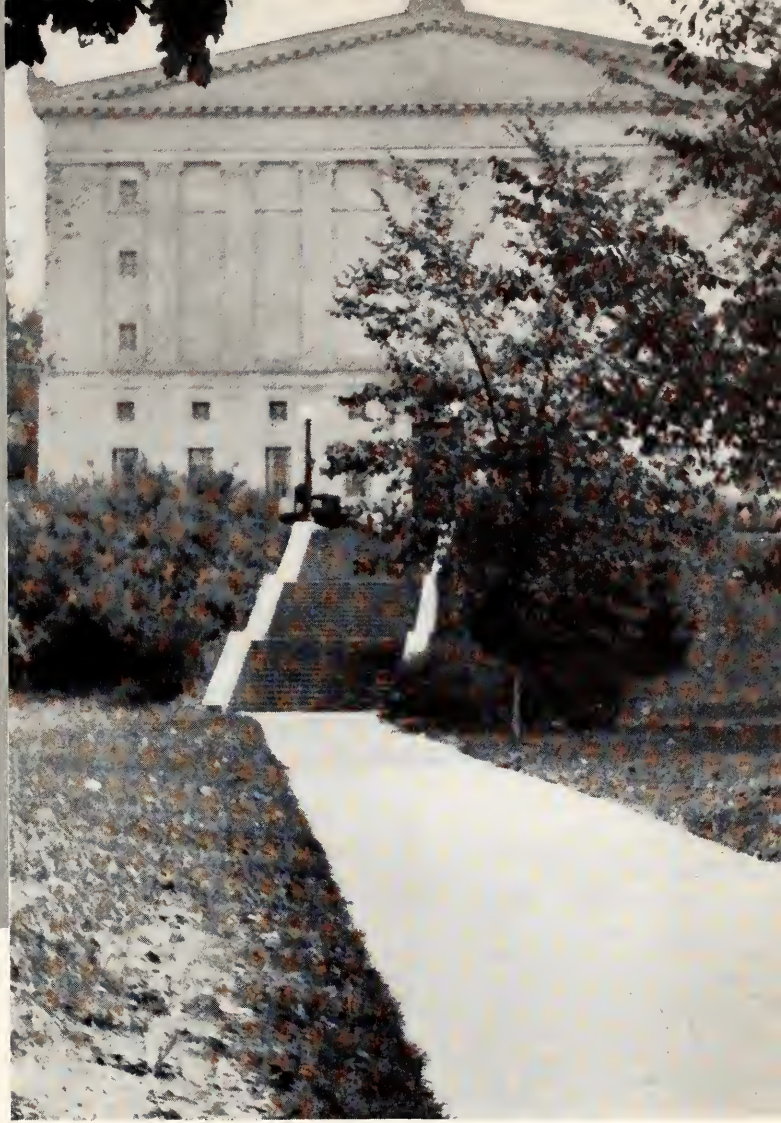
SPEECH

E. T. Stump
M. Mozena

TRAINING SCHOOL

A. L. Heer
F. N. Harsh
G. Chapman
G. Damann
I. Hazen
A. I. Herriff
D. B. Kinneman
E. R. Meyer
B. C. Miller
E. M. Olson
N. Richards
N. B. Schaeffer
D. D. Scott
N. D. Wood
O. B. Bachman
A. Broadbent
S. M. Kochler
K. von Levern
M. S. Neitz
R. M. Parrish
M. Shepard
P. J. Phillips
L. E. Hill





Classes



In Memoriam

C. E. OLIVER


East Palestine, Ohio

Trustee

LOUIS FOGG

Kent, Ohio

Class of 1933





Seniors



MARGARET ACKEN
Akron, Ohio



BETTE ANDERSON
Kent, Ohio



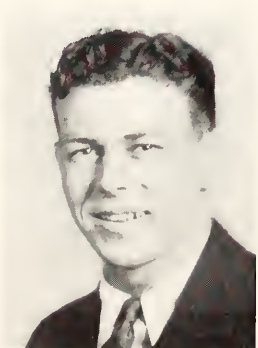
IRIS APPELHANS
Cuyahoga Falls, Ohio



DON ALDERMAN
Orwell, Ohio



DUANE BAKER
Cuyahoga Falls, Ohio



MERLE BAKER
Woodsfield, Ohio

FRANKLIN BARLOW
Hudson, Ohio

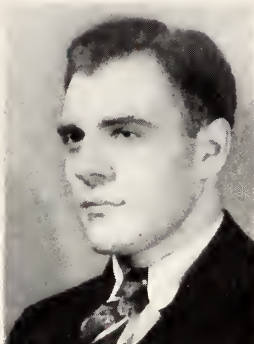


ANNE BERNARD
Youngstown, Ohio





FREDA BEYMER
Sandyville, W. Va.



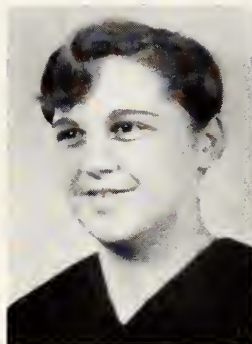
STEPHEN BORSIC
Campbell, Ohio



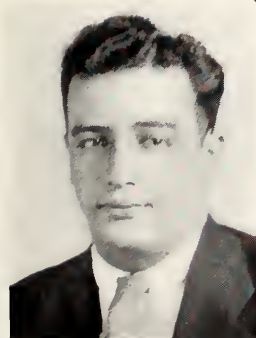
WILDA BELLE BOSCH
Cleveland, Ohio



RALPH BOYD
Akron, Ohio



EVELYN BRILLHART
Elyria, Ohio



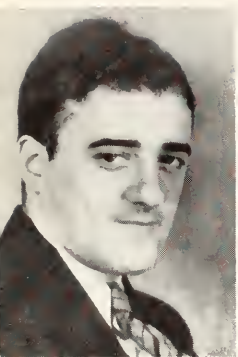
ARTHUR CANIGLIA
Ravenna, Ohio



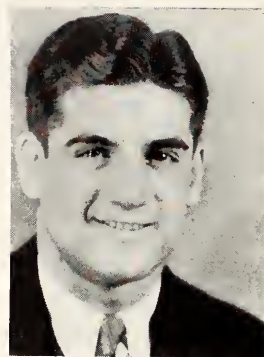
THOMAS BURKE
Lima, Ohio



JOE CARL
Ravenna, Ohio



PETER CIPRIANO
Ravenna, Ohio



SAM CIPRIANO
Ravenna, Ohio



VERA COCHRAN
Cuyahoga Falls, Ohio



GRACE CLINKER
Lodi, Ohio



BERNARD COLDIRON
Warren, Ohio



RUTH COLLIER
Wadsworth, Ohio

DON COOK
Kent, Ohio

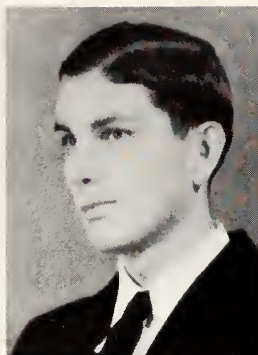


BLAINE CONLEY
Akron, Ohio





JOHN CONVERSE
Cleveland, Ohio



RUSSELL COVER
Canton, Ohio



VIRGINIA CROWL
Ravenna, Ohio



EVELYN DICK
Windham, Ohio



BYRNE DEWEESE
Kent, Ohio



VESTA DONALDSON
East Palestine, Ohio



CATHERINE
DINGLELINE
Cuyahoga Falls, Ohio



ELMER DUNLAVY
Ravenna, Ohio



HELEN DUNSTAN
E. Cleveland, Ohio



MARY J. FAIRCHILD
Ravenna, Ohio



KARL FALLS
Kent, Ohio



LOUIS EGERER
Kent, Ohio



SEYMOUR FEAR
Youngstown, Ohio



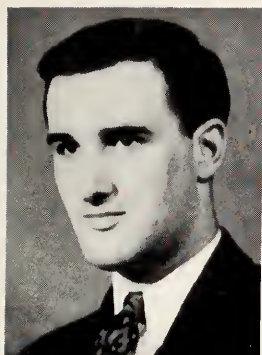
FLORENCE FLOWER
Kent, Ohio

MATTHEW FLOWER
Youngstown, Ohio



LUCILE GALLOWAY
Kent, Ohio

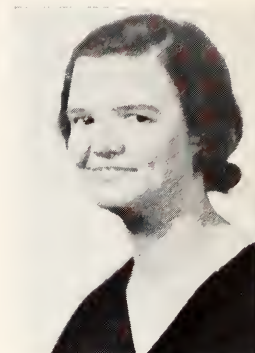




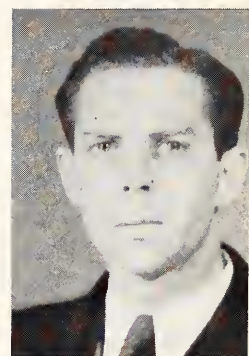
HAROLD GEAR
Kent, Ohio



CORVIN GERIG
Wooster, Ohio



MAE GICQUELAIS
Akron, Ohio



DONALD GILLETT
Lorain, Ohio



CHARLES GLATZER
Cleveland, Ohio



DOROTHY GORDON
Painesville, Ohio



A. HOYE GODFREY
Warren, Ohio



LAUREL HANLEY
Kent, Ohio



NAOMI HANNA
Hubbard, Ohio



RUBY HARRIS
Bedford, Ohio



EMMALENE HART
Cleveland, Ohio



MARY HARDING
Cleveland, Ohio



GOLDIE HASLER
Beach City, Ohio



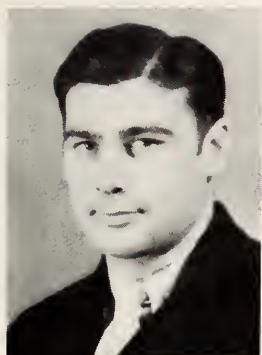
FOREST HAWK JR.
Stow, Ohio



HARLAN HAYES
Garrettsville, Ohio



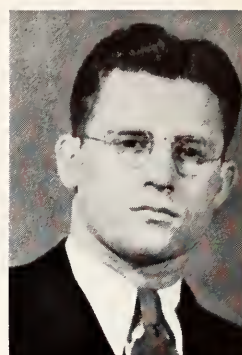
EUNICE HINES
Collins, Ohio



KENNETH HISSNER
Greentown, Ohio



HELEN HOFFMAN
Cleveland, Ohio



FORDER HOFUS
Diamond, Ohio



WILLIAM HOSFIELD
Akron, Ohio



ROSS HOY
Bristolville, Ohio



GEORGE JAMESON
Akron, Ohio



GUY IARUSSI
Ravenna, Ohio



JANET JONES
Ravenna, Ohio



EVELYN KEIFER
Kent, Ohio



KAY KENNEY
Ravenna, Ohio



W. EDWARD KINCAID
Amesbury, Mass.



LOWER KELLOG
Kent, Ohio



EDNA KING
Ravenna, Ohio



HARRY KIRK
Mogadore, Ohio



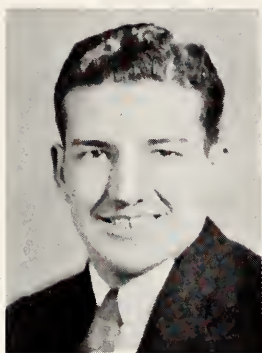
JOHN KLEIN
Cuyahoga Falls, Ohio



RUTH KUKUK
McDonald, Ohio



JOSEPHINE LANESE
South Euclid, Ohio



WILLIAM LANGELL
Wooster, Ohio



HAROLD LAW
Kent, Ohio



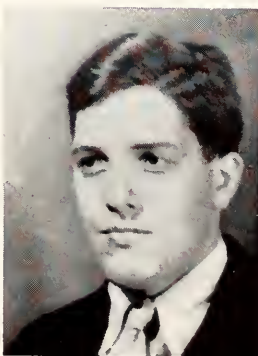
SAM LENNON
Coshocton, Ohio



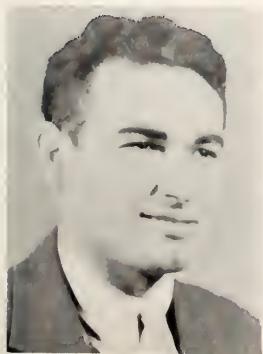
ROGER LEWIS
Cuyahoga Falls, Ohio



RUTH LOOMIS
Ravenna, Ohio



OLIVER LODGE
Cuyahoga Falls, Ohio



JOSEPH LOSITO
Harrison, N. Y.



LOETTA LOVEJOY
Neffs, Ohio



SAMUEL MANCOVITZ
Akron, Ohio



MAURICE MANEY
Conneaut, Ohio



ELLA MAJOR
Akron, Ohio



ETHEL MAURER
Canfield, Ohio



MILDRED
McCONOUGHEY
Bedford, Ohio



JOHN MCKAY
Akron, Ohio



ELWOOD MILLER
Akron, Ohio



EVAH MILLER
Parkersburg, W. Va.



GLADYS MOORE
Kent, Ohio



IRMA MURPHY
Kent, Ohio



SULA NEALE
Akron, Ohio



DAVID NELSON
Uhrichsville, Ohio



MRS. W. D.
NICKERSON
Stow, Ohio



LILLIAN NEUMANN
Cuyahoga Falls, Ohio



DONALD PADDOCK
Cuyahoga Falls, Ohio



ARLENE PALMER
New Philadelphia, Ohio



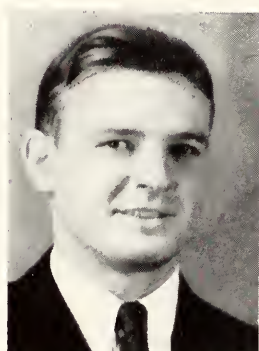
ROBERT PEEBLES
Cuyahoga Falls, Ohio



SOPHIA PIECHOWSKI
Canton, Ohio



DON PARKINSON
Kent, Ohio



CHARLES R. POOLE
South Euclid, Ohio



VIOLETTE POPP
Lorain, Ohio

LUCILE PRICE
Cuyahoga Falls, Ohio



IRENE PUFFER
Cuyahoga Falls, Ohio





HARRIET REAM
Canton, Ohio



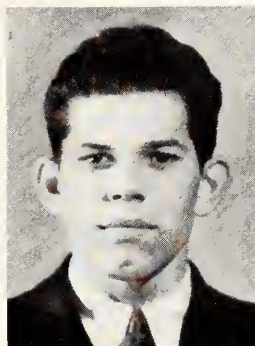
JOSEPH RINALDI
Kent, Ohio



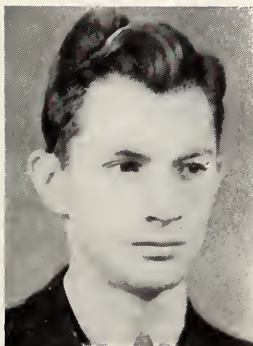
ALVIN ROMITO
Cuyahoga Falls, Ohio



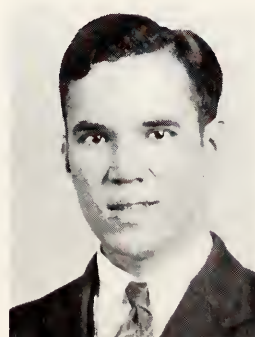
MARCELLA RUSH
Big Prairie, Ohio



JOHN RYZNAR
McDonald, Ohio



LESTER SABIN
Randolph, Ohio



WILLIAM SAARI
Conneaut, Ohio



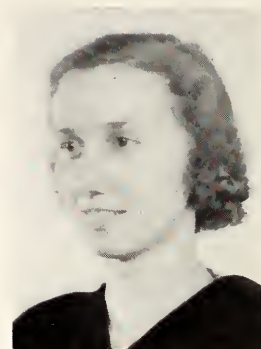
BETTY SARRATT
Steubenville, Ohio



LOUISE SAUCE
Youngstown, Ohio



ANNA SCHROEDER
Cleveland Hts., Ohio



NADINE SCHUMACHER
Canton, Ohio



MILTON SCHOPFER
Killbuck, Ohio



FRED SCOTT
Ravenna, Ohio



FRITZ SEGNER
Massillon, Ohio

WALTER SEIFERT
Lakewood, Ohio



ALBERT
SHAMBARGER
South Euclid, Ohio





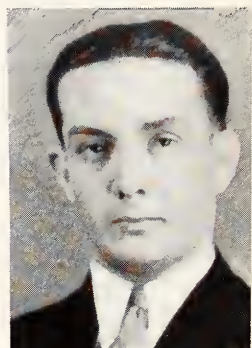
MARY E. SNYDER
Lorain, Ohio



ROBERT SNODGRASS
Northfield, Ohio



CLARABEL SPACHT
Mantua, Ohio



HOWARD SPILLER
Kent, Ohio



REG STAM
Cleveland, Ohio



MARGARET STEIGNER
Kent, Ohio



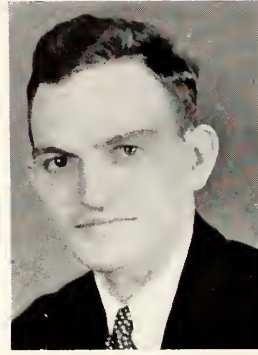
ELI STEIGNER
Kent, Ohio



EVANGELINE STILES
East Cleveland, Ohio



PAULINE STONEHILL
Robertsville, Ohio



CLARENCE STRAUB
Hudson, Ohio



HELEN STRUM
Akron, Ohio



PAUL STRAHL
Ravenna, Ohio



LUCILLE TARR
Toronto, Ohio



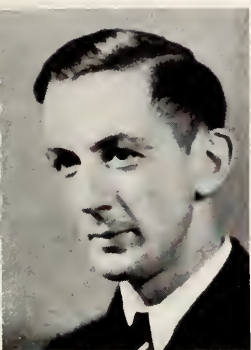
MARTHA TAYLOR
Bucyrus, Ohio

ANNE TESCHER
Ravenna, Ohio

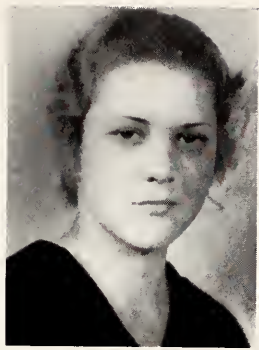


VIVIAN THOMAS
Youngstown, Ohio





VIRGIL UTTERBACK
Dellroy, Ohio



JEANNETTE VAN FLEET
Cleveland, Ohio



HELEN VAUGHN
New Milford, Ohio



LUCELLE WALSH
Youngstown, Ohio



LAWERENCE
WATROUS
Ashtabula, Ohio



DALE WHITE GIBSON
Cuyahoga Falls, Ohio



RUTH WEIGAND
Painesville, Ohio



Lois K.
WHITELEATHER
Kent, Ohio



PAULINE WILD
Cuyahoga Falls, Ohio



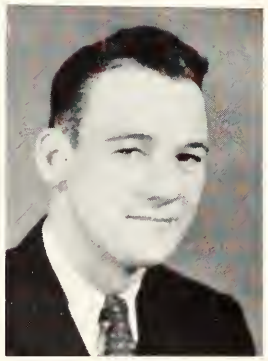
LOIS WILLIAMS
Lakewood, Ohio



RALPH WILLIAMS
New Philadelphia, Ohio



FRANKLIN WILLIAMS
Kent, Ohio



JOHN H. WILSON
Wooster, Ohio



HELEN WOODRUFF
Cuyahoga Falls, Ohio



EARL WRIGHT
Junction City, Ohio

Senior Activities

SENIOR OFFICERS

President Joe Carl
Vice President Pauline Stonchill
Secretary Peg Rush
Treasurer Harold Gear

DONALD E. ALDERMAN

Alpha Phi Beta; Biology Club;
 Beta Zeta; Men's Union; Band,
 1, 2, 3, 4; Intra Murals.

DUANE R. BAKER

Alpha Phi Beta, Sec. 4; Mathe-
 matics Club, Sec. 3, 4.

ANNE BERNARD

Moulton Hall, Vice Pres. 2,
 Treas. 4; Glee Club, 1; Y. W.
 C. A., 3.

WILDA BELLE BOSCH

Alpha Sigma Tau; Social Com-
 mittee, 1, 4; Glee Club; Mixed
 Chorus, Sec. and Treas.; Pan
 Hellenic, 4.

ARTHUR J. CANIGLIA

Varsity K Club, 2, 3, 4; Kappa
 Sigma Chi, 2, 3, 4; Football,
 2, 3, 4; Track, 2; Wrestling, 2,
 3; Manual Arts Club, 3, 4;
 Physical Education Club, 3, 4.

JOE CARL

Kappa Sigma Chi, Pres.; Pres.
 Senior Class; Student Council;
 Blue Key; Biology Club; Phy-
 sical Education Club; Fresh-
 man Coach; Football, 1, 2, 3;
 Basketball, 2, 3, 4; Track, 3;
 Phi Epsilon Kappa; Interfra-
 ternity Council.

PETER F. CIPRIANO

Executive Social Committee, 4;
 Freshmen-Sophomore Debate,
 1, 2; Kappa Sigma Chi; Chest-
 nut Burr, 3; Varsity Debate, 2.

SAM CIPRIANO

Varsity Football, 2, 3, 4;
 Wrestling, 2, 3; Baseball, 2, 3,
 4; Class Vice Pres., 3; Varsity
 "K" Association; Men's Glee
 Club, 1, 2; Manual Arts Club,
 2, 3, 4; Kappa Sigma Chi, 2, 3,
 4; Physical Education Club;
 Intra Mural Council, 3, 4; In-
 tra Mural Track.

VERA COCHRAN

Sigma Sigma Sigma; Off Camp-
 us Women's Club, Pres., 4;
 Kindergarten Primary Club;
 Cardinal Key; College Thea-

RUTH COLLIER

Wooster College, 1, 2; Alpha
 Sigma Tau, Sec. 4.

RUSSELL G. COVER

Alpha Phi Beta, Sec. 1, 2, 3, 4;
 Inter-Fraternity Council, 4;
 Men's Glee Club, 3, 4; Y. M.
 C. A., 1, 3, 4; Math. Club, 3;
 Social Committee, 3; Men's
 Union; Intra Murals; Canton
 Club.

EVELYN DICK

Madrigal Club, Sec. and Treas.
 2; Glee Club, 1, 2, 3, 4,
 Pres. 4; College Choir, 4; Sig-
 ma Delta Nu, Sec. 3; Music
 Club, Vice Pres. 3; Mixed
 Chorus, 1, 2, 3, 4; Kent Stat-
 er, 1.

VESTA DONALDSON

Beta Zeta; Biology Club; Glee
 Club; Mixed Chorus; Y. W. C.
 A.; Women's League.

MARY JANE FAIRCHILD

Flora Stone Mather College, 1;
 Women's League Social Chair-
 man, 2; Velvet Curtains, 3, 4;
 Cardinal Key, 4; Stater Staff,
 3, 4; Chestnut Burr Staff, 3;
 Alpha Sigma Alpha, Editor 3,
 Pres. 4.

KARL FALLS

Transfer from Akron U.; Kap-
 pa Mu Kappa; Commerce Club,
 1, 2, 3, 4; Football, 3, 4;
 Chorus, 2, 3.

MATTHEW A. FLOWER

Kappa Sigma Chi; Physical
 Education Club; Manual Arts
 Club; Varsity "K" Associa-
 tion; Football, 2, 3, 4; Wrest-
 ling, 2, 3, 4; Baseball, 2; Intra
 Murals; Phi Epsilon Kappa.

HAROLD L. GEAR

Delta Phi Sigma, 1, 2, 3, 4;
 Chaplain, 2, Sec. 3; Vice Pres.,
 4; Blue Key, Sec. 4; Glee Club,
 Business Manager, 3; Football,
 1, 2, 3; Varsity "K" Club, 2,
 3, 4; Class Treas., 4; Kent
 Stater, 1; Chestnut Burr, 2;
 College Male Quartet, 4; Mad-
 rigal Club, 4; College Choir.

CORVIN GERIG

Delta Phi Sigma, secretary 2,
 sarg. at arms 3, treasurer 4;
 Basketball, 1, 2, 3, 4; Base-
 ball, 2, 3.

CHARLES GLATZER

Delta Phi Sigma; Y. M. C. A.,
 Pres., 4; Blue Key; Physical
 Education Club; Varsity "K";
 Phi Sigma Kappa; Student
 Advisor to Kent State Hi-Y;
 Cleveland Kent Club; Class
 Treasurer, 2.

DOROTHY GORDON

Women's League; Commerece
 Club; W. A. A.

NAOMI E. HANNA

Lambda Chi.

MARY HARDING

Biology Club; College Choir,
 4; Girl's Glee Club; Chorus;
 W. A. A.; French Club; Beta
 Zeta.

RUBY HARRIS

Y. W. C. A.; Girl's Glee Club;
 Chorus; Music Club.

GOLDIE HASLER

Women's League; Off Campus
 Women's Club; History Club,
 3; Biology Club, 3, 4, Sec. 4;
 August Diploma Class 1931.

FOREST HAWK, JR.

Delta Phi Sigma; Blue Key;
 Phi Mu, Pres. 3; Varsity "K"
 Club; Music Club; College
 Choir, 4; Men's Glee Club, 1,
 2, 3, 4; College Quartet, 4;
 College Orchestra, 1, 2, 3, 4;
 College Band, 3, 4; Tennis, 2,
 3, 4; Wrestling Mgr., 1, 2;
 Football Mgr., 4.

EUNICE HINES

College Theater; Alpha Psi
 Omega; Plays; Cradle Song,
 Wooden Kimona, Liliom, Your
 Uncle Dudley, Berkeley
 Square, The Last Warning;
 Chorus, 1; Junior-Senior Prom
 Queen, 3; Home Economics
 Club, Treas., V. Pres., Pres.;
 Alpha Sigma Tau, Correspond-
 ing Sec., V. Pres., Pres.; Col-
 lege Social Committee, 2, 3;
 Executive Social Committee, 3;
 Executive Council of Women's
 League, 3; Pan-Hellenic; Car-
 dinal Key.

KENNETH HISSNER

Wrestling; Kent Stater Staff;
 College Theater; Delta Phi
 Sigma; Commerce Club.

HELEN HOFFMAN

Delta Sigma Epsilon, Pres. 4,
 Business Manager 3, 4; Car-
 dinal Key, Pres. 4; Pan
 Hellenic, 2, 3, 4; Velvet Cur-
 tain Players, 3, 4; College
 Theater; Y. W. C. A., Pres. 1.

ROSS HOY

Men's Glee Club, 2, 3, 4; Mixed
 Chorus, 2, 3; Basketball, 2;
 Biology Club, 3, 4; Physical
 Education Club, 4; Kappa
 Sigma Chi, Sec. 4.

LOWER H. KELLOGG

Y. M. C. A., 1, 2, 3, 4, Vice.
 Pres. 4; College Theater, 1, 2,
 3; Social Committee, 2; Inter-
 Frat. Council, Sec. 4; Alpha
 Phi Beta, Pres. 4; Math. Club,
 1, 3.

KAY KENNEY

Alpha Sigma Tau, Pres. 2,
 Sec. 3; Kent Stater Staff, 1, 2;
 Chestnut Burr Staff, 3; Kent
 State Council, 3; Student
 Council; Pan Hellenic, 2.

HARRY A. KIRK

Commerce Club; College Thea-
 ter, 1, 2, 3; Glider Club;
 Chestnut Burr; Glee Club;
 Rifle Club.

BILL LANGELL

Delta Phi Sigma; Velvet Cur-
 tain Players, 1; Glee Club, 2,
 3, 4; College Theater, Stage
 Manager 2; Alpha Psi Omega;
 Kent Stater Staff, 3, 4; Chest-
 nut Burr, Business Manager 4;
 Blue Key; Swimming Club.

Senior Activities

HAROLD LAW

Delta Phi Sigma, Chaplain 3, Pres. 4; Captain Debate Squad, 4; Kappa Gamma, Pres. 4; Blue Key, Pres. 4; Glider Club, Pres. 4; Varsity Track, 3; Student Council, 4; Y. M. C. A., 2; Inter-fraternity Council, 4; Chestnut Burr, Feature Editor 3.

SAM LENNON

Delta Phi Sigma; Baseball, 2, 3.

RUTH LOOMIS

Pi Delta Theta, President 3; K. P. Club; College Theater; Biology Club; Women's League; Off Campus Women's Club.

LOETTA L. LOVEJOY

Kindergarten Primary Club; Y. W. C. A.; Off Campus Women's Club; Biology Club.

ELLA MAJOR

Off Campus Women's Club; Women's League, Executive Council 3.

ETHEL MAURER

College of Education; Phi Alpha Alpha, Corresponding Sec. 4; French Club, 1, 2, 4.

SULA K. NEALE

Commerce Club; Alpha Sigma Tau, Corresponding Secretary.

LILLIAN NEUMANN

W. A. A.; Physical Education Club, Vice Pres. 3; Omega Phi Delta; Home Economics Club; W. A. A., Board 4; Executive Council, Senior Representative 4.

ARLENE PALMER

B.A. Ohio Wesleyan University; Theta Upsilon; Delta Omicron; College Theater; Plays; Gold in the Hills, Berkeley Square; Girls' Glee Club; Madrigal Club; Mixed Chorus; College Choir.

SOPHIA PIECHOUSKI

Biology Club; Canton Club; Home Economics Club.

CHARLES R. POOLE

Alpha Phi Beta, Treas. 1, 2, 3, 4; Beta Zeta; Biology Club, Vice Pres. 4; Le Cercle Français, Pres. 3; Cleveland Club.

LUCILE PRICE

Mathematics Club, Sec. and Treas.; Off Campus Women's Club, Treas.; French Club; Assistant in Mathematics Department.

RUTH KUKUK

Pi Kappa Sigma; Off Campus Women's Club; Women's League; French Club; Band; Stater Staff.

HARRIET REAM

W. A. A., 1, 2, 3, 4; Physical Education Club; College Theater; Omega Phi Delta.

ALVIN ROMITO

Kappa Sigma Chi, Vice Pres. 4; Physical Education Club, Pres. 4; Manual Arts Club; Varsity "K" Association; Baseball, 2; Intra Murals; Inter-Fraternity Council, 4; Gym Team, 4; Phi Epsilon Kappa.

MARCELLA RUSH

Theta Sigma Upsilon, Pres. 4, Editor 3; Class Treasurer, 4; Commercial Club, Sec. 4; Cardinal Key, Vice Pres. 4; Kent Stater, 3, 4; Chestnut Burr, Sorority Editor 4; Pan-Hellenic, 3, 4.

MARJORIE RUSSELL

Stater, Dabbler Column 1; Chi Pi, 2; College Theater, 2, 3; Delta Sigma Epsilon, Pres. 3, Corresponding Sec. 4.

JOHN W. RYZNAR

Blue Key, Treas. 3, 4; Lambda Chi, 3, 4; Barbarian, Pres. 3, 4; Social Committee, 3; Biology Club, 3; Intra Murals, 3, 4; Youngstown-Kent Club, Vice Pres.; Honor Roll, 1, 2, 3, 4.

WILLIAM S. SAARI

Men's Union; Kappa Sigma Chi, Social Chairman 4; Swimming Club, 2, 3.

LOUISE SAUSE

Velvet Curtain Players; College Theater; Y. W. C. A., 1, 2; Biology Club, 3; O. C. W. C.; Women's Debate, 4.

NADINE SCHUMACHER

Theta Sigma Upsilon, Sec. 4; Lambda Chi, Pres. 4; Pan Hellenic; College Social Committee.

WALTER W. SEIFERT

Sigma Tau Gamma; Vice President Freshman Class; President Sophomore Class; Assistant Editor Kent Stater; Editor Kent Stater; Blue Key; Velvet Curtains; College Theater; Playcast: "Life of Washington"; Freshman Football and Intra Murals; Kent State Council 1931-32; Student Council, 1933-34; College Social Committee.

ELI STEIGNER

Freshmen Players, 1; Velvet Curtains, 3; Glider Club, Treasurer 3, 4; Manual Arts Club, Vice Pres. 4; Editor of the Manual Arts Club Bulletin, 4; Student Assistant of the Manual Training Department, 4; College Theater, 2, 3, 4.

ALBERT D. SHAMBARGER

Delta Phi Sigma; Alpha Psi Omega, Director 4; Blue Key; College Theater, Manager 4; Ohio Wesleyan, 1; College Social Committee, 4; Executive Social Committee, 4; Velvet Curtain Players; Plays: Cock Robin, Craig's Wife, Liliom, Devil's Disciple, Sun-Up, Your Uncle Dudley, The Isle, Servant in the House, The Last Warning, Berkeley Square; College Orator, 4; Chestnut Burr, 3.

MARY ELIZABETH SNYDER

Theta Sigma Upsilon; Home Economics Club, 1, 2, 3, 4; Y. W. C. A., 1; College Theater, 2; Women's Glee Club, 3, 4; Mixed Chorus, 3, 4.

MARGARET STEIGNER

W. A. A., 1; Commerce Club, 3, 4; Women's League.

POLLY STONEHILL

Pi Delta Theta, Pres. 4; Vice Pres.; Senior Class; Cardinal Key; Velvet Curtain Players; College Theater; Pan Hellenic Representative, 3, 4.

CLARENCE E. STRAUB

Miami U., 1; Dramatics; Stater Staff, 2, 3, 4; Basketball, 2, 3; Football, 3, 4; Baseball, 3, 4; Delta Phi Sigma; Biology Club.

CLARABEL SPACHT

French Club; Y. W. C. A.; Off Campus Women's Club.

HELEN STRUM

Alpha Sigma Alpha, Secretary 3, 4; Off Campus Women's Club, V. P. 3, 4; College Theater; Women's League.

MARTHA M. TAYLOR

Cardinal Key; Commerce Club; Women's League; French Club; Off Campus Women's Club; Pan Hellenic; Phi Alpha Alpha, Pres. 4.

ANNE TESCHER

Chestnut Burr, 2, 3, 4, Editor 4; Kent Stater Staff, 1, 2, 3, 4; Chi Pi, 2, 3, 4, President 4; College Theater, 1, 2, 3, 4; College Social Committee, 2, 3, 4; O. C. W. C., 2, 4.

VIVIAN F. THOMAS

Miami U., 30-33; Delta Delta Delta; K. P. Club.

T. V. UTTERBACK

Alpha Phi Beta, Vice Pres. & Pledgemaster 4; Intra Mural Council (Barbarians), 1; Men's Union Committee, 3; Blue Key, 3, 4.

JEANNETTE VAN FLEET

Pi Delta Theta; K. P. Club; Off Campus Women's Club, 1; Shark Club, 1.

HELEN VAUGHN

Women's League; Phi Alpha Alpha; Commerce Club.

DALE WHITE GIBSON

Kappa Mu Kappa; Blue Key; Alpha Psi Omega; Sigma Delta; Velvet Curtain Players; Dramatics, 1, 2, 3, 4; Orchestra, 1, 2, 3, 4.

LOIS K. WHITELEATHER

College Theater, 1, 2, 3, 4; Alpha Psi Omega, 2, 3, 4, Business Manager 3, 4; Kappa Gamma, 2, 3, 4, Treasurer 4; Women's Debate, 2, 3, 4; German Club, 4.

JOHN H. WILSON

Delta Phi Sigma, Secretary 2; Men's Union, Chairman 2; Football, 2; Chestnut Burr, 1, 2, 3; Athletic Manager, 3, 4; Varsity K, 3, 4.

EARL O. WRIGHT

Delta Phi Sigma, Velvet Curtain Players; College Theater; Commerce Club; Biology Club; History Club; Men's Glee Club, 3; Class Pres., 2; Men's Union; Phys. Ed. Club, 1, 2; Intra-Murals, 1, 2, 3, 4; Track, 2.



Juniors

THE 1934 CHESTNUT BURR



LOUISE ANDERSON

JERRY BAIRD

FRANK BAKER

FLORENCE ANTHONY

ALVIN BAMBERGER

WAYNE BAUMBURGER

DOROTHY BOWERS

CLARK BRADEN

CHESTER BORLET

DALE BOWMAN

RUTH BUELOW

PAUL CALLAHAN

VERA CHAMBERLAIN

FRED BUNDY

KENNETH CARPENTER

THE 1934 CHESTNUT BURY



IRENE CLARK

ALDEEN COX

RAY DILLER

GEORGE COBB

HOWARD DAILEY

LUCILLE FAUGHT

HARRIET FRANKLIN

MARTHA GEORGE

CHARLES FAUSER

KATHERINE GARVIN

JOE GETTRUST

MABEL GRABENSTETTER

ELIZABETH GREEN

JAMES GHENT

MYRA GRAHAM

THE 1934 CHESTNUT BURR



JOHN GRIZINSKI

JUNE HARRISON

JESSIE HINDS

JAMES HAGERDON

BONNIE HART

GEORGE HOBACH

JANET HOLT

MARGARET HUNT

MARTHA HOLBROOK

CLARA HUFF

FRED HUSTON

FRANK JULIAN

ALPHORETTA KIRK

ROBERT JOHNSON

DOROTHY KENTY

THE 1934 CHESTNUT BURR



ROY LANDIS

ELIZABETH MASON

RAY NESBIT

MABEL LAW

HELEN MIKLUS

ALBERT NYE

SADIE ORASCON

IRENE OVERHOLT

ANNETTA OGG

O. E. OTT

WERNER PAUL

EDWIN PFEIL

MABEL PRESSLER

DONALD PECK

ELIZABETH PORTER

CHESTNUT BURR



ROSEMARY PRICE

GERTRUDE QUIRK

JOSEPH REPASKY

GERALDINE QUIMBY

MALVERN RANDELS

INA RICHARD

VIRGINIA ROSCH

LOUAINÉ SCHRAM

RALPH RIDDLE

DOROTHY SABIN

WINIFREDE SCHRAM

WILLIAM SCOTT

IMOGENE SINGER

KENNETH SCOTT

LILLIAN SHIELDS



EARL SKILLICORN

ANN SOFRANEC

ELBERT TOMLINSON

VICTORIA SMOLEN

DOROTHY SWEANY

DON ULRICH

ALYCE WENGER

KENT WIERMAN

MARY JANE WEBER

HALBERT WHITE

MAXWELL WILLIAMS

HAROLD WILLIAMSON

GEORGE WOLFF

RUTH WILLIAMS

ROGER WOLCOTT

THE 1934 CHESTNUT BURR



FRANK BARKER

CHESTER DORNBUSH

EVELYN HAGNE

GORDON CHRUMBACHER ALLAN ENSMINGER

MARY KELLER

GEORGE KLING

RUTH PUFFER

DEAN KISSEBERTH

WAYNE PARDEE

LUELLA SIEGRIST

FREDA STURGELL

HUBERT WANDS

JACK SPENCER

JOE TABORSKY



WALTER WOLFE

LOUISE YOUNG

AL YOUNG

LUCILLE YOUNG

SARA YOUNG

PAULINE YOUNG

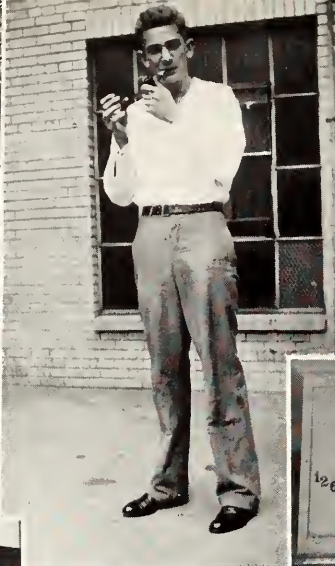
JUNIOR OFFICERS

President Maxwell Williams

Vice President Chester Borlet

Secretary Dorothy Bowers

Treasurer Mabel Law





Sophomores

THE 1934 CHESTNUT BURR



John Alexander	Na Vera Anderson	Raymond Arnett	Dorothy Baldwin
Helen Amer	Howard Andreas	Alden Baker	
Frances Baldwin	Elizabeth Barbe	Kathryn Barker	Ruth Basel
Helen Baldwin	Mary Barclay	Goldie Bartza	
Carl Battenfield	Mary Bell	Dot Binkley	Virginia Boone
Margery Battles	Virginia Betteridge	Robert Bogenrief	
Agnes Bouga	Mathilde Burky	Evelyn Casper	Eileen Cavanaugh
Eleanor Broad	Leota Butler	Donald Cassler	
Treva Chapin	Catherine Clark	Grace Coppersmith	Esther Coursen
Lucile Christen	Dorothy Cole	Josephine Cotman	
Helen Creal	Mary Curry	Vernell Dawson	Catherine Deem
Arlic Cunningham	Anne Czupilo	Frances Day	

THE 1934 CHESTNUT BURN



Helene Denehy	Marion DeWeese	Irwin Duff	Daisy Dunlop
Margaret Dennis	Lucille Dickinson	Eleanor Dunbar	
Bertha DuPont	Pauline Eicher	Edna Evans	Ruth Ewald
Mildred Easton	Anna Elder	Leith Everitt	
Opal Ewell	Doris Faulkner	Herman Fischer	Kathryn Fitzgerald
John Farinacci	Lois Faulkner	Frances Fisk	
Betty Forner	Carol Fredebaugh	Margaret Frock	Lester Furney
Alice Franklin	Reita Frederick	Burdette Frost	
Hubert Gardner	Edward Garrison	Tillie Gaydos	Yolanda Gerbee
Marion Gardner	Mary Gaylord	Dorothy Genuske	
Ernest Gialluca	Harry Gilerest	Bill Gressard	June Gugelman
Margaret Gibala	Opal Goddard	Ruth Gue	

THE 1934 CHESTNUT BURR



Otto Hack	Evelyn Hagne	Laura Hamill	Ruth Harness
Carl Hageman	Helen Hall	Harold Hardy	
Dean Harrah	LaRue Heffelman	Dorothy Hensel	Marian Hess
Helen Hastings	Dorothy Heminger	Hubert Hensel	
Bernard Heuser	Phyllis Hoffman	Nancy Hollister	Irene Hudson
Louise Hiss	Jeanne Hollander	Maxine Horn	
Irene Huffinan	Evelyn Johnson	Glen Jordan	Magdalene Juszli
Victoria Joanta	James Jones	Mary Joyce	
Robert Katzenmeyer	Kathryn Kenreish	Dorothy Ketcham	Kathryn King
Ruth Keck	Marian Kent	Freda Kiedaisch	
Janet Knott	Mary Kwiensky	Clyde Lapp	Sue Lisko
Esther Kuntzman	Esther Laird	Euphemia Lawson	

THE 1934 CHESTNUT BURR



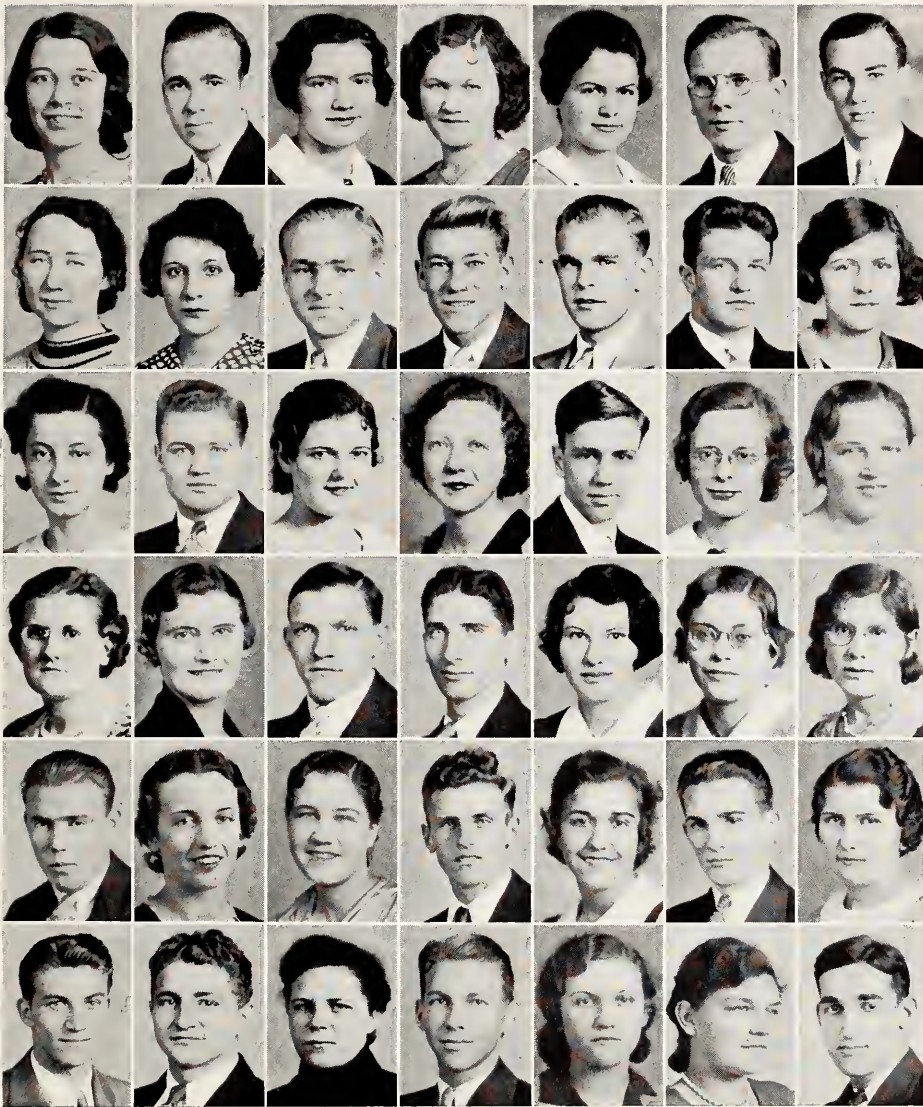
Harry Lohr	Marian Machamer	Marian Maddock	Kay Marks
Helen Lundeen	Ethel Maddock	Evelyn Manley	
Jack Maurer	Myra McElfish	Ruby McHugh	Gullan Melin
Edgar McCormick	Helen McGuigan	Mary McKean	
Ruth Mencer	Mary Miller	Wilmer Munzenmayer	Orletta Oakleaf
Esther Miller	Mary Muir	Alicc Myers	
John Page	Genevieve Parker	Ruth Patterson	Esther Porter
Louine Pardee	Helen Paserbevis	Jane Plumb	
Katherine Pratsch	Anne Ress	Ella Roberts	Elsie Rosenberger
Virginia Raysor	Christine Roberts	Claire Roebble	
Anne Ruddy	Ruth Ruhlmann	Nelson Salathe	Edith Schnell
Sam Rufo	Janette Rutledge	Helen Schaeffer	

THE 1934 CHESTNUT BURR



Berdein Schumacher	Ruth Scott	Mary Scully	Alfred See
Carrie Scott	Mary Scullion	Jane Seager	
Maida Seeley	John Sheron	John Simpson	Margaret Smetts
Dorothy Shaw	Paul Shively	Russell Slutz	
Martha Smith	Aileen Soyles	Flora Sprague	Gladys Stanley
Martha L. Smith	Rosa Sperra	Olive Springborn	
Lucile Stanley	Bernice Stenson	Ruth Stock	Lois Straight
Hazel Starr	John Stetler	Margaret Stoner	
Frank Taborsky	Hazel Tipton	Elisabeth Troeger	Roxane Tullsen
Gertrude Teter	Helen Todut	Loris Troyer	
Richard Tuttle	Aletha VanGuilder	Eleanor Varley	Edna Wade
Ruth Unkefer	Wilson VanVoorhis	Olive Votaw	

THE 1934 CHESTNUT BURR



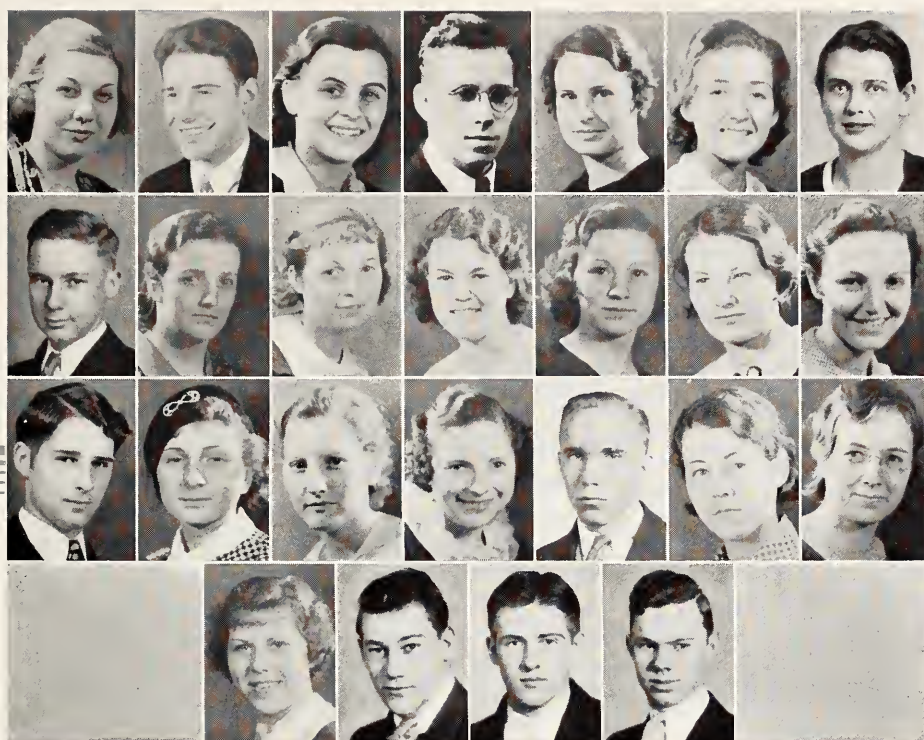
Virginia Aiken	Lucille Arnold	Alta Bancroft	Robert Baumgardner
Glen Andrews	Anna Babinchak	Rex Baughman	
Ruth Beinstein	Arthur Berg	James Bode	Carlotta Case
Carmel Berardi	Murray Bennett	Gerald Brittain	
Ruth Clark	Sally Caldwell	Walter Curtiss	Elizabeth Daskovich
Dewon Clay	Ethel Curry	Leoda Davidson	
Annetta De Vore	Clarence Eckert	Eleanor Fear	Thelma Fritz
Ruth Donahue	Robert Eisel	Charlotte Frazier	
Edward Fuller	Miriam Gruen	Doris Hahlen	Velma Honder
Corrine Gainer	John Gruszecki	Robert Hall	
Frank Hovey	Elizabeth James	Vivian Jones	John Kalkas
Lawrence Huber	Herman Jones	Alice Juringus	

1934 CHESTNUT BURR



Leo Lutz	Mary Manos	Amelia Matejka	John McCort	Jay Miller	Peter Nepodal	Roger Nickerson
Wilbur Pardee	Isabelle Parker	David Pearson	Mildred Peterson	Gerald Read	Howard Retzler	Royal Reynolds
Arthur Ruggles	Martha Shotsinger	Ralph Slates	Dale Smith	Jane Smith	Wendell Stribley	Harold Stull
Elsie Swan	Grace Titterington	Clifford Tyler	Harold Vaughn	Hazel Walker	Wayne Wallace	Arietta Walsh
Sue Wampler	Naudine Waters	Neva Watkins	Velma Watson	Peter Wawrin	Mary Weier	Melva Weimer
Harold Wendelken	Jane Werden	Ottomar Weyer	Bennett White	Ruth Whittlesey	Paxton Whitmire	Mary Whitely

THE 1934 CHESTNUT BURR



Ruth Wiant	Alice Wilcox	Nellie Williams	Virginia Williams
LeRoy Widowski	James Wilder	Dorothy Williamson	
Paul Wise	Margere Wiswell	Lucille Workman	Lucille Wright
Winifred Wise	Benlah Woodford	Frances Woy	
Paul Wyles	Mary Young	Stephen Zboray	Lois Zurcher
Helen Yelichek	Ann Zepko	Helen Zurcher	
Mabel Zurcher	Don Cassler		
Murry Bennett	Dean Weichman		

Class Officers

SOPHOMORE DEGREE

President LeRoy Widowski
Vice President Bill DeWeese
Secretary Alta Bancroft
Treasurer Jeanne Hollander

SOPHOMORE DIPLOMA

President Sue Wampler
Vice President Anne Ress
Secretary Berdein Schumaker
Treasurer Ruth Basel

Youngstown Club

The Youngstown-Kent club was organized to develop friendship among the Youngstown students enrolled at Kent, and through mutual associations at meetings and social events to boost the college.

Executives are:

<i>President</i>	Lawrence Vagnozzi
<i>Vice President</i>	John Ryznar
<i>Secretary</i>	Virginia Harpman
<i>Treasurer</i>	Frank Julian
<i>Social Chairman</i>	Helen Backus
<i>Publicity</i>	Jane Seager

Canton Club

The Canton club was organized for the purpose of serving as a connecting link between the city of Canton and Kent State College. Various social functions were held during the year in Kent and at Canton.

Officers are:

<i>President</i>	Malvern W. Randels
<i>Vice President</i>	Don Cassler
<i>Secretary</i>	Paul Schear
<i>Treasurer</i>	Jane Ungashick
<i>Faculty Advisor</i>	Prof. S. A. Harbourt

Cleveland Club

Membership in the Cleveland club is open to all students who live in Greater Cleveland or who were graduated from a Greater Cleveland high school. The group has a two-fold purpose: to bring more Cleveland students to Kent State and to sponsor social functions in Cleveland during vacations.

Officers are:

<i>President</i>	Rosemary C. Price
<i>Vice President</i>	John Sheron
<i>Secretary</i>	Irene Clark
<i>Treasurer</i>	Frances Lothrop
<i>Social Chairman</i>	Charles Glatzer

Beta Zeta

Beta Zeta was organized in May 1933. Its purpose is the promoting of interest and encouragement of research in Biological Science. Bi-monthly meetings are held at which lectures on special projects are given by the students.

Officers are:

<i>President</i>	Seymour J. Fear
<i>Secretary</i>	Vesta Donaldson
<i>Treasurer</i>	Jack Spencer



Freshmen



COLLEGE OF EDUCATION

Angelo, Philip Michael
 Baldwin, Frances
 Banfield, Henrietta
 Beinstein, Ruth
 Benning, Leora Marie
 Bianchi, Anne
 Bowers, Mildred Eileen
 Branchik, Michael
 Brannon, Mary Esther
 Briola, Harold Daniel
 Broad, Margaret
 Buck, Ruth
 Buckmaster, Jayne E.
 Buell, Charlene
 Bunphrey, Elizabeth J.
 Burke, Roy Oral
 Bush, Frances Sabia
 Caldwell, Evelyn R.
 Catlin, Madeline E.
 Chappellear, Paul F.
 Chrispell, Eleanor
 Cipra, Virginia Marie
 Cooper, Robert
 Curtis, Walter M.
 Damann, Kenneth E.
 Dankov, Pete
 Danforth, Helen Grace
 DeFazio, Virginia Marie
 DeSimio, Isabelle Marie
 Dunlavy, Howard
 Ebic, Lillian Pauline
 Ellery, Shirley Dorthea
 Elliott, Bernita May
 Eynon, Mrs. Jennie

Falls, Clare
 Faloon, Eleanor Jean
 Fitzgerald, Dorothy L.
 Foley, Marguerite R.
 Foss, Robert Irving
 Frank, Mary Lillian
 Gamauf, William
 Gennett, Arthur Joseph
 Gifford, Herbert E.
 Gilly, Victor Robert
 Gingery, Stanley W.
 Godfrey, Albert H., Jr.
 Grader, Kenneth W.
 Hague, Eva Muriel
 Hall, Anna Elizabeth
 Harrington, William B.
 Helmboldt, William H.
 Hess, Marion Carol
 Holmes, George Edwin
 Horlak, Michael
 Horn, Jean Florence
 Houser, Catherine M.
 Huge, Karl August
 Jacolonne, Adelina C.
 Kane, Hugh
 Kasha, Joseph Sos
 Kegler, Edward Francis
 Kerka, Joseph James
 Korb, Eugene Barth
 Kunert, Betty K.
 Longcoy, Mabelle Ada
 Lothrop, Frances C.
 Lowry, Martha Jane
 Ludt, Silas

Luikart, Dorothy L.
 McAlister, Wilbur Atlee
 McGrath, Harriett
 McLaughlin, Mary Jane
 McSorley, Jane Agnes
 Maines, George J.
 Malone, Anna Mae
 Malpass, Edith L.
 Markley, Ethel Althea
 Miller, Bernice Virginia
 Miller, Laura Anne
 Miller, Robert George
 Moore, Frances Jeanette
 Moore, LaVerne C.
 Moore, Willard
 Morrell, Ruth Louise
 Mosher, Francis
 Myers, Everett W.
 Neal, Richard
 Nees, Josephine
 Noble, Marion
 Osborne, Marjorie E.
 Oviatt, Ruth Viola
 Pacinch (Page), Joe A.
 Palmer, Winifred A.
 Parmigian, Ralph Steve
 Peet, Jane Elizabeth
 Peil, Janet Ann
 Pfingsgraff, Mary
 Ratzenberger, Margaret
 Rehm, Walter A.
 Richards, Eileen Martha
 Rogers, James Douglas
 Ross, Leda

Rueth, Zita Marie
 St. John, Eileen Asthore
 Sanner, Nolan James
 Savory, William
 Scharf, John Ernest
 Scott, Johny Fulton
 Shank, Eugene Leon
 Shaw, Dorothy Lucille
 Sheffield, Vernon Lee
 Shuman, Effie Lenore
 Simpson, Bruce Harold
 Smith, Harry William
 Smith, Marie
 Spelman, Marian E.
 Spicer, Doris Jane
 Spitz, Alice
 Stadler, Rita Mary
 Stambaugh, Marie K.
 Stoner, Margaret
 Stull, Harold Forest
 Swan, Ada Alice
 Thomas, Kathryn
 Towne, Marion Ethel
 Troeger, Elisabeth W.
 Truscott, Ella
 Ungashick, Jane Alice
 Urban, George
 Villella, James Eugene
 Wardell, John William
 Watkins, Virgil
 Weyer, Phyllis May
 White, Bennett
 Wood, Mary Isabelle
 Woods, Jeanette Louise
 Young, Dorothy



COLLEGE OF LIBERAL ARTS

Alexander, Kenneth S.
 Allen, George William
 Alvarez, Evaline
 Anderson, William K.
 Ault, William
 Austin, Hilda Dorothy
 Bader, Eleanor Leona
 Banka, Mae Strong
 Barlow, Donald Charles
 Battenfeld, Carl Frank
 Baughman, Rex Samuel
 Benedict, Ruth Lenore
 Benson, Nelson Maurice
 Benkeman, Robert A.
 Biasella, Aurora Madia
 Bierce, Marjorie
 Black, Freddie
 Black, Otis Dietz
 Blosser, Margaret Alice
 Bly, Alton
 Bode, James Henry
 Bolich, Richard Owen
 Boyich, Paul Robert
 Brietenstein, Sam
 Brittain, Gerald F.
 Broadbent, Todd
 Brunner, Ruth Marie
 Butler, Robert Perry
 Call, Arthur Malcolm
 Cameron, Ralph Willard
 Capel, LaVerda Ethel
 Carter, Norvin P.
 Clark, Barbara
 Clark, Elizabeth Esta
 Clemmer, Carl Andrew

Colby, Mary Margaret
 Collier, Helen Margaret
 Corin, Joseph
 Cook, Howard Leigh
 Copeland, Claer Ernest
 Corl, Morris
 Crabbs, Thurman
 Craig, James Russell
 Critz, Jone Paul
 Daugherty, Lola Gladys
 Davis, Robert Selwyn
 Deeds, John Edwin
 DeFulio, Juilio Gerald
 Dick, Mildred Pauline
 Dyke, Ralph Edgar
 Eckert, Wilford R.
 Eddy, Laura Elizabeth
 Elsaesser, Carolyn A.
 Ensminger, Kathryn E.
 Ettinger, Shirley Vail
 Ferrara, George
 Fielding, Olive
 Fouser, David Franklin
 Foust, Willard Clarence
 Frost, John Burdette
 Galati, Francis Vincent
 Garrison, Edward E.
 Gettrust, Mary Frances
 Getz, William H.
 Goodell, Edgar
 Gorham, Lewis Atwood
 Griffin, Donald Hane
 Griffin, Richard Wilmer
 Grobe, Harold
 Guise, Newton Cornelius

Hansen, Richard Parker
 Harrington, Harriet M.
 Harrington, Myron E.
 Harris, Earl Norris
 Hastings, Margaret J.
 Hedeman, Lincoln Park
 Hollister, Gerald Allan
 Horton, Robert Lumley
 Hovey, Frank Thomas
 Howard, Claud Reed
 Howard, Marian J.
 Hunn, Sarah Elizabeth
 Janda, Wilbur James
 Klein, Ruth Naomi
 Knapp, Harry Conrad
 Laver, Jeanette
 Leffingwell, Mary E.
 Little, Warren Tousley
 Lloyd, Malcolm
 Lodge, George Frederick
 Lutz, Gilbert Parkhurst
 McCormick, William G.
 McGrew, Chester
 McKinley, James E.
 Mancovitz, Abe
 Mattison, Helen Beatrice
 Maurer, John Fox
 Meech, Florence Luna
 Merriek, Ruth
 Miller, Doris Maxine
 Moran, Raymond
 Morse, Joe Wilson
 Mosher, Frances Eugene
 Mowery, William E.
 Moyer, Jean Louise

Musshelman, Allyne Joyce
 Nelson, Andre Harry
 Nickum, Don John
 Norris, Charles Richard
 Oberlin, Robert
 Oliver, Mary Louise
 Palfi, Margaret Yvonne
 Parker, Paul Oliver
 Pender, Gladys Mary
 Pyson, Marian Agnes
 Ranney, Don Edward
 Redinger, Grant S.
 Ritchie, Frank Lee
 Ruff, William Louis
 Scheck, Robert
 Schieber, Irene Faye
 Schneider, Edward W.
 Sehroyer, Doris Jildean
 Seobie, James Barrett
 Season, Gerald
 See, Alfred Clyde
 Shearer, Howard E.
 Shook, Howard Denman
 Siddall, Don Frank
 Simon, William
 Simpson, John Bartshe
 Slates, Ralph David
 Smith, Dale Burnette
 Smith, Lawrence
 Smith, William John
 Sokoloski, Chester Peter
 Specht, Mary Louise
 Spencer, Garner Arthur
 Spencer, Mary Ellen
 Stein, Averal Lawrence



Stewart, Mary Jane
Stopher, Margaret Mary
Swan, Mae Jeanne
Swedish, Frank
Swinehart, Merle Robert
Thomas, Reg
Thomas, Talbott, E., Jr.

Thomas, Tyler
Thompson, Martha Helen
Vagnozzi, Lawrence
VanOster, Wilma J.
Vaughan, Lewis H.
Weir, Donald LaMar
Weldin, Walter

White, John Robert
Whittlesey, Margaret M.
Wilenius, Wilfred
Willett, Emily
Williams, Ervin Ray
Williams, Kenneth B.
Williams, Loren Emerson

Wilson, Robert M.
Winemiller, Frederick
Wolfe, Rosalie Esther
Woods, Mary Jane
Wright, Danny
Wright, Joseph W.
Young, Billy Hayne
Zupan, John Earl

COLLEGE OF EDUCATION

Ackeret, Drew
Adams, Grace
Adlard, Katherine
Ailes, Dorothy May
Amer, Helen Mae
Amstutz, Grace Irene
Babinchak, Anna E.
Backus, Helen
Baker, Margery
Baumberger, Bernice M.
Beach, Catherine Alice
Beardsley, Gladys Lucile
Beeboud, Mary Margaret
Behrend, Adelaide F.
Bell, Charlotte Alberta
Berardi, Carmel
Biehl, George Henry
Biery, Pauline Elizabeth
Binkley, Dot Arlene
Blazek, Anna Helen
Bliss, Ethel LaVerne
Bostwick, Barbara Jean
Bovard, Elizabeth F.
Brobst, William E.
Brogan, Betty Jane
Brown, Doloris
Brown, Madalyn

Brown, Ruth Evelyn
Bryan, Graydon Reid
Burchard, Marion Louise
Burford, Lillian Marian
Burky, Matilde
Carver, Glen Sproul
Casper, Doris Ann
Clark, Nellie Mae
Closser, Joseph Elviro
Cochran, Thelma Ellen
Coggins, Marjorie Mae
Cook, Mary
Cooper, Genevieve Carol
Coopersmith, Helen
Conrath, Florence
Crabtree, Dorothy
Croskey, Helen Louise
Crozier, Marjorie Louise
Custer, Betty Ann
Dawson, Jeanette
DePascale, Yolanda R.
DeVore, Annretta Rose
Diday, Mary Emily
Diday, Nellie Pauline
Diehl, Marguerite F.
Diehm, Ruth Martha
Diver, Dorothy Dale

Drabek, Irene Agnes
Dubetz, Mildred M.
Duckworth, Nina Ruth
Dunn, Mary Louise
Duvall, Wilma A.
Dykens, Gwendolyn
Earl, Florence
Ebie, Beulah Marie
Edie, John George
Ellinwood, Alice L.
Endlich, Inez
Erb, Avanel
Eyster, Mildred Rose
Ferrari, Jennie Mae
Fiedler, Lillian Pearl
Fisher, Sheldon Clay
Fontana, Celeste Michael
Force, Leon Silas
Fortier, Martha Zuber
Fox, Jacolyn
Funk, Helen Esther
Gates, Rebecca Jean
Geer, Jane
Geer, Janice
Geletka, Anna
Giannetto, Rose Ann
Girard, Arlene

Gogesch, Mathilda
Gottschalt, Lillian S.
Grant, Helen Evelyn
Gray, Ethel Loretta
Greeneisen, Lucille K.
Grosjean, Mildred Alice
Haines, Mae Genevieve
Hall, Margaret Eileen
Hamrock, Aloysius T.
Harlan, Ethel Mae
Harpman, Virginia C.
Harrison, Adeline B.
Harrison, William E.
Harsh, Lillian Nereva
Hawk, Edith May
Hawkins, Beatrice L.
Hays, Mary Luella
Heber, Paynella Mae
Helling, Harry Lee
Helm, Victor
Helmreich, Audrey R.
Henderson, Mabel Marie
Henry, Wanetta
Hoffman, Mildred F.
Hollander, Maryellen
Horst, Esther Olivia
Hosmer, Stella Gene



House, Elizabeth Ann
Housley, Charlyn D.
Isler, Elizabeth Anne
Johnson, Josephine E.
Jones, Ardis
Jones, Edith Mae
Jones, Ethel Lisle
Jones, Ruth Caroline
Kalfus, Rosalie
Kasper, Winona Jean
Kauffman, Velma B.
Kearns, Joseph F.
Kellogg, Ruth Myrtle
Kennedy, Helen E.
Kishton, Stella
Klingensmith, Virginia B.
Kramer, Bernadette G.
Kroek, Margaret E.
Ladrach, Arlene Rosina
Leggett Kathryn Vecele
Lewis, Isabel Boyd
Lichti, Frances Roberta
Lilie, Jean Elizabeth
Luke, Blanche LaVon
McConnell, Dorothy I.
McConnell, Mary Anna
McDowel, Lois J.
McElfish, Myra E.
Machamer, Marian A.
Magee, Melvin
Manzo, Carolyn Alice

Markley, Treva Ilene
Marks, Glea Arline
Maxwell, Doyle Beeghly
Merton, Dorothy
Messerly, Susan
Messersmith, Lillebelle
Miller, Lois Maxine
Mitten, Helen Elizabeth
Mizer, Verna Mae
Moffo, Carmela
Moon, Mary Elizabeth
Morse, Guyanetta K.
Mosley, Louise Eleanor
Mross, Eva Catherine
Murray, Dorothy Anne
Myers, Dorothy Dolletta
Novasad, Helen Carol
Nuzum, Joe Wallace
Nuzum, Isabel Ollie
Olinger, Justine Leland
Opre, Wilma Mae
Osborne, Lucile
Palmer, Catherine E.
Patterson, Helen E.
Paul, Alice Jane
Powell, Berdine Avis
Prysock, Wilma Elaine
Quirk, Elizabeth B.
Richardson, Betty H.
Richmond, Evelyn Anola
Ringer, Ora

Ringheimer, Geraldine M.
Roberto, Filomena
Rodgers, Leona Mae
Rogers, Vivian Juliann
Romp, Margaret Alice
Room, Eunice Margaret
Rowe, Irene Fern
Rudolph, Anabelle
Russell, Janet Louise
Saker, Edna
Sauerbrey, Paul A.
Saulter, Virginia Grace
Schaffter, Helen M.
Schmidt, Theron Wayne
Schnurrenberger, Jean
Schott, Eleanor K.
Schwarz, Olive Catherine
Seleski, Martha Jane
Sells, Leta May
Sherer, Annabelle
Simcox, Dorothy Mae
Simons, Bertha Elizabeth
Sist, Helen Lydia
Smith, Grace Arzella
Sonnhalter, Eulalia C.
Staley, Dorothy Irene
Stallsmith, Daisy M.
Starkey, Mildred F.
Streine, Elizabeth W.
Studer, Freda Louise
Summer, Velma Gay

Taggart, Ruth
Ternasky, Mary
Thompson, Charles E.
Thompson, Sarah Mae
Tkacs, Elizabeth Jane
Todut, Helen
Toth, Margarette R.
Traut, Dorothy Jean
Van Voorhis, Wilson H.
Waldron, Sally M.
Watkins, Twila
Weaver, Eleanor
Weible, Alice
Wells, Helen Mae
Wenger, Sylvia
Whetson, Vivian Olive
Whiteleather, Alice
Whiteleather, Martha
Whiteleather, Ruby
Williams, Cora Belle
Wilson, Emma
Woodford, Beulah
Woolf, Lucille Ann
Yoder, Virgil W.
Zehner, Lavonne
Zella, Anne
Zeller, Alice E.
Zeller, Dorothy Sophie
Zimmer, Mary Helen
Zorger, Jeannette
Zurcher, Lloyd

FROSH. DEGREE

John Zupan Margaret Stopher
John Scharf Mildred Bowers

Class Officers

FROSH. DIPLOMA

Carolyn Manzo Betty Leffingwell
Barbara Bostwick Kathryn Leggett





Organizations





Student Administrations



Student Council

The Student Council is composed of twelve members, selected from each class. The dean of men and the dean of women act as advisors. New members are selected by recommendation of the official council to the faculty. The function of this body is the settling of student problems and the furthering of student spirit. Officers are: Blaine Conley, president; Walter Seifert, vice president; Maxwell Williams, secretary.



College Social Committee

The members of the faculty social committee, appointed by the president, together with a large number of students representing the various organizations, and their faculty advisors, form the membership of the College Social Committee. The chief work of this committee is to arrange for dates on the social calendar, and to oversee the general arrangements for all social functions.

Inter-Fraternity Council



The Inter-Fraternity Council was founded in the fall of 1931. The purpose of this organization is to act as a governing body for all the Greek letter social fraternities in their relations with one another. The membership consists of the president and one other member from each social fraternity.

Officers are: Al Losito, president, and Lower Kellogg, secretary. Members are Al Young, Harold Law, Joe Carl, Russell Cover, Jay Miller, Pete Cipriano, Tony Schopfer and Maxwell Williams.

THE 1934 CHESTNUT BURR

Pan-Hellenic Association



The Pan Hellenic association is an organization of the national educational and local sororities on the campus. Each sorority sends its advisor, president and two members as representatives to a meeting held once a month. Any problems concerning rushing dates, rules or parties may be brought before this group for discussion and settlement.



Women's League

The Women's League, of which every woman student is a member, is the largest organization on the campus. Its purpose is the promoting of matters of student life pertaining to the women of the college. The League sponsors the Big and Little Sister Teas, and the Sunset Dances. The officers for this year are president, Martha Ann Holbrook; vice president, Lucille Osborne; secretary, Dorothy Kenty; treasurer, Marian Spellman.



Men's Union

The Men's Union is an organization in which every man upon enrolling in the college automatically becomes a member.

The purpose of the Men's Union is to provide a better acquaintance among men students. Banquets, smokers, and contests of all sorts ranging from literary to athletic contests are sponsored annually as men's activities by the Men's Union.

Dean R. E. Manchester is the director of the Men's Union, and Jay Miller is the director of men's activities.



Publications



BURYL F. ENGLEMAN
Advisor



WALTER SEIFERT
Editor

The Kent Stater

Weekly Publication of Kent State College

The Kent Stater is published each week throughout the summer and winter sessions of the school year by a staff selected by the editor and faculty advisor.

The editor and assistant editor are appointed each year by the Faculty Committee on Publications, and receive as compensation free tuition and a small salary.

A large staff of journalism students and experienced reporters works under direction of the editor. Professor Buryl F. Engleman is advisor to the newspaper and Head of the Department of Journalism and Publicity, besides serving as Chairman of the Faculty Committee on Publications.

EDITORIAL STAFF

Walter W. Seifert	<i>Editor</i>
Robert L. Baumgardner	<i>Assistant Editor</i>
Alvin S. Bamberger	<i>Sports Editor</i>
Alice Wilcox	<i>Society Editor</i>

The Kent Stater Staff



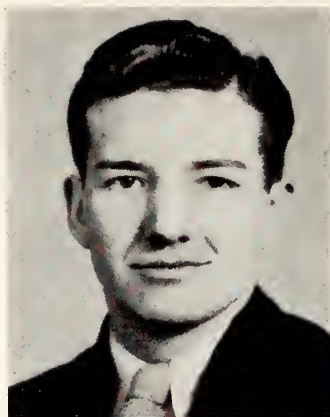
THE 1934 CHESTNUT BURR

REPORTORIAL STAFF

C. Battenfeld	H. Fischer	J. Moyer
M. Battles	R. Flanders	J. Page
M. Blosser	L. Furney	R. Peebles
D. Bowers	L. Galloway	R. Price
D. Brown	R. Hall	M. Rush
E. Clark	K. Hissner	L. Sause
I. Clark	P. Hoffman	J. Seager
W. Celestino	E. Julius	I. Singer
C. Cochran	R. Katzenmeyer	K. Scott
R. Collier	R. Klien	D. Smith
B. Conley	K. Kenney	J. Smith
J. Craig	W. Langell	E. Stiles
W. Curtis	M. Maddock	A. Tescher
J. De Eulis	G. Melin	G. Urban
C. Dornbusch	E. Miller	D. Watkins
M. J. Fairchild	J. Miller	L. Whiteleather
L. Faught	R. Miller	D. Weichman
W. Few		M. Williams



ANNE TESCHER
Editor



WILLIAM LANGELL
Business Manager

The 1934 Chestnut Burr

Annual Publication of Kent State College

EDITORIAL STAFF

Anne Tescher	Editor-in-chief
Rosemary Price	Assistant
Jay Miller	Features
Helen Schaeffer	Organizations
Peg Rush	Sororities
Don Peck	Fraternities and Art
Harry Kirk	Snapshots
Vera Chamberlain	Secretary
Bob Miller	Sports

The Chestnut Burr Staff

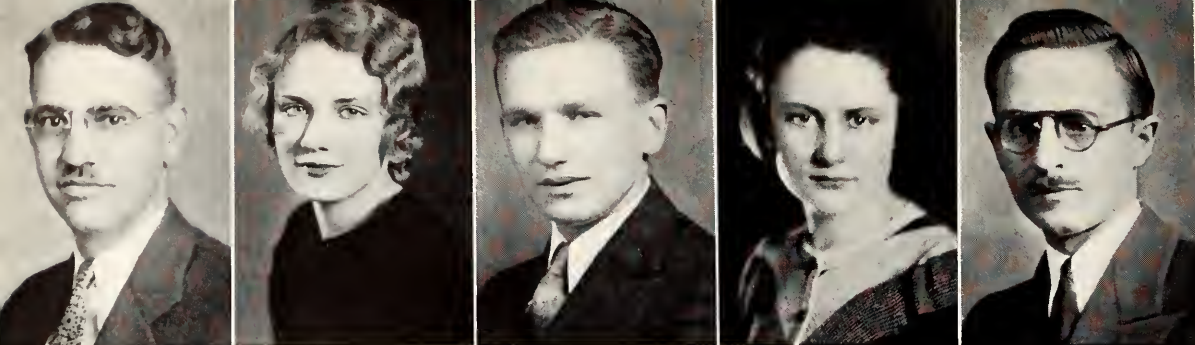


THE 1934 CHESTNUT BURR

THE CHESTNUT BURR BUSINESS STAFF

William Langell	<i>Business Manager</i>
Alvin Bamberger	<i>Assistant Business Manager</i>
Don Ulrich	<i>Circulation Manager</i>
Harold Briola	<i>Assistant Circulation Manager</i>
John Wilson	<i>Advertising Manager</i>
Glenn Andrews	<i>Assistant Advertising Manager</i>
Glenn Jordan	<i>Sales Manager</i>
Eugene Korb	<i>Assistant Sales Manager</i>
Lester Furney	<i>Publicity Manager</i>
Billie Streine	<i>Assistant Publicity Manager</i>
Elizabeth Bumphrey	<i>Secretary</i>

The Chestnut Burr is published annually by Kent State College. The editor and business manager as well as the assistants are appointed each year by the Faculty Committee on Publications.



Chi Pi

Chi Pi, honorary journalistic fraternity, is one of the oldest honorary fraternities at Kent. Students elected to it must have completed their sophomore year and have done meritorious work on either of the student publications for at least two years.

Officers are:

<i>President</i>	Anne Tescher
<i>Vice President</i>	Rosemary Price
<i>Secretary-treasurer</i>	Charles Demian

Other members include: Marjory Russell, Robert Peebles, Adeline Wilcox, Marcella Rush, and Jane Seager.

Professors Eric T. Griebing and Buryl F. Engleman are honorary members.

Writers' Club

The Writers' Club of Kent is an organization made up of students and others who enjoy writing. Meetings are held each month and all contributions are on assigned topics. A mimeographed record is kept of all material presented. No permanent officers are elected but a chairman is appointed for each meeting.



Dramatics and Debate



Theatre
Officers

The Kent State College Theater since its inception four years ago has grown tremendously. Professor E. Turner Stump, director, supervises the College Theatre and draws upon its membership for his play casts and technical staffs. The student manager presides over the theatre meetings, appoints the department heads and sees that the various departments function.

Officers of the theatre are: Albert Shambarger, manager; Dave Watkins, assistant manager; Frieda Beymer, secretary; and Max Williams, treasurer.



Alpha
Psi
Omega

As a reward for outstanding work in dramatics, membership is granted to the national honorary dramatic fraternity, Alpha Psi Omega. Two minor honoraries leading up to Alpha Psi Omega, are the Freshman Players and the Velvet Curtain Players.

College Theatre Productions

BERKLEY SQUARE

LEADS

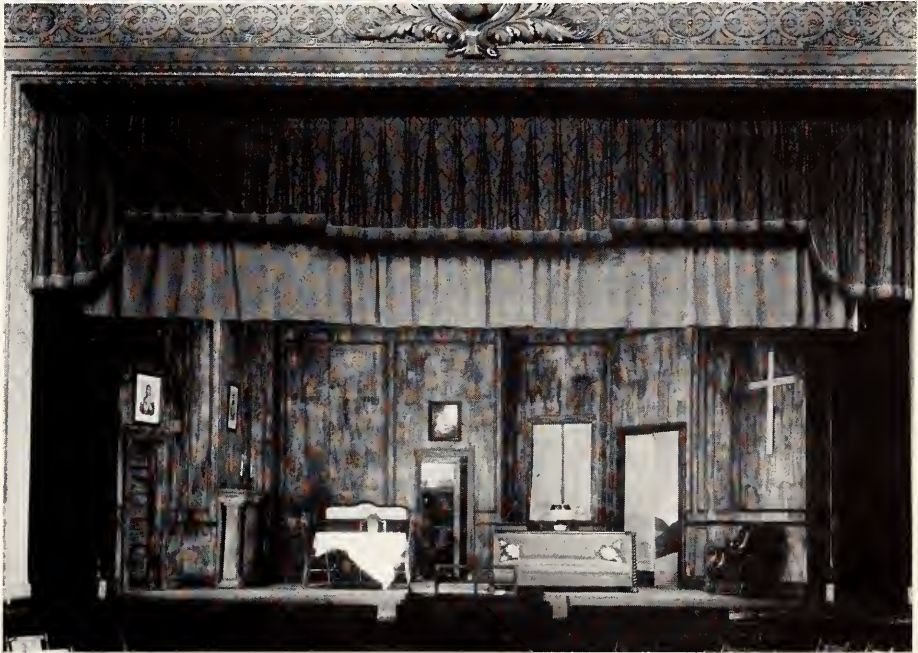
Don Parkinson
Virginia Cipra
Eunice Hines



SERVANT IN THE HOUSE

LEADS

John Page
Albert Shambarger
Virginia Betteridge
Eunice Room



THE LAST WARNING

LEADS

Albert Shambarger
Eunice Hines
John Converse
Helen Genuske

E. TURNER STUMP



HAY FEVER



Women's Debate

One of the outstanding events in the year for the debating team was the winning of nine out of ten debates at the tournament held in Toledo. The affirmative team was composed of Josephine Cotman and Lucille Arnold and the negative of Flora J. Sprague and Lois Whiteleather. The question was on increased powers. However, the greatest achievement was the winning of the Ohio Conference championship for the second time. The teams participated in four debates and lost none, defeating Wittenberg, Capital U., Ohio U., and Ohio Northern. The affirmative was upheld by Sara Hum, Hilda Austin, and Flora J. Sprague and the negative by Lucille Arnold, Josephine Cotman, and Lois Whiteleather. The question was Resolved: That Capital Punishment should be Abolished.

Kappa Gamma

The Alpha chapter of Kappa Gamma was organized at Kent in 1932 by E. Turner Stump, the national president. The purpose of this honorary fraternity is to arouse and further interest in the progress of inter-collegiate competition in the forensic arts.

Men's Debate



THE 1934 CHESTNUT BURR

The men's debate squad was composed of the following: Maxwell Williams, Fred Bundy, Harold Law, Jack Sharon, John Page, Hubert Hensel, William McCormick, Robert Wilson, Wayne Wallace, Edward Schneider, William Smith, and Raymond Moran. These men participated in debates with Baldwin Wallace, Hiram, Case, John Carroll, Akron, Wittenberg, Ohio U., Bowling Green, St. Francis, Grove City, Western Reserve, Geneva, Toledo and Fenn.

Eight of these debates were non-decision debates, while the Kent teams won thirteen and lost seven of the contests. The questions debated were: Resolved: that the powers of the president should be substantially increased as a settled policy; and Resolved: that a presidential dictator would be preferable to our congressional form of government. B. F. Engleman coached the debate teams.

B. F. ENGLEMAN
Debate Coach





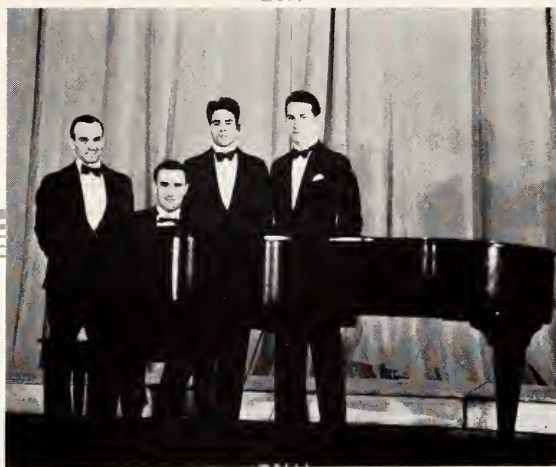
Blue Key

Blue Key fraternity is a national organization open to men students of junior or senior standing who have distinguished themselves in various campus activities. The purpose of this group is to study, discuss and further the best interests of Kent State college. Officers are: Harold Law, president; Seymour Fear, vice president; Harold Gear, recording secretary; John Ryznar, treasurer; and Chester Borlet, corresponding secretary.



Cardinal Key

Cardinal Key is a national honor society for women. Its members are chosen for outstanding leadership, scholarship, and character. The Kent State chapter was founded December 13, 1933. Charter members were Helen Hoffman, president; Mary Jane Fairchild, Lucille Galloway, Vera Cochran, Margaret Acken, Jessie Hinds, Eunice Hinds, Mabel Law, Marcella Rush, Pauline Stonehill, Victoria Smolen, Marthe Taylor, Martha Holbrook and Mary Jane Weber. Miss Gwendolyn Drew is faculty advisor and Dean Verder an honorary member.



Music



Men's Glee Club

The Men's Glee Club is a selected group of men who enjoy singing. Try-outs are held at the beginning of each semester. Several programs are given throughout the year and occasional concert trips are made and broadcasts given. The annual concert this year was given March 12, in the College Auditorium.

President Robert Bogenrief
Bus. Mgr. and Treas. . . . Paul Strahl
Librarian Loris Troyer
Accompanist . . . Charles Thompson
Director Fred H. Denker



Band

Snappy uniforms and a well-trained drum major helped the band to present a striking appearance at football and basketball games. The band under the direction of Professor Roy Metcalf did much to bolster the spirit at various college games and contests.

The College Choir



The personnel is as follows:

Phyllis Weyer, Evelyn Dick, Mary Harding, Evelyn Richmond, Helen McClaflin, Leota Butler, Grace Smith, Leora Benning, Isabelle Lewis.

Geraldine Quimby, Adelaide Behrend, Louise Anderson, Harold Gear, Forest Hawk, Ottmar Weyer, Royal Reynolds, Neva Watkins, Elsie Swan, Aldeen Cox.

Ruth Unkefer, Ruth Wiant, Earl Thomas, Paul Strahl, Willis Lipscomb, Werner Paul, William Helmboldt, Robert Bogenrief, Janet Jones, Marian Howard. Director, Helen McClaflin.

THE 1934 CHESTNUT BURR

Orchestra and Chorus



The girls' glee club under the direction of Miss Elfreda Littlejohn gave two concerts this year. Officers for the 1933-34 season were: Evelyn Dick, president; Ina Richard, vice president; Louise Anderson, secretary; and Dorothy Ketcham, librarian.

The college orchestra under the direction of Mr. Metcalf played at various entertainments and programs.

Madrigal Club

Madrigal Club was organized in October, 1931 for the purpose of studying and enjoying English Madrigals. These songs date back to the seventeenth century. The club is a purely honorary organization.

Members: Sopranos: 1 Evelyn Dick, Arlene Palmer; 2 Ruth Unkefer, Elizabeth Isler.

Altos: Grace Smith, Aldeen Cox.

Tenors: Loris Troyer, Harold Gear.

Basses: Werner Paul, James Wilder.

OFFICERS

President Aldeen Cox

Vice President Evelyn Dick

Secretary Loris Troyer

Director and Advisor Miss Elfreda Littlejohn

Music Club

Music Club was organized for the purpose of unifying music majors and minors. Its activities for the year include student recitals closed and public, club programs, and social affairs.

OFFICERS

Aldeen Cox *President*

Mildred Heinemann *Vice President*

Geraldine Quimby *Secretary-Treasurer*

John Farinacci *Program*

Advisors: Miss Florence Sublette, Miss Helen McClafflin, Miss Elfreda Littlejohn and Mr. Fred H. Denker

Male Quartet

First Tenor Harold Gear

Second Tenor Forest Hawk

First Bass Paul Strahl

Second Bass Fred Bundy

The College Male Quartet is a valuable asset to the musical life of the college and of surrounding communities. This year it has appeared on numerous occasions, assisting also on the Men's Glee Club Concert, March 12. Reorganization of the quartet was necessary the second semester because of the illness of one of its members.



Clubs



Barbarians

The officers of the Barbarians are: Marion Gardner, president; Herman Jones, vice president and business manager; Howard Andreas, secretary and treasurer; Frank Taborsky, athletic director. Other members are: Ackeret, Anderson, Baird, Beil, Borsic, Braden, Brobst, Chappellear, Critten, Diller, Dalrymple, Eckert, Everitt, Force, Gamauf, Hall, Harrah, Harrison, Helling, Hugo, LaRocco, Moffett, Maines, Moswell, McAlister, McCuskey, Nye, Ott, Rehin, Ryzner, Schmidt, Slutz, Stull, Swinchart, Van Vooches, Vaughn, Williams, Wolcott, Wolff.



Biology Club

The Biology club was organized in 1928. Meetings are held every two weeks, at which time prominent biologists speak. Field trips, steak roasts, annual banquets, and laboratory dinners are also included in the yearly program. Membership is drawn from majors and minors in the department of biology. Officers are: Ray Nesbit, president; Charles Poole, vice president; Goldie Hasler, secretary; Don Alderman, treasurer; advisor, H. A. Cunningham.

Commerce Club



The object of this organization is to promote the best interests of the Department of Commerce of Kent State College.

The officers of the club are: Jack Sheron, president; Donald Terrill, vice president; Marcella Rush, secretary; Donald Ripley, treasurer; and Carl Falls, business manager. Dorothy Baldwin, Earl Wright, Kenneth Teeters, Leo Lutz and Jeanne Hollander comprise the Board of Governors. Dr. Magee, head of the commercial department, is the faculty advisor.

THE 1934 CHESTNUT BURR

German Club



The German club **UNTER UNS** features folk songs, plays, reports and illustrated lectures at the meetings, to increase the members' knowledge of the German language. Officers for the year were: Bernard Heuser, president; Victoria Smolen, vice president; Ella Roberts, secretary; Lois Whiteleather, reporter, and Dr. Schafheitlin, advisor.



Home Economics Club

The membership of this club is taken from the majors and minors of this department. The club maintains the Home Economics Practice House, and is affiliated with the State and National Home Economics Associations.

Officers are: president, Eunice Hines; vice president, Martha Holbrook; treasurer, Elizabeth Dennis; secretary, Dorothy Sweaney.



The Kindergarden-Primary Club

The Kindergarden-Primary Club was organized in February, 1928. The purposes of the club are to gather and disseminate knowledge of the movements for the education of young children, and to promote good fellowship on the campus. The officers for 1933-34 are: president, Mary Jane Weber; vice president, Helen Lundeen; secretary, Isabelle Wood; treasurer, Ruth Ewald, and advisors, G. Hazel Swan and Jeanne Parrish.

Lambda Chi



Lambda Chi, honorary art fraternity, was founded in 1932. Its members are as follows:

Actives: Nadine Schumacher, president; Alphoretta Kirk, vice president; Donald Peck, secretary; Winifred Schram, treasurer; Corrine Gainer, Mabel Grabbenstetter, June Harrison, Janet Jones, Edward Pfeil, John Ryzner, Louaine Schram, Nadine Waters, Mabel Zurcher.

Honorary members: Miss Harriet Adams, Miss Mary K. Boswell, Miss Nina Humphrey.

Pledges: Naomi E. Hanna, Jessie Hinds, Neva Watkins, Roger Wolcott, Julia Wood.

THE 1934 CHESTNUT BURR

Manual Arts Club



The club is comprised of the majors and minors in the manual arts department. Prominent speakers address the club during the year. Each year is featured by the annual publication, "The Square."

Officers are Malvern W. Randels, president; Eli Steigner, vice president; Stephen Borsic, secretary; Covin Gerig, treasurer; Professor Elbert Tischendorf, faculty advisor.



Physical Education Club

The physical education club aims are: to promote fellowship, improve sociability, stimulate professional interests, and to discuss problems in physical education. Club meetings are both social and professional. Officers for 1933-34 are: Alvin Romito, president; Guy Iarussi, vice president; and Helen Miklus, secretary and treasurer.



Omega Phi Delta

Omega Phi Delta, the women's athletic honorary, was organized in 1932. Although a small body, it has been active in promoting athletic recreation for the women of the college. Officers are: Margaret Acken, president; Helen Mickhus, vice president; Evelyn Brillhart; Harriet Ream, treasurer. Pledges are: Dunstan, James, Mason, and Neumann.

Women's Athletic Association Board



The W. A. A. provides wholesome and recreational activities for all women of the college. All indoor and outdoor sports are included. The officers of the board are: Margaret Acken, president; Lillian Neumann, secretary; Elizabeth Mason, treasurer; faculty members, M. H. Apple and G. Drew. A record of accumulated points is kept by this body and awards are given at the spring banquet.

THE 1934 CHESTNUT BURR

Off Campus Women's Club



The Off Campus Women's club is made up of students who do not live on the college campus. The club has furnished a very attractive club room. Officers are: Vera Cochran, president; Genevieve Parker, secretary; Helen Strum, vice president; and Betty Brogan, treasurer.

Ohio Valley Club



The Ohio Valley club was organized to promote a greater friendship among the Kent State students and to secure more students from the Ohio Valley. Dr. A. B. Garrett is the advisor. The officers are: Vivian Rogers, president; Harry Helling, secretary; and Eileen Richards, treasurer.

Le Cercle Francais

Le Cercle Francais was organized in 1928, to promote intellectual advancement, sociability, and culture in the French language. Officers are: Lawrence Watrous, president; Ruth Kukuk, vice president; Vera Chamberlain, secretary-treasurer; and Miss Belle Rowlen, advisor.

Glider Club

The glider club designed and built a two seater glider with a wing span of 45 feet. The glider has been flown as high as 1200 feet. It is flown and hangared at the Akron airport. Officers of the club are: Roger Wolcott, president; Lawrence Phillips, vice president; H. Law, secretary; E. Steigner, treasurer; M. Bennett, business manager; E. W. Tischendorf, advisor.

Y. W. C. A.

The Y. W. C. A. of Kent State College has as its purpose the participation in the World's Young Women's Christian Association and the advancement of the physical, social, intellectual, moral and spiritual interests of young women. Officers are: president, Helen Hastings; vice president, Grace Titterington; secretary, Eleanor Faloon; treasurer, Gertrude Quirk; advisor, Dean Verder.

Y. M. C. A.

The Y. M. C. A. is a fellowship whose primary purpose is to associate men and boys with Christian living, and to help them to discover the full meaning of Christian discipleship for their own lives and for society. A program has been offered that may develop character and fellowship. Officers are: Charles Glatzer, president; Lower Kellogg, vice president; Hubert Hensel, secretary and treasurer; advisors, Dr. A. B. Garrett and A. W. Coven.

Mathematics Club

Students interested in the study of mathematics meet once every two weeks for the purpose of considering topics of mutual interest. These topics include both technical presentations and informal discussions. The officers for the year are: Duane Baker, president; Jerry Baird, vice president; Mary McKean, secretary.



Fraternities and Sororities

Delta Phi Sigma

Founded 1924



OFFICERS

<i>President</i>	Harold Law
<i>Vice President</i>	Harold Gear
<i>Secretary</i>	Jay Miller
<i>Treasurer</i>	Corvin Gerig
<i>Historian</i>	Glen Jordan
<i>Chaplain</i>	Donald Ulrich
<i>Sgt. at Arms</i>	Kenneth Hissner

ACTIVES

Earl Skillicorn	Alfred See	Harry Gilcrest
Joe Gettrust	Paul Strahl	Paul Schear
Earl Wright	Frederick Bundy	Elmer Dunlavy
Ralph Riddle	Sam Lennon	Glenn Andrews
Forest Hawk	Harry Lohr	Donald Ulrich
Charles Glatzer	Kenneth Hissner	Eugene Korb
Clarence Straub	Harold Briola	Howard Daily
John Kalkas	John Wilson	William Gressard
Bill Langell	Robert Katzenmeyer	William Helmboldt
Albert Shambarger	Irwin Duff	Joe W. Wright
Dick Bolich	Harlan Hayes	Robert Burns
	Donald Housley	

PLEDGES

Lewis Gorham	Don Ranney	Herman Jones
William Getz	Wilbur Janda	Richard Hansen
Edward Garrison	Frank Taborsky	Harold Williamson

FACULTY ADVISOR

Dr. A. L. Heer

HONORARY MEMBERS

Prof. E. Turner Stump	Dr. O. H. Williams
-----------------------	--------------------

MEMBERS ON FACULTY

Prof. Chester E. Satterfield	Prof. James Beck
------------------------------	------------------



Sigma Tau Gamma

Iota Chapter Founded 1927



OFFICERS

<i>President</i>	Alton Schopfer
<i>Vice President</i>	James Craig
<i>Secretary (1st Sem.)</i>	Burdette Frost
<i>Secretary (2nd Sem.)</i>	Robert Baumgardner
<i>Treasurer</i>	Robert Bogenrief
<i>Business Manager</i>	Seymour Fear
<i>Corres. Sec. (1st Sem.)</i>	Robert Hall
<i>Corres. Sec. (2nd Sem.)</i>	Lester Furney
<i>Historian</i>	Marion DeWeese
<i>Sergeant-at-Arms</i>	Harold Wendelken
<i>Chaplain</i>	Wilmer Munzenmayer
<i>Musical Director</i>	Ottmar Weyer
<i>Social Chairman</i>	Maxwell Williams

ACTIVES

Bancroft, Norris	Ensminger, Allan	Ray, Henry
Baumgardner, Robert	Farinacci, John	Robinson, Roy
Bogenrief, Robert	Filson, Russell	Schopfer, Alton
Bryan, Graydon	Frost, Burdette	Seifert, Walter
Carpenter, Kenneth	Furney, Lester	Wallace, Wayne
Converse, John	Hall, Robert	Watkins, David
Craig, James	Huston, Fred	Wendelken, Harold
DeWeese, Byrne	Jones, James	Weyer, Ottmar
DeWeese, Marion	Kisseberth, Dean	Williams, Maxwell
	Munzenmayer, Wilmer	

ADVISOR

Mr. E. C. Stopher

HONORARY MEMBERS

Dr. A. B. Garrett	Dr. J. L. Blair	Dr. A. W. Stewart
Mr. F. G. Denker	Dr. A. O. DeWeese	Mr. B. F. Engleman

PLEDGES

Baumberger, Wayne	Horlak, Michael	Urban, George
Copeland, Clair	Hovey, Frank	Wilson, Robert
DeEulis, Julio	Magee, Earl	Young, William
Flanders, Robert	Smith, William	Zupan, John
Foust, Clarence	Troyer, Loris	Thomas, Earl
	Tyler, Clifford	



Kappa Sigma Chi

Founded at Kent State College, 1931



OFFICERS

Joe Carl	President
Alvin Romito	Vice President
Ross F. Hoy	Secretary
Malvern Randels	Business Manager
Dr. H. P. Rogers	Faculty Advisor
Dr. Allen Coven	Faculty Advisor
Dr. Maurice B. Palmer	Faculty Advisor

ACTIVES

John Alexander	Samuel Rufo
Kenneth Alexander	Samuel Cipriano
Burton Smith	John Gruszecki
William Saari	Peter Cipriano
Clyde Lapp	Earnest Gialluca
Arthur Caniglia	Donald Cook
Ed Ostervich	Matthew Flower
Guy Iarussi	Hubert Gardner
Donald Cassler	John Gidley
Joseph Rinaldi	Russel Gardner

PLEDGES

Philip Angela	Michael Serene
Peter Wawrin	Kenneth Damann
Joseph Page	Michael Branchik
Robert Eisel	Joseph Kearns
Nelson Benson	Francis Galati
Peter Damkov	Frank Sancie
John Stetler	Victor Gilly
Paul Boyich	Arthur Gennett
Ralph Parmigian	Frank Julian





Alpha Phi Beta

Founded at Kent State College, 1931



Lower H. Kellogg	<i>President</i>
Virgil T. Utterback	<i>Vice President</i>
Duane Baker	<i>Rec. Secretary</i>
Russell G. Cover	<i>Cor. Secretary</i>
Charles R. Poole	<i>Treasurer</i>

ACTIVES

Donald Alderman	Robert Miller	Richard Tuttle
Duane Baker	Richard Neal	Virgil T. Utterback
Dale Bowman	Justin Olinger	Lawrence Vagnozzi
Russell G. Cover	Werner Paul	Herbert V. Wands
Louis A. Egerer	Charles Poole	James B. Wilder
Lower H. Kellogg	Eugene Shank	Ralph Williams
	Robert Smith	

PLEDGES

Chester Dornbush	Karl Huge	Charles Thompson
Williard Few	Paul Parker	Vergil Yoder
	Nelson Salathe	

HONORARY MEMBERS

Dr. H. E. Stellson	Prof. Merle E. Wagoner
--------------------	------------------------

PATRONS

Prof. H. A. Cunningham	Dr. David Olson
Prof. Edward H. Pake	Dr. Louis A. Tohill



Sigma Sigma Sigma

Founded at Virginia State Teachers College, 1898
Kent State Chapter Founded, 1925



OFFICERS

Mable Law	President
Janet Holt	Vice President
Aldeen Cox	Rec. Secretary
Bertha Du Pont	Treasurer
Mary Ellen Young	Cor. Secretary
Mona Fletcher	Advisor

PATRONS

Mr. and Mrs. Emmett C. Stopher
Mr. and Mrs. G. Frank Elgin
Dr. and Mrs. A. Sellew Roberts

ACTIVES

Vera Cockran	Dorothy Brown	Eleanor Dunbar	Nancy Hollister
Iris Applehans	Evelyn Johnson	Frances Day	Laura Mae Hamill
Martha George	Virginia Raysor	Mary Miller	Florence Punchoon
Alta Bancroft	Ruth Basel	Alice Wilcox	Margaret Swanson

PLEDGES

Anne Ress	Sally Hum	Margaret Toth	Margaret Beebout
Esther Courson	Arlene Ladrach	Jane Ungashick	Caroline Elasesser
Martha Smith	Jane Lowry	Leota Butler	Phyllis Mae Weyer
Neva Watkins	Jean Moyer	Betty Kunert	Betty Leffingwell
Doris Casper	Arlene Palfi	Isabelle Wood	Marion Burchard
Jean Hastings	Janet Pfeil	Charlene Buell	Mary Ellen Spencer
Jean Horn			Margaret Stopher



Delta Sigma Epsilon

Founded at Miami University, 1914
Kent Chapter Founded, 1926



OFFICERS

Helen Hoffman	<i>President</i>
Helen Dunstan	<i>Vice President</i>
Betty Forner	<i>Secretary</i>
Irene Huffman	<i>Chaplain</i>
Dorothy Genuske	<i>Treasurer</i>
Ruth Donahue	<i>Sergeant-at-Arms</i>
Gullan Melin	<i>Historian</i>
Ruth Shaw	<i>Advisor</i>

PATRONS

Mr. and Mrs. John L. Blair
Mr. and Mrs. E. Turner Stump
Mr. and Mrs. James Beck

ACTIVES

Romaine Caldwell Marjorie Russell

PLEDGES

Doris Hablen	Virginia Aiken	Mary Muir	Katherine Booth
Jean McSorley	Gertrude Teters	Ruth Marrell	Virginia Harpman
Bernita Elliot	Esther Laird	Ruth Hamill	Jayne Buckmaster
Mildred Dick	Ethel Jones	Vivian Rogers	Ethel Mac Harlan
Helen Denchy	Jane Peet	Lisbeth James	Mary Jane Stuart



Alpha Sigma Alpha

Founded at Miami University, 1914
Kent State Chapter Founded, 1926

OFFICERS

Mary Jane Fairchild	<i>President</i>
Winifrede Schram	<i>Vice President</i>
Helen Strum	<i>Secretary</i>
Dorothy Bowers	<i>Treasurer</i>
Harriet Franklin	<i>Chaplain</i>
Louaine Schram	<i>Registrar</i>
Helen McClafflin	<i>Advisor</i>

PATRONS

Mr. and Mrs. T. E. Davey, Jr.
Mr. and Mrs. Ross Schram
Mr. and Mrs. Oliver Wolcott
Dr. and Mrs. A. Sellev Roberts

ACTIVES

Bette Anderson	Marion Maddock	Helen Yelicheck
Florence Flower	Helen McGuigan	Berdine Schumacher
Laurel Hanley	Violet Popp	Jane Smith
Jeanne Hollander	Rosemary Price	Freda Sturgil
Janet Jones		Sue Wampler

PLEDGES

Hilda Austin	Velma Kauffman	Joyce Musselman
Mildred Bowers	Ruth Klein	Marie Stambaugh
Virginia Cipra	Margaret Kroeck	Lenore Shuman
Vernell Dawson	Maryellen Hollander	Irene Schieber
Mary Lil Frank	Mary Gettrust	Rosalie Wolfe
Ardis Jones	Florence Meech	Dorothy Fitzgerald



Theta Sigma Upsilon

Founded at Kansas State Teachers College, 1907
Kent Chapter Founded, 1926



OFFICERS

Marcella Rush	<i>President</i>
June Harrison	<i>Vice President</i>
Nadine Schumacher	<i>Secretary</i>
Evelyn Keifer	<i>Treasurer</i>
Mary Elizabeth Snyder	<i>Editor</i>
Mary Kathryn Boswell	<i>Advisor</i>

PATRONS

Mr. and Mrs. Eric T. Griebing
Mr. and Mrs. E. W. Tischendorf

ACTIVES

Josephine Cotman	Christine Roberts
Geraldine Quimby	Frances Fisk

PLEDGES

Leora Benning	Alyce Wenger	Sue Lisko
Jane Paul	Eleanora Weaver	Rose DeVore
Anne Bianchi	Anne Ruddy	Alice Spitz
Evelyn Casper	Zita Reuth	Mary Jane McLaughlin
Louine Pardee	Evelyn Dick	Mary Agnes Whiteley
Freda Studer	Olive Swartz	Dorothy Heminger
Mary Jane Weber		Justa Witherspoon



Pi Delta Theta

Founded at Miami University, 1922

Kent Chapter Founded, 1926



OFFICERS

Polly Stonehill	<i>President</i>
Audrey Moore	<i>Vice President</i>
Grace Coppersmith	<i>Secretary</i>
Claire Roeble	<i>Treasurer</i>
Ruth Bass	<i>Advisor</i>

PATRONS

Mr. and Mrs. A. W. Coven
 Mr. and Mrs. J. T. Johnson
 Mr. and Mrs. J. T. Turner

ACTIVES

Ruth Loomis Tillie Gaydos Jeanette Van Fleet

PLEDGES

Lucille Dickinson
 Virginia Boone

Goldie Bartz
 Jacalyn Fox

Marguerite Diehl
 Helen Coppersmith



Alpha Sigma Tau

Founded at Ypsilanti, Mich., 1898

Kent Chapter Founded, 1927

OFFICERS

Eunice Hines	<i>President</i>
Janet Knot	<i>Vice President</i>
Sula Neal	<i>Cor. Secretary</i>
Ruth Collier	<i>Rec. Secretary</i>
Lucille Tarr	<i>Treasurer</i>
Regina Stam	<i>Chaplain</i>
Harriet Adams	<i>Advisors</i>
Laura E. Hill	

PATRONS

Miss Harriet Adams
Mr. and Mrs. R. E. Manchester
Mr. and Mrs. Dick Donaghey

ACTIVES

Wilda Belle Bosch	Corrine Gainer
Mary Lou Scullion	Kay Kenney

ASSOCIATE MEMBER

Lucille Jacobs

PLEDGES

Ruth Hoffman	Eleanor Bader	Dorothy Traut	Dorothy Williamson
Helen Todut	Betty Corrigan	Ruth Ruhlman	Bernadette Kramer
Ada Swan	Peg Haines	Ruth Merrick	Bernice Baumberger
Helen Sixt	Marion Hess	Mary Curry	Barbara Bostwick
Edith Newcomb	Phyllis Hoffman	Helen Lundeen	Beatrice Hawkins
Pauline Wilde	Jeanette Zorger	Ruth Whittlesey	Mary Helen Zimmer
Lucille Walsh	Lucille Wright	Auroa Bicellus	Margaret Whittlesey
Luella Siegrist			Elizabeth Streine



Pi Kappa Sigma

Founded at Ypsilanti in 1894

Kent Chapter Founded, 1926



OFFICERS

Lucille Galloway	<i>President</i>
Kay Barker	<i>Vice President</i>
Ruth Kukuk	<i>Sec-Treas.</i>
Jeannette Dawson	
Adah Broadbent	<i>Advisor</i>

PATRONS

Mr. and Mrs. Frank Galloway
Mr. and Mrs. T. E. Davey

PLEDGES

Carol Friedebaugh
Lucille Arnold
Lillian Gottscholt

Marion Pyson
Anne Bernard
Helen Croskey
Isabelle DeSimio

Jane Geer
Janice Geer
Edith Malpass



Phi Alpha Alpha

Founded at Kent, 1930



OFFICERS

Martha Taylor	President
Martha Holbrook	Vice President
Dorothy Kenty	Secretary
Ethel Maurer	Cor. Secretary
Annetta Ogg	Treasurer
Doris Bobb Kinneman	Advisor
Bertha L. Nixon	Associate Advisor

PATRONS

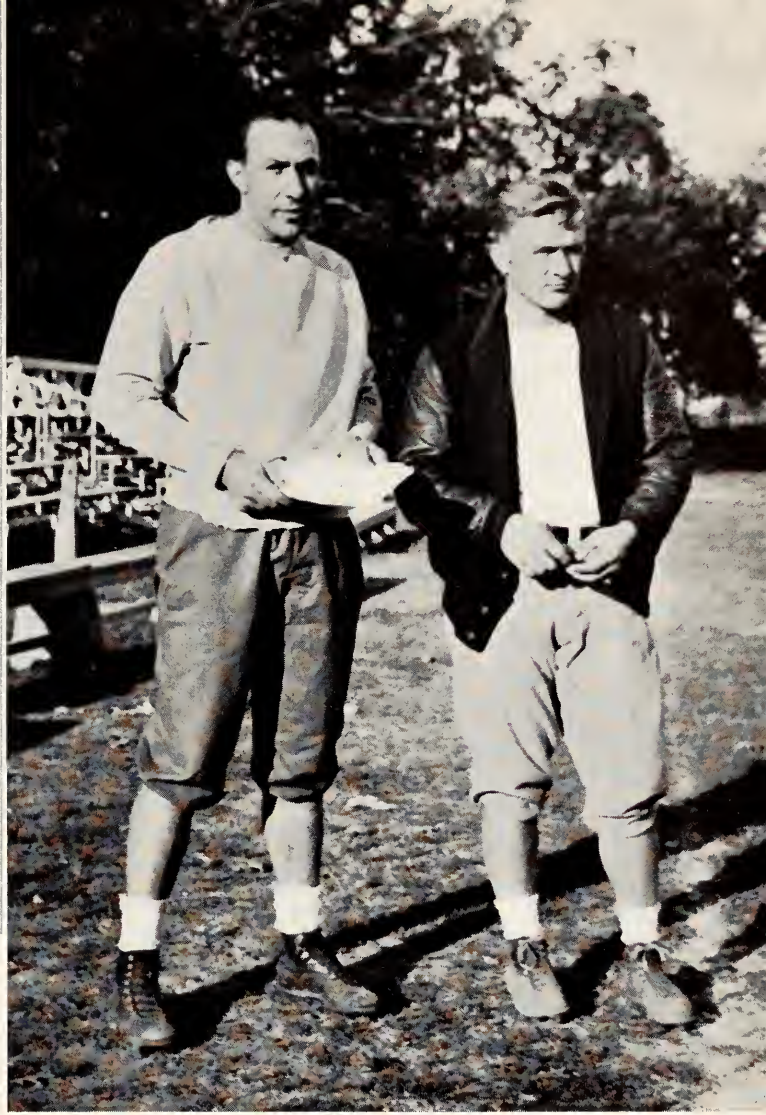
Mr. and Mrs. Fren Musselman
 Dr. and Mrs. A. W. Stewart
 Mr. and Mrs. F. N. Harsh

ACTIVES

Helen Hall	Jessie Hinds	Helen Vaughn	Na Vera Anderson
Gladys Stanley	Nellie Williams	Pauline Young	Mary Agnes Keller
Alphoretta Kirk	Helen Hastings	Ruth Puffer	Lois Dean Straight
Gertrude Quirk	Katherine Garvin	Irene Puffer	Mary Anna Nickerson

PLEDGES

Mary Brannon	Wilma Van Oster	Jean Schu	Marie Smith
Marion Howard	Kathryn Leggett	Victoria Smolen	Grace Adams
Eleanor Fear	Dorothy Sabin	Rosalia Schmaltz	Virginia Saulter
Ina Richards	Margaret Romp	Blanche Luke	Lucille Grenisen
Leta Sells	Sara Young	Ruth Benedict	



Athletics

- Major Sports
- Minor Sports





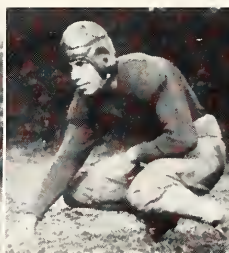
Major Sports



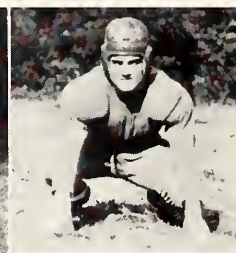
HAGERDON
End



FLOWERS
End



LANDIS
Tackle



CIPRIANO
Guard

Football

KENT State's football team, with a .500 average for the 1933 season in conference competition, completed one of the most successful of recent years. Change in personnel of the coaching staff, and the presence of strong sophomore material, were the features of the gridiron campaign, in addition breaking the string of defeats.

Coach Joe W. Begala was named head football coach on the eve of fall registration, with Coach Gus Peterka as his assistant. These men, familiar with the material at Kent State, had the united support of students, faculty, alumni, and townspeople. The Golden Flashes won two games, played three scoreless ties, and lost two games. Akron played on Rockwell field for the first time, as did Mount Union. The addition of bleachers seating nearly 1,000 persons helped attract large crowds to the local games.

Kent traveled to New Concord for its initial game against a powerful Muskingum eleven. The game was hard fought but a slight let down on the part of the Flashes paved the way for two Muskie touchdowns leaving Kent on the short end of a 12 to 0 score at the final gun.

The Akron Zippers invaded Rockwell Field and succeeded in taking the measure of the Begalamen to the tune of 19 to 6 after Kent had gained a 6 point lead due to a blocked punt. Akron came back strong scoring late in the second period tying the score at 6-all as the first half ended. In the second half it was all Akron as Dreisbach and Hutchinson pounded the Kent line and finally succeeded in wearing it down. Hutchinson scored the final points of the game when behind perfect interference he sprinted 61 yards to score.

Capital University of Columbus was turned back on their invasion of the home field 13 to 0 but only after a nip and tuck battle. The Flash line played stellar ball in this game turning back the opposition time after time within the very shadows of the goal posts when it seemed as though nothing could stop their drive for a score.



WHITMIRE
Tackle



CANIGLIA
Guard



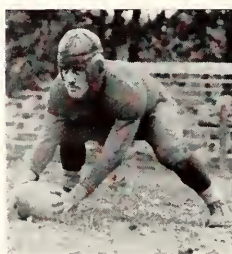
RINALDI
Tackle



KLING
Center



Varsity Football Squad



RUFO
Center



LITTLEPAGE
Halfback



TABORSKY
Quarterback



WOLFE
Halfback

Playing under the arcs at Ashland, the Blue and Gold gained a moral victory by holding a much heavier and more rugged team to a scoreless tie. Ashland made determined advances on the Flashes goal but to no avail. On one occasion Widowski intercepted a pass but was caught from behind after a 50-yard run and a certain score. Taborsky broke loose a bit later giving a vivid demonstration of broken field running but was tripped by an error on the part of one of his team mates stopping a sure touchdown. In the closing minutes of the game Kent worked the ball within the Ashland 10-yard line but the attempted passes just seemed to slide off the fingers of the desperately striving ends and the game ended with the ball deep in Ashland's territory.

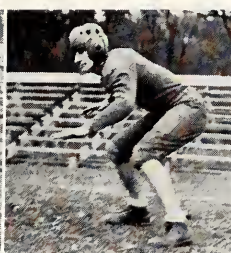
With the mythical Portage County title at stake, the second consecutive scoreless game was played against the Hiram Terriers. Both teams played cautious football as neither attempted many passes but resorted more to straight football to carry them to a victory. On two different occasions Hiram

instead of passing attempted field goals. Wolfe intercepted one of the few Hiram passes on his own 12 racing to the Terrier 33 before being tackled from behind, but the Flashes lost the ball a few seconds later when Hiram intercepted one of Widowski's passes. The rest of the game resulted in a punting duel between Taborsky and Kelker with both men booting their teams out of danger when a slip by either would have resulted in a touchdown.

Homecoming was celebrated righteously when the Blue and Gold rolled over a visiting Marietta eleven 12 to 0 in a bitterly fought game with Kent capitalizing on the breaks. Littlepage snagged a Marietta pass on his own 7-yard line and sprinted the remaining 93 yards for the first score. In the second half Widowski plunged over for the second and final score after Kent had advanced the ball 65 yards down the field on straight football. Marietta fought desperately to score but the Flashes were not to be stopped as they succeeded in staving off the advances of their opponents when scores seemed imminent.



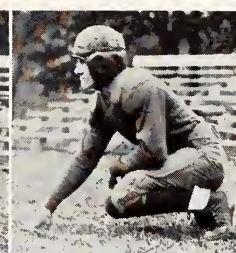
WIDOWSKI
Fullback



EISEL
End



FLANDERS
End



ECKERT
Guard

Freshman Football Squad





RIPLEY
End

B. DeWEESE
Tackle

NICKERSON
Halfback

IARUSSI
Tackle

Playing on Rockwell Field which was covered with mud, water, and snow, a visiting Mount Union team held the Begalamen 0 to 0 to complete the 1933 football schedule for Kent State. The soggy, sloppy condition of the field prevented any spectacular play but Kent almost scored in the final minutes of play when Eddie Ostervieh waded, sloshed, and splashed his way from the Mount 35-yard line to the 4-yard marker before being stopped. The ball was advanced to the 2-yard line but on the next play the slippery condition of the ball caused a fumble and Kent's biggest chance to score had come and gone.

Coach Begala lost several lettermen this year, but will have many veterans back for next year's campaign and an abundance of material from the 1933 freshman squad. The six lettermen who will not return next fall are: Sam Cipriano, "Butch" Caniglia, Guy Iarussi, "Bing" Rinaldi, Walter Hagerdon, and Matt Flowers.

When the positions for the All-Ohio football team were picked, Hagerdon was given an end position on the second team while Iarussi received honorable mention at a tackle position.

1933 FOOTBALL RECORD

K.	Opponent	Op.
0	Muskingum	12
6	Akron	19
13	Capital	0
0	Ashland	0
0	Hiram	0
12	Marietta	0
0	Mount Union	0
<hr/> 31		<hr/> 31

Freshman Football

Forty-five yearlings answered Coach Elmer Dunlavy's call for freshman football practice. They were divided into three teams and held frequent scrimmages with the varsity and Kent State High school. Coach Dunlavy was greatly impressed with their willingness to cooperate, eagerness to learn, and their general spirit throughout the training period.

There were many promising men who should provide Coach Begala with a wealth of material when Kent returns to its grid wars next season.

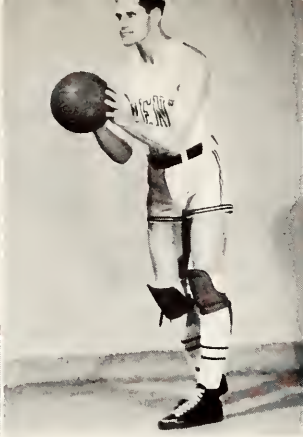
HAWK
Manager



DUNLAVY
Fresh Coach



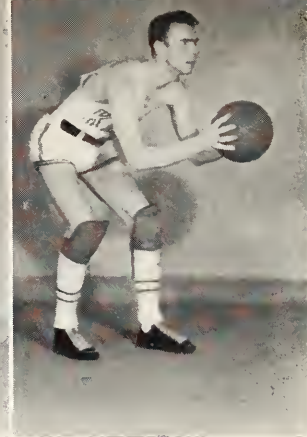
IARUSSI
Center



GERIG
Center



WIDOWSKI
Guard



LOHR
Forward

Basketball

WITH sophomores replacing veterans at most of the positions, and Bob Flanders ranking high among the scorers in the Ohio Conference, the Golden Flash basketball made a strong showing during the 1933-34 season. Under the tutelage of Coach Gus Peterka, Kent State's team gained strength in the closing weeks of the campaign, turning in a record of five victories and nine defeats.

Eight lettermen answered the first call to practice in December, but after Walter "Jim" Hagerdon was lost in mid-year because outside work kept him from registering for a full schedule, four sophomores supported the veteran Corvin Gerig. Gerig was shifted from guard to the center position.

PETERKA
Varsity Coach



CARL
Freshman Coach



FLANDERS
Forward



DeWEESE M.
Guard



DeWEESE B.
Forward-Guard



ULRICH
Forward

The Flashes were one of the strongest teams in the conference on offense, due largely to the work of Flanders. They lost several games by scant margins, and threw a huge scare into Akron U., conference champions, when they led the Zippers most of the game, only to lose because of superior reserve strength on the part of Akron. This game was the outstanding fray of the year, for the Zippers had been touted to defeat the Blue and Gold by a large score.

Bowling Green opened the season, winning 35-31. The Flashes were again edged 34-33 by Otterbein. Heidelberg's Student Princes proved to be a nemesis to Kent's hopes for a win as they won 36-26. Baldwin-Wallace made it four in a row winning 39-22 and Muskingum stretched the losses to five when they eked out a 32-31 decision.

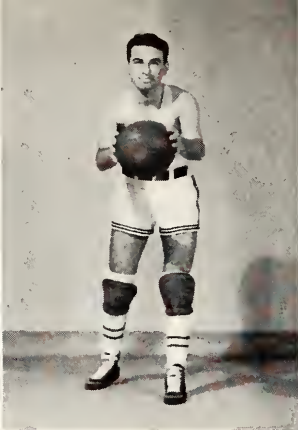
Capital was repulsed 42-19 for Kent's initial win. Then came the grueling battle with Akron in which Kent almost turned back the undefeated Hilltoppers. Mount Union won 35-21 as the inability of the Flashes to sink sucker shots spelled defeat.



HAGERDON
Guard



DAILEY
Guard



LOSITO



RANNY

Hiram was nosed 33-30 with Flanders connecting for twenty points. Capital took their first win over Kent in any sport when they squeezed out a 25-18 win due to the erratic playing of the Peterkamen. Kenyon, doped to beat the Flashes, were rolled over 32-20. Baldwin-Wallace again defeated the Blue and Gold 46-25 as Kent found the visitor's defense well nigh impenetrable.

Flanders ran wild to score twenty-six points to lead the Flashes to a 44-34 win in a return game with Kenyon and Hiram was literally blasted from the court 40-20 in the final game of the season.

Flanders led the individual scoring with 71 goals and 45 fouls for 187 points. Widowski was next with 74, followed by Gerig with 36.

The varsity was composed of Flanders, Lohr or Strahl at forwards; Gerig, center; Hagerdon, Widowski or M. DeWeese, guards. Reserves included, Iarussi, B. DeWeese, Dailey, Ulrich, Gardner, Fischer, Ruff, and Skillicorn.

Varsity Basketball Squad



1933-1934 BASKETBALL RECORD

K.		Opp.
31	Bowling Green	35
33	Otterbein	34
26	Heidelberg	36
22	Baldwin-Wallace	39
31	Muskingum	32
42*	Capital	19
20	Akron	26
21	Mount Union	35
33*	Hiram	30
18	Capital	25
33*	Kenyon	20
25	Baldwin-Wallace	46
44*	Kenyon	34
40*	Hiram	20

*Won.

419

431

Won 5 Lost 9 Pct. .357

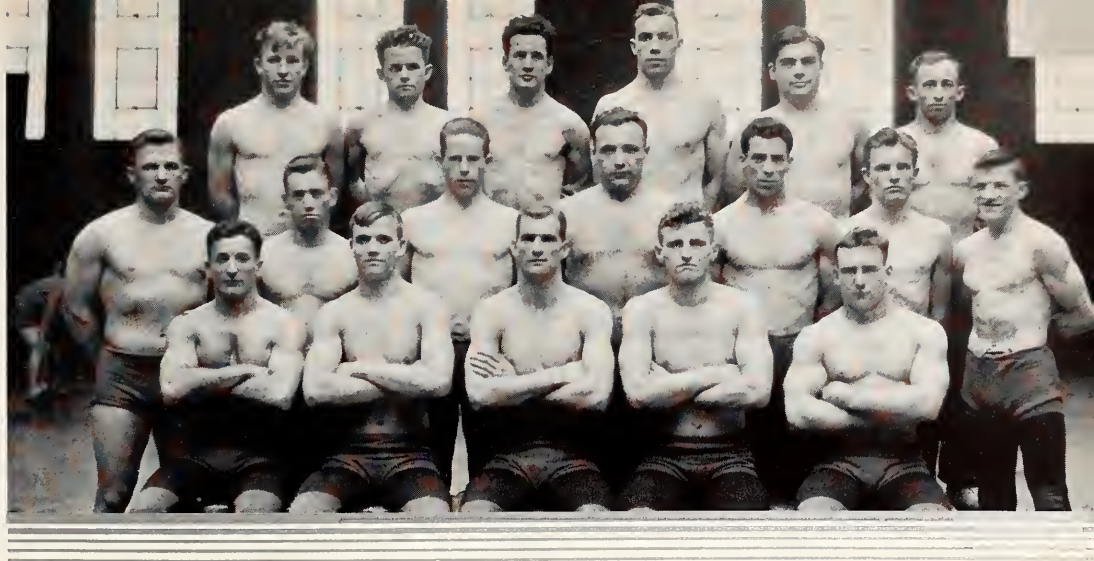


Freshman Basketball Squad

After two weeks of practice, Coach Joe Carl cut the original squad of 35 men to 15 and began whipping them in shape to provide varsity material for the 1934-1935 team. They scrimmaged the varsity and Kent State High school and played preliminaries to some of the home varsity games. Just before the tournament season started, Barberton high was met in a practice game.

There are several men of the Freshman squad who will make serious bids for varsity berths next year due to their cleverness and ability to play a consistent game of ball.

Varsity Wrestling Squad



Wrestling

COACH Joe Begala's Blue and Gold grapplers continued their winning streak from last season running their total to 15 consecutive wins before falling before Michigan State's powerful team in the last meet of the season.

Kent opened their schedule against Baldwin-Wallace winning 34½-1½. Fenn was the next victim of the Flashes onslaught falling 35-3 at Cleveland. Case was then shut out 34-0 in the third meet of the season.

Rochester Mechanics Institute from New York almost hung up a defeat for the Flash grapplers but was staved off in the final match when Otto Hach, in his first appearance before the Kent fans, and wrestling in the absence of Rinaldi, pinned his opponent, enabling Kent to win by a 17-12 score.

Coach Begala used his B team to defeat Fenn for the second time 33-3. Washington and Jefferson University invaded Kent but returned to Pennsylvania on the short end of a 31-3 score. Case was again trounced 26-11 for the Flashes seventh straight win.

The Blue and Gold invaded Michigan State only to have their impressive record of 15 straight wins annihilated when Michigan squeezed out a close 18-14 win to close the regular scheduled meets for the Flash matmen.

Kent registered 35 falls and won 16 decisions during the course of the season for a total of 224½ points. Opponents scored only 50½ points on 5 falls and 8 decisions. The squad was in the best of condition throughout their schedule of meets and displayed a superb brand of wrestling that the fans enjoyed to watch. Otto Hach proved to be the crowd pleaser with his unorthodox type of wrestling. Scott, Lukens, Taborsky, Littlepage, Terrill, Eckert, McCort, Gruszecki, and Rinaldi bore the brunt of the attack and gave splendid exhibitions of collegiate wrestling.



TERRILL
118 lbs.



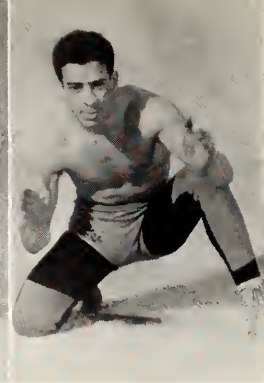
TABORSKY
Tri-State Champion
126 lbs.



McCORT
135 lbs.



ECKERT
135 lbs.



SCOTT
Tri-State Champion
145 lbs.

TRI-STATE MEET

Five Kent Wrestlers were crowned Tri-State champions at the Tri-State meet held at the Case Club in Cleveland which attracted teams from New York, Pennsylvania, and Ohio. This meet replaced the annual Ohio Intercollegiate tourneys held in former years. Three Flash grapplers successfully defended their State Championships won last year and two more men gained championships at the close of the meet. The men who won are:

Joseph Taborsky	126 lb.
Fred Scott	145 lb.
Jay Littlepage	155 lb.
Clive Lukens	165 lb.
Otto Hach, 2nd place	175 lb.
Joseph Rinaldi	Heavyweight

NATIONAL INTERCOLLEGIATE MEET

Seeking further laurels to those already gained in the Tri-State meet, Kent entered the National Intercollegiate meet held at Ann Arbor, Michigan, March 23-24. The class of collegiate wrestlers was met here, with colleges from all over the country represented. Kent sent a larger delegation of first and second place winners of the State Meets than any other college entered. Meeting men from Oklahoma Aggies and Indiana, the Flashes were eliminated in their first matches as Taborsky, Littlepage, Hach, and Scott were pinned by their opponents while Lukens and Rinaldi were decisioned.



FLOWERS
145 lbs.



BORLET
145 lbs.



LITTLEPAGE
Tri-State Champion
155 lbs.



HACK
Second Place
175 lbs.



GRUESZECKI
165 lbs.

WRESTLING RESULTS

K.		Opp.
34½	Baldwin-Wallace	1½
35	Fenn	3
34	Case	0
17	Rochester Mechanics	11
33	Fenn	3
31	Wash. & Jeff.	3
26	Case	11
14	Michigan State	18
<hr/> 224½		<hr/> 50½

Won 7. Lost 1. Pet. .875.

LANDIS
165 lbs.



LUKENS
Tri-State Champion
165 lbs.



RINALDI
Tri-State Champion
Heavyweight



BEGALA & DUNLAVY
Coaches





**Freshman
Wrestling
Squad**

Twenty-five freshmen reported to Coach Elmer Dunlavy to learn the fundamentals of the mat game. Under his coaching a few promising men are being groomed to carry on Kent's name in future years. The middleweight division seems to have the most promising material as there are several men who display an aptitude for the game. Coach Dunlavy has been greatly impressed by the keenness in evidence among the freshmen, and expects some good material for next year's team.



**Two
Tri-State
Champs**



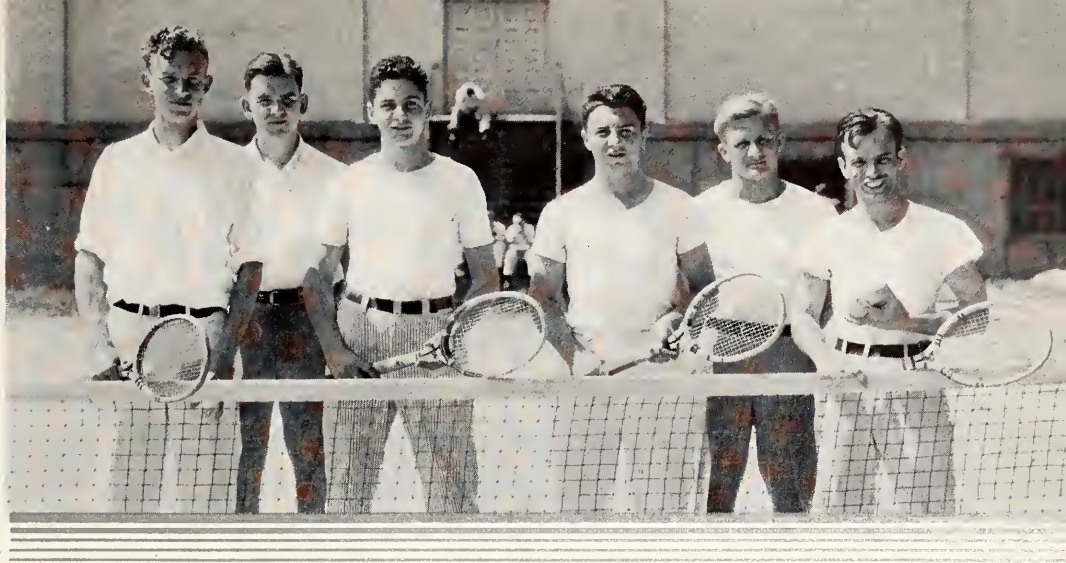
Minor Sports



Baseball

K. S. C.		Opp.
9	Ashland	6
2	Muskingum	9
1	Wooster	6
5	Oberlin	2
18	Fenn	2
5	Wooster	11
6	Ashland	4
4	Oberlin	8

Won 4. Lost 4. Pct. .500.



Tennis

K. S. C.		Opp.
2	Hiram	4
4	Fenn	2
2	Baldwin-Wallace	4
1	Case	5
5	Baldwin-Wallace	1
2	John Carroll	4
5	Fenn	1
5	Hiram	1



Gym Team

Seven meets were scheduled by Mr. Altmann, instructor of the varsity gym team, but due to cancellation of three meets by Akron University and Ohio State only four teams were met. The Germania Turners of Cleveland defeated Kent 324-287 in the first meet but Akron Turners were beaten 929-911. Akron gained revenge by defeating the Flashes 854-813.

Charles "Shorty" Glatzer, John McKay, Bob Burns, R. Johnson, Clark Braden, and Al Romito composed the varsity gym team for 1933-1934.

RESULTS OF MEETS

K.		Opp.
287	Germania Turners	324
929	Akron Turners	911
813	Akron Turners	854
576	Akron Y. M. C. A.	523

Intra - Murals

BASKETBALL

Won by K. M. K.



HANDBALL

Won by Barbarians.



SWIMMING

Won by Delts.



VOLLEY BALL

Tie between Delts and Barbs.



GYM MEET

Won by Delts.



HORSESHOES

Won by Gammas.

CROSS COUNTRY RUN

Won by Gammas.



Varsity "K" Association

The men who have won letters in various sports at Kent have formed an association which meets regularly for the advancement of athletics. Officers of the association are: James Hagerdon, president; Joseph Rinaldi, vice president; George Kling, secretary-treasurer; Walter Wolfe, sergeant at arms.

Cheer Leaders

"Shorty" Glatzer, "Jo" Cotman, and "Jack" Maurer, Kent State's three capable cheer leaders were to be seen cavorting wildly about the athletic field at all of the football games. Basketball also provided a setting for these noise extractors and they continued the good example they had set for themselves. They were indeed cheer leaders of distinction.



Features



"Miss Kent State"

. MISS BERNICE BAUMBERGER



"Maid of Honor"

. MISS DOROTHY FITZGERALD



Smile Girl and Most Popular Woman

. MISS ANNE RESS



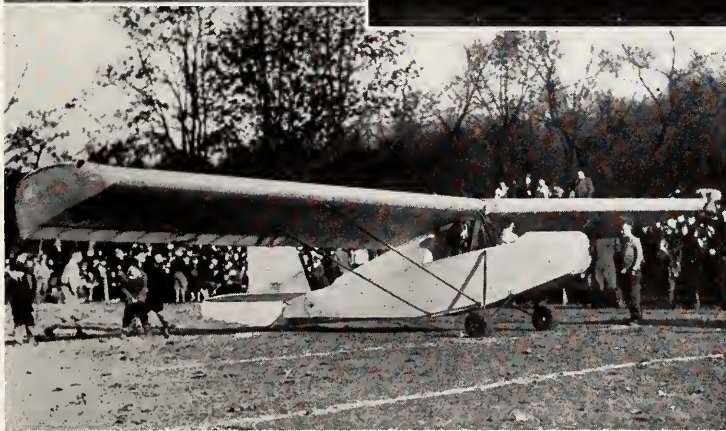
Most Popular Man

. MR. CHARLES GLATZER



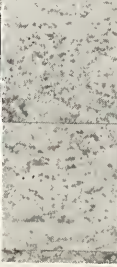
Homecoming Queen

. MISS DOROTHY HENSEL















The Chestnut Burr

The First Year Book of Kent State College

Published by The

WALDEN DRAMATIC CLUB

So reads the fly leaf of the first annual published on our campus, which at that time was strewn about with scaffolding. The sound of riveting was an accompaniment for the study of the Sciences and the Arts.

Merrill Hall was the Administration building and Lowry was known as Walden Hall.

The sixteen graduates, all women, were looking forward, as graduates will, and dedicated the annual in the following words:

"To the generations of young men and women who in the succeeding years will receive training in the Kent State Normal School."

And so "young men and women" we have the 1934 Chestnut Burr, bigger and better as a part of a bigger and better institution. Through the years the name has held its charm which so graciously holds our affections for the campus with its native Ohio tree, the Chestnut and its component part the "Chestnut Burr."

Excerpts from special features:

"Normal Bookshelf".

"House of a Thousand Candles" Walden Hall at 10:30 P. M.

"The Man Higher Up" Pres. McGilvery

"The Post Girl" Miss King

"The Heart Line" Dorm Phone

"The Broken Road" E. Main Street

"The Port of Missing Men" Kent State Normal

Who's Who

President, Alpha Phi Beta . . . Lower Kellogg
 President, Delta Phi Sigma . . . Harold Law
 President, Kappa Mu Kappa . . . Al A. Young
 President, Kappa Sigma Chi . . . Joe Carl
 President, Sigma Tau
 Gamma Alton Schopfer
 President, Barbarians . . . John Ryznar
 President, Alpha Sigma
 Alpha Mary Jane Fairchild
 President, Alpha Sigma Tau . . Eunice Hines
 President, Delta Sigma
 Epsilon Helen Hoffman
 President Phi Alpha Alpha . . Martha Taylor
 President, Pi Delta
 Theta Pauline Stonehill
 President, Pi Kappa Sigma . . . Lucile Gallaway
 President, Sigma Sigma
 Sigma Mabel Law
 President, Theta Sigma
 Upsilon Marcella Rush
 President, Alpha Psi
 Omega Albert Shambarger
 President, Beta Zeta Seymour Fear
 President, Blue Key Harold Law
 President, Chi Pi Anne Tescher
 President, Kappa Gamma Harold Law
 President, Lamda Chi Nadine Schumacher
 President, Omega Phi
 Delta Margaret Acken
 President, Phi Mu Forest Hawk, Jr.
 President, Cardinal Key Helen Hoffman
 President, W. A. A. Margaret Acken
 President, Physical Ed. Club . . Alvin Romito
 President, Omega Phi
 Delta Evelyn Brillhart
 President, Phi Epsilon
 Kappa Chas. Glatzer (Chairman)
 President, Biology Club Ray Nesbit
 President, College
 Theater Albert Shambarger
 President, Glider Club Roger Wolcott
 President, Home Economics
 Club Eunice Hines
 President, Manual Arts
 Club Malvern Randels

President, Men's Glee
 Club Robert Bogenrief
 President, Off Campus Women's
 Club Ruth Whittlesy
 President, Velvet Curtain
 Players, Maxwell Williams
 President, Women's
 League Martha Holbrook
 President, Y. W. C. A. . . . Helen Hastings
 President, Y. M. C. A. . . . Charles Glatzer
 Captain, Women's
 Debate Lois Whiteleather
 Captain, Men's Debate Max Williams
 Captain, Football Jimmy Hagerdon
 Captain, Basket-
 ball Corvin Gerig (Acting Captain)
 President, "Unter Uns" . . . Bernard Heuser
 President, French Club . . . Lawrence Watrous
 Editor of the Chestnut
 Burr Anne Tescher
 Business Manager Bill Langell
 Editor of the Kent Stater . . . Walter Seifert
 Manager of the College
 Theater Albert Shambarger
 President of Student Council . . Blaine Conley
 President of Inter-fraternity
 Council Al Losito
 President of Varsity K
 Club James Hagerdon
 Tri-State Wrestling Champ,
 126 lbs. Joe Taborsky
 Tri-State Wrestling Champ,
 145 lbs. Fred Scott
 Tri-State Wrestling Champ,
 155 lbs. Jay Littlepage
 Tri-State Wrestling Champ,
 165 lbs. Clive Lukens
 Tri-State Wrestling Champ,
 Heavyweight Ivo Rinaldi
 Homecoming Queen Dorothy Hensel
 Miss Kent State Bernice Baumberger
 Maid of Honor Dorothy Fitzgerald
 Popular Man Charles Glatzer
 Popular Woman and Smile
 Girl Anne Ress

Chestnut Burr advertisers are friends of the college and have the interests of the college and its student body at heart. The Chesnut Burr hopes the students will do their part by patronizing the advertisers in return for the co-operation they have given us.

Advertisements

Calendar » » 1933 - '34

September

Sun., Sept. 17	
Mon., Sept. 18	Freshman Week
Tues., Sept. 19	
Wed., Sept. 20	Upper Classes Register
Thurs., Sept. 21	Classes Begin
Sat., Sept. 23	Marshmallow Roast at Moulton
Sun., Sept. 24	Fraternity and Sorority Meetings
Thurs., Sept. 28	Kent Writers Club Dinner
Fri., Sept. 29	Kent Muskingum Game (Night)
Sat., Sept. 30	Alpha Sigma Tau Rough Initiation

"From the hilltops Kent State college comes a universal call."

1275 students respond to the call and classes immediately get under way.

Joe Begala and Gus Peterka are appointed head football and basketball coaches.

Clubs start to organize—and fraternities and sororities start "on the make" for new members.

October

Mon., Oct. 2	Fraternity and Sorority Meetings
Tues., Oct. 3	"The Valiant" (Assembly)
Thurs., Oct. 5	Pep Meet (Athletic Field)
Friday, Oct. 6	Faculty Picnic Moulton Hall
Sat., Oct. 7	Kent Akron Game
Mon., Oct. 9	Freshman*Sophomore Brawl Delta Phi Sigma Smoker
Tues., Oct. 10	Ellis Vander Pyle—Assembly Speaker
Wed., Oct. 11	Intramurals—Sigma Tau Gamma Smoker
Thurs. Oct. 12	Big*Little Sister Tea—Tri Sigma House Warming—K. P. Luncheon
Friday, Oct. 13	Kent Capital Game (Here)
Sat., Oct. 14	Delta Sigma Epsilon Formal Initiation
Mon., Oct. 16	Fraternity and Sorority Meetings
Tues., Oct. 17	Dorothy Fuldheim—Assembly Speaker
Wed., Oct. 18	Burr Party Political Rally
Thurs., Oct. 19	Home Economics Picnic—College Grill Lowry Hall Party—Phi Alpha Alpha House Warming
Fri., Oct. 20	Kent Ashland Game (Night)
Sat., Oct. 21	Phi Alpha Alpha Tea
Mon., Oct. 23	Fraternity and Sorority Meetings
Tues., Oct. 24	Dr. O. W. Warmingham Assembly Speaker Homecoming Queen Election
Wed., Oct. 25	Kent Writers Club Meeting
Thurs., Oct. 26	Week-end Vacation at 4 P. M.
Fri., Oct. 27	N. E. O. T. A. Convention (Cleveland)

October started with a bang when the students gathered on the athletic

KODAKS

FOUNTAIN SERVICE

CANDY

STATIONERY

MAGAZINES

and

Everything you might expect in a

Modern Drug Store

at

HALE B. THOMAS

Prescription Pharmacy and Drug Store

Main and Water Streets

Phone 150

Phone 151

Twin Coaches

Twin Coaches, manufactured in Kent,
continue to serve the NATION'S principal
centers and also serve Kent and adjacent
communities.

MODERN



SAFE

field for a real pep rally. After an animated demonstration the entire group marched through town.

The political parties again went into "huddles" and emerged with two organizations—Burrs and Progressives. Heavy balloting featured the Home Coming Queen election. Dorothy Hensel, a sophomore, won the title.

The annual "Big and Little Sister Tea" formally introduced all new women to the upper class women.

The Student Council for the first time was elected on the basis of a real student governing body.

Pan Hellenic council caused quite a stir in collegiate circles when they deprived Alpha Sigma Alpha sorority of all pledging rules.

The month closed with an extra day vacation due to the yearly meeting of the N. E. O. T. A.

November

Thurs., Nov. 2	Homecoming Play "Berkeley Square" College Aud. 8:15
Friday, Nov. 3	Homecoming Play "Berkeley Square" College Aud. 8:15
Sat., Nov. 4	Kent-Marietta Game Fraternity-Sorority Banquet Homecoming Dance—Gym
Sun., Nov. 5	Theta Sigma Upsilon Formal Initiation
Mon., Nov. 6	Intra-murals
Tues., Nov. 7	Samuel Wyer (Assembly Speaker) Pi Kappa Sigma Rush Party
Thurs., Nov. 9	Phi Alpha Alpha Rush Party K. P. Club Luncheon French Club Meet Establishment of Kent-Lakewood Club
Fri., Nov. 10	Theta Sigma Upsilon Rush Party Lowry Hall Party Tri Sig Rush Party
Sat., Nov. 11	Theta Sigma Upsilon Rush Party
Mon., Nov. 13	Intra-murals Speech Banquet (Robin Hood)
Tues., Nov. 14	Pat Smith (Assembly Speaker) Phi Alpha Alpha Formal Initiation
Wed., Nov. 15	Freshman Lecture Manuel Arts Club Banquet
Thurs., Nov. 16	Lambda Chi Initiation Alpha Sigma Tau Rush Party Evening Classes Begin—Training School
Fri., Nov. 17	Delta Sigma Epsilon Rush Party College Theatre Formal Dance B. W.-Kent Debate
Sat., Nov. 18	Kent-Mt. Union Game—Here Phi Alpha Alpha Rush Party Alpha Phi Beta Banquet Greek Letter All College



THOSE who instinctively appreciate the better things . . .
fill their jewelry needs at The Webb C. Ball Company.

Purely personal jewelry, watches, diamonds and gifts of every
kind are here for your approval . . . for as much or as little
as you wish to pay.

The WEBB C. BALL Co.

1114 Euclid Avenue

13201 Shaker Square

**IMPERIAL
DRY CLEANING CO.**

Portage County's Oldest
Largest and Best
Cleaning Establishment

113 N. Water Street
Kent National Bank Bldg.
Kent, Ohio

*Service
Courtesy*

*Efficiency
Quality*

S. C. BISSLER & SON

Special Furnishings for Fraternity and
Sorority Homes, Including—

Double Deck Beds
Lounge Suites
Dining Tables
Rugs, Carpets
Lamps and
Study Desks

*Complete Home Furnishers
Funeral Directors*

Corner Main and River Streets
Telephone 530

KENT, OHIO

Mon., Nov. 20	Intra-murals Vienna Boys Choir Social Committee Meet
Tues., Nov. 21	One Act Play—Assembly Pi Delta Theta House Warming
Wed., Nov. 22	Presidents of Women's Organizations Meet Men's Union Smoker
Thurs., Nov. 23	Freshman Players Meet Beta Zeta Dinner Phiz Ed Dinner Moulton Theatre Party
Fri., Nov. 24	Alpha Phi Beta Theatre Party—Akron
Sat., Nov. 25	Sigma Sigma Sigma All Greek Dance
Tues., Nov. 28	Thanksgiving Service—Assembly
Wed., Nov. 29	Thanksgiving Vacation Begins
Thurs., Nov. 30	Vacation

Featuring "Berkeley Square" with Don Parkinson, Harriet Harrington, and Robert Peebles; the Marietta game with Littlepage and Taborsky; the Glider Club with the "Golden Flash"; the homecoming dance with the alluring Miss Hensel; fraternities and sororities with house decorations and banquets; from Friday to Sunday, November 3-5, Kent had a whooping homecoming.

Sorority rushing season officially opened and all unaffiliated women were treated to a whirl of parties.

College theater started the formal season when they held their dance in the gym which was transposed into a dimly lighted race track. Novelty programs and decorations contributed to make it an astonishing success. Sue Wampler, an A. S. A., was the theater queen.

This month also witnessed the circulation of a petition favoring more All College dances—the first was held November 18.

Tri Sig started the All Greek letter affairs with a novelty "Greek Letter" dance.

A group of small boys ranging from 8 to 14 years gave one of the most popular recitals at Kent—the "Wiener Sangerknaben" from Vienna, Austria.

Wednesday the 29th finally appeared and everybody went home for the big meal.

December

Mon., Dec. 4	Classes Convene Student Recital—8:15
Tues., Dec. 5	Kent-Akron Debate Phi Alpha Alpha Rush Party Pi Delta Theta Rush Party
Wed., Dec. 6	Kent-Muskingum Debate
Thurs., Dec. 7	Kent-Wittenberg Debate S. S. S., P. K. S., A. S. T., T. S. P. Rush Parties
Fri., Dec. 8	S. T. P. Pledge Dance Kent-Bowling Green Debate Delta Sigma Epsilon Rush Party
Sat., Dec. 9	Moulton Hall Formal Kappa Mu Kappa Pledge Dance—Silver Lake

RICHARDS FLOWER SHOP

1312 North Mantua Street

PHONE 74

*Where Florestry is an Art,
Not Merely a Business*

Get Your School Needs
at
GRANTS

*Your Money Back
If Not Satisfied*

COTTAGE ICE CREAM SHOP

Fountain Service

134 E. Main

Phone 571-W

Compliments of **HORNING COAL AND SUPPLY CO.**

113 Lake St.

Phone 275-W

Kent, Ohio



Burr Basket Ball Team

Above is a picture of the Chestnut Burr basket ball team after a series of two games with the Kent Stater squad. Left to right — Gene Korb, Bob Miller, Glen Jordan, Harold Briola, Glenn Andrews, Bill Langell.

We regret that the Stater team, composed of Walt Seifert, Jim Craig, Wimpy Page, Bob Baumgardner, and Al Bamberger, was unable to have its picture taken after the slaughters in which the Burr team won 18 to 16 and 30 to 11. That was according to the Burr score keeper. According to the Stater score keeper the Staters won 18 to 17 and 46 to 16.

The games moved along smoothly except for the swelled heads, a few of the players acquired. The crowds were in an uproar as Wimpy Page and Glenn Andrews the stars of the games displayed unusual ability as basketceers and racketeers.

Doc DeWeese was attending physician. Joe Carl, referee, was last reported doing nicely.

Joe Begala was awarded the grippers cup because Walt Seifert, editor of the Stater was able to walk off the floor.

Mon., Dec. 11	Intra-murals
Tues., Dec. 12	Dr. Etham Colton (Assembly Speaker)
Wed., Dec. 13	Cardinal Key Installed at Kent
Fri., Dec. 15	Alpha Sigma Tau Sunset Dance Alpha Sigma Alpha Private Dance
Sat., Dec. 16	Kent-Bowling Green Basketball Game Summit Hall Xmas Party Delta Sigma Epsilon Rough Initiation
Sun., Dec. 17	Pi Kappa Sigma Xmas Tea
Mon., Dec. 18	Returns on Sorority Bids Off Campus Women's Club Xmas Party College Social Committee
Tues., Dec. 19	Kent-Youngstown Club Formed Phi Alpha Alpha, Delta Sigma Xmas Parties
Wed., Dec. 20	Xmas Concert Alpha Sigma Alpha Xmas Party
Thurs., Dec. 21	Phiz Ed Vaudeville Show Theta Sig, Pi Delt, Delta Sig Pledge Services Home Ec. Xmas Party
Fri., Dec. 22	Vacation at 4 P. M.
Dec. 23, 24, 25, 26, 27, 28, 29, 30, 31	

December arrived and the social activities still continued in full swing. Sigma Tau Gamma pledges entertained the actives in true night club style while the girls at Moulton offered something new in the line of a formal. The dance hall was transformed into a cruising ship and the entire effect was a nautical scene. The K. M. K. pledges feted their actives at Silver Lake Country club and had the place decorated in autumnal colors.

The higher ups among the Kent women installed Cardinal Key, a national honorary fraternity, this month. Another point for dear old Kent.

Alpha Sigma Alpha "took it" when it came to pledging new girls but this month marked their "never be down" spirit when they retaliated by holding two very exclusive and successful parties at Fairchild's in Ravenna, at the Robin Hood, and an Xmas party at the house.

After concerts and more Xmas parties everyone breathed a sigh of relief when vacation started December 22. "Good old Santa."

January

Wed., Jan. 3	Classes Convene
Thurs., Jan. 4	Kent-Cleveland Club Formed
Fri., Jan. 5	New Years Ball—Gym
Sat., Jan. 6	Delta Phi Sigma Pledge Dance—Moulton Hall 9-12
Sun., Jan. 7	Photographer Was Late for Burr Pictures
Mon., Jan. 8	It was Snowing
Tues., Jan. 9	Skool Started at 8:00 as Usual
Wed., Jan. 10	Skool Was Out at 4:00 as Usual

Continued on Page 162



The Robin Hood

While You are Here or When You
Return, We Extend Our Hearty
Welcome
Doug and Mrs. Miller

The Courier- Tribune

Ohio's Best Semi-Weekly Newspaper
ESTABLISHED 1852

●
Brings All the News FIRST

●
6c

Will Bring It to Your Door
Twice Weekly

Phone 26 or 462

THE Akers & Harpham COMPANY

ROOFING AND SHEET
METAL WORK

Corrugated Wire Glass
Skylights

1065 Dublin St.
Akron, Ohio



WE EXTEND OUR HEARTY
WISHES TO
KENT STATE COLLEGE
AND
ITS STUDENT BODY

OHIO EDISON CO.

Firestone

TIRES & BATTERIES
SPARK PLUGS



BRAKE
LININGS



OFFICIAL COLLEGE
JEWELER

G. F. ELGIN

Have Your Eyes
Examined by a
Licensed
Optometrist

*Special Attention to Watch
and Jewelry Repair*

ROCKWELL BLDG.
East Main St.

Thurs., Jan. 11	Cardinal Key Meeting Kent-Lakewood Club Banquet Canton Club Formed "Servant in the House"
Fri., Jan. 12	"Servant in the House"
Sat., Jan. 13	K. M. K. Dance—Moulton Hall All College Dance Kent-Muskingum Game—There
Sun., Jan. 14	Every one went to Sunday Skool
Mon., Jan. 15	Social Committee Meeting Weekly Stater Meeting
Tues., Jan. 16	Hans Merx—Baritone Band Concert (Assembly)
Wed., Jan. 17	Men's Union Smoker Y. W. C. A. Hat Gear Party
Thurs., Jan. 18	Youngstown Club Meeting Cleveland Club Meeting
Fri., Jan. 19	Alpha Sigma Tau Private Dance Velvet Curtain Meeting
Sat., Jan. 20	Kent-Baldwin Wallace Wrestling Lowry Formal Dance
Sun., Jan. 21	
Mon., Jan. 22	A. A. U. W. Meeting
Tues., Jan. 23	Examinations
Wed., Jan. 24	Examinations Kent-Akron Game
Thurs., Jan. 25	Examinations No Paper
Fri., Jan. 26	Examinations
Sat., Jan. 27	Every One Went Home as Usual
Sun., Jan. 28	Every One Came Back for Monday Classes
Mon., Jan. 29	Registration
Tues., Jan. 30	Second Semester Begins
Wed., Jan. 31	Every One Objects to Going to Class

The college officially welcomed 1934 with Lady New Year (Martha Holbrook) dressed in flowing white and Father Time (Lower Kellogg) dressed in black. The dance was attended by 1200 students.

For the first time in the history of Kent State admission was charged to an All Greek dance which was in keeping with a rule passed by the Student Council.

Al Shambargar, veteran dramatist, took the lead in the "Servant in the House."

The Greek letter organizations start to frolic when the Delts and K. M. K.'s held their pledge dances, Alpha Sigma Tau their private. January marked the month for the Lowry formal.

The home town organizations continued to attract attention and this month all the loyal Cantonites banded together and added heir club to the list.

The end of the month rolled around (all too soon for some) with one of those famous "exam weeks"—something new at Kent—what an ordeal!

But in true Kent spirit the students flocked back for registration day and the new semester commenced before the new month was underway.

The
F. W. Orth
Company
Cuyahoga Falls, Ohio

CATALOGUES

BOOKLETS

FOLDERS

COLOR WORK

We'll See
You at
The
**CAPTAIN
BRADY**

on the
edge of the
campus

Main and Lincoln Streets

Compliments of
W. W. REED & SON, INC.
INSURANCE — ALL FORMS

Phone 522

141 E. Main St.

**COMMERCIAL
PRESS**

138 East Main St.
Kent, Ohio

Courier Tribune Building
G. E. Marker, *Proprietor*

**BUSINESS AND SOCIAL
PRINTING**

The
**CAMPUS
SUPPLY STORE**

A Store for
Kent Staters
Supplying
Every
Student
Need

Our services include
Typewriter Repair
Typewriter Rental
Fountain Pen Repair
Stationery Engraving
Kodak Finishing
Postal Sub Station

On the Edge of the Campus

February

Thurs., Feb. 1	Lambda Chi—Pledging
Fri., Feb. 2	Sunset Dance—Moulton All College Dance—Gym
Sat., Feb. 3	Kent-Hiram Game Kent-Case Wrestling Meet Theta Sigma Epsilon Pladge Dance
Thurs., Feb. 8	Canton Club Meeting Ohio Valley Club Meeting Intra-Murals
Fri., Feb. 9	Kent-Capital Game—There Delta Sigma Epsilon All-Greek Dog Dance
Sat., Feb. 10	Pi Delta Tea—At House Basketball—Kenyon—There Kappa Sigma Chi Informal Party—Moulton Hall Wrestling—Mechanics of Rochester—Here
Sun., Feb. 11	Nice Day
Mon., Feb. 12	Council of Women's League
Tues., Feb. 13	Dr. Wishart of Wooster at Assembly Cleveland Club Meeting B. W. Basketball Game—Here Debate with Rollins College Cardinal Key Dinner at Robin Hood Pi Kappa Rush Party at Robin Hood
Wed., Feb. 14	Pan-Hellenic Meeting Y. W. C. A. Valentine Party—Off-Campus Room
Thurs., Feb. 15	Faculty Women's Bridge and Dinner at Robin Hood. Sigma Sigma Sigma Rush Party at Robin Hood Youngstown Club in Off Campus Room
Fri., Feb. 16	Moulton Informal Dance County Basketball Tournament Theta Sigma Rush Party at Robin Hood Debate Kent vs. Case—Off Campus Room
Sat., Feb. 17	Kenyon Here—Basketball Fenn—Wrestling—Here Summit Hall Valentine Card Party—Summit Hall
Sun., Feb. 18	Delta Sigma Formal Initiation at House
Mon., Feb. 19	College Social Committee
Tues., Feb. 20	Music Club Dance in Off Campus Room German Club Gym Meet with Akron Turners Alpha Sigma Tau Rush Party—Robin Hood
Wed., Feb. 21	Sigma Sigma Sigma Pledge Dance at Moulton Writers Club in Robin Hood
Thurs., Feb. 22	Delta Sigma Rush Party at House
Fri., Feb. 23	K. M. K. Dance at Moulton Phi Alpha Alpha Rush Party Tea Debate—Case—Off Campus Room County Basketball Tournament



BASEBALL SUPPLIES

GOLF — TENNIS — FISHING TACKLE

Northeastern Headquarters
For Everything In Sporting Goods

*Teams Should Call Bl.—3138
for Salesmen*

CENTRAL HARDWARE

200 South Main St.

Akron, Ohio

HART SCHAFFNER & MARX CLOTHING

Arrow
Shirts

D.H. Green
CLOTHING & SHOES
KENT, OHIO

Knox
Hats

WALK-OVER SHOES

Water Street — Kent, Ohio

We Wish to Extend Our
Appreciation for the Opportunity of
Serving the Many Organizations of
Kent State College

Portage Printing Company

EARL L. PLATT, *Proprietor*

637 South De Peyster Street, Kent, Ohio

Sat., Feb. 24	Hiram Here Wrestling—West Jefferson—Here Pi Delta Theta Rush Party at House
Sun., Feb. 25	Very Nice Day
Mon., Feb. 26	Princess Der Ling—Aud. at 8:15 P. M.
Tues., Feb. 27	Gym Meet with Akron U. Here Women's Debate with Capitol Big-Little Sister Dinner at Robin Hood W. A. A. Play Night in Gym Ohio Valley Club in Off Campus Room K. P. Club—Theater Party at Kent Theater

Alpha Sigma Alpha, the penalized group from last term, lead the sororities on a new rushing season and once again the unaffiliated women are partied and pampered.

An unusually popular sunset dance started the social ball rolling. It was sponsored by the Women's League.

Theta Sigma Upsilon, Tri Sig, and K. M. K. held private dances and the Delta Sigs entertained all the Greeks at their annual Dog Dance. Moulton hall held an informal dance.

Joe's wrestling team continued to floor all opponents and the Debate team was seldom silent.

The college threw open the gym to students and townspeople both when one of President Roosevelt's nation wide birthday parties was given here at Kent.

All the faculty relaxed on the 22nd in respect to a man who very considerably chose a busy month for a birthday.

New girls with their big sisters held a dinner get together at the Robin Hood.

The last assembly of the month saw Princess Der Ling, a famous writer, telling Kent students of her wonderful experiences.

March

Thurs., Mar. 1	Alumnae Chapter of Sigma Sigma Sigma Party at Robin Hood Biology Club Dinner and Party Pi Delta Theta Rush Party at House
Fri., Mar. 2	Wrestling—Case—Here Women's Club Benefit Bridge—Moulton
Sat., Mar. 3	Alpha Sigma Tau Formal Pledge Dance at Akron's City Club in Akron
Mon., Mar. 5	Student Recital in Aud.—8 P. M.
Tues., Mar. 6	Pres. Brown of Hiram in Assembly Women's Debate with Wittenberg in Aud. Women's Debate with Ohio U. German Club
Wed., Mar. 7	Bill Langell's Birthday
Thurs., Mar. 8	Celebration All Over
Fri., Mar. 9	Wrestling—Michigan State at Lansing
Sat., Mar. 10	County Basketball Tournaments
Sun., Mar. 11	Extra Special Nice Day

COSTUMES

For Kent Stage Performances
Supplied by

Emilie Sullivan Studios

52 East Rich Street Columbus, Ohio

Our list of patrons attests the quality
of our service, and reasonableness of
prices.

Compliments of

KNEIFEL GROCERY COMPANY

142 North Water St.

Phone 43 Kent, Ohio

Compliments of

AKRON TOWEL SUPPLY CO.

Everything in Linen

423 Wabash Ave.

Akron, Ohio

THE AKRON LAW SCHOOL

57 East Market St., Akron, Ohio

OFFERS

A four year course preparing for
Bar Examination and leading to
the degree of LL.B.

Ask for Catalog

DONAGHY'S Cut Rate Drug Store

A Complete Stock of
Toilet Accessories

Rybinstein

Cara Nome

Jonteel

Evening in Paris

Max Factor

Jasmine

Shari

*Our Cut Prices Will
Save You Money*

The Rexal Store

The Kodak Store

OFFICE SUPPLIES

SAFES

OFFICE FURNITURE
AND DRAFTING ROOM
EQUIPMENT

THE NATIONAL BLANK BOOK & SUPPLY CO.

36 N. Main Street

Akron

Ohio

Mon., Mar. 12	Women's League Council Men's Glee Club Concert—8:15—Aud.
Tues., Mar. 13	Social Dancing, Stater-Chestnut Burr Basketball Game
Wed., Mar. 14	Pan-Hellenic Meeting
Thurs., Mar. 15	Faculty Women's Club Supper at Moulton
Fri., Mar. 16	Wrestling—B. W. at Berea
Sat., Mar. 17	N. E. Ohio Conference Debate Tournament—Aud. and Class Rooms All Day Alpha Sigma Alpha Formal Pledge Dance—Moulton Hall
Mon., Mar. 19	German Club
Tues., Mar. 20	Assembly—Everyone Went to Sleep.
Wed., Mar. 21	Dean Manchester Invents New College Yell
Fri., Mar. 23	College Theater Informal—Moulton
Sat., Mar. 24	Delta Phi Sigma Pledge Dance
Tues., Mar. 27	Easter Cantata (Assembly)
Wed., Mar. 28	Men's Intra-Mural Gym Meet
Thurs., Mar. 29	Spring Recess Vacation

This month all enterprising sorority girls go back into routine after bids are accepted although two groups celebrate with pledge dances. Alpha Sigma Tau held their dance at the City club in Akron and Alpha Sigma Alpha held a real St. Patrick's day formal in Moulton March 17.

The windy month really witnessed a decline in social life with only two other dances during the month. Delta Phi Sigma held their pledge dance at Moulton which was also the scene of the College theater informal.

Just preceeding Spring Recess—an innovation with the semester plan—the Music department produced a beautiful assembly program in the form of an Easter Cantata.

And March 29th even the janitors have a few days' rest.

April

Sun., April 1	Vacation
to	
Sun., April 8	
Mon., April 9	Women's League Council
Tues., April 10	Concert in Akron—Maria Olszewka
Wed., April 11	Pan-Hellenic Meeting
Sat., April 14	Men's Intra-Mural Swim Meet—Pool
Wed., April 18	Ted Shawn Male Ballet
Thurs., April 19	Faculty Women's Meet
Fri., April 20	High School Play—Aud.
Fri., April 27	Junior-Senior Prom—Akron

With Spring in the air Kent students forget dances and parties and get out on the golf courses and in the country. That's what we assumed from the dearth in social activities. The only notable events were the Sigma Tau Gamma formal in the Hotel Hollenden Show Boat with Merle Jacobs the maestro, and the Junior-Senior Prom in Akron.

Compliments of

**THE
ROHNER PAPER CO.**

AKRON, OHIO

Complete Line of
School Items
Janitor's Supplies
Paper Products

Complete Cleaning of Homes
Our Specialty

25 Years of Experience

Financially Responsible

We Carry State and Public
Liability Insurance

Phone for Free Estimate—Je 2513

**Akron Window Cleaning
Company**

AKRON S. & L. BUILDING AKRON, OHIO

DRY CLEANING — PRESSING — REPAIRING
SHOE REBUILDING

KNIGHT SERVICE SHOP

Quality and Service — One Trial Always a Customer

107 Talmadge Road

Stow, Ohio

Walbridge 2244

STUDENT

THE KENT STATER

PAPER

PUBLISHED WEEKLY

KENT STATE COLLEGE

KENT, OHIO

Are You Willing to Forget?

Many of you will soon be leaving your college life at Kent to take up new phases of endeavor.

Your copy of the Chestnut Burr will constantly remind you of your happy days at Kent. Keep in touch with your college and its activities through the Stater.

A dollar and a half sent to the Kent Stater will bring you tidings each week for the next year.

May

Thurs., May 3	Physical Education Program
Tues., May 8	Music Week—Choral Concert
Wed., May 9	Pan-Hellenic
Mon., May 14	Women's League Council (Big Sisters) Chestnut Burr Staff Disappears
Thurs., May 17	Operetta Music and Speech Departments 1934 Chestnut Burr Appears
Fri., May 18	Faculty Women's Club Dinner (Twin Lakes)
Sat., May 19	Moulton Formal Dance
Mon., May 21	Student Recital
Fri., May 25	College Theater Sport Informal

The month of the annual campus night—when the townspeople gathered to see the students at their best—lighted lanterns, parades, and the huge dance. A glorious affair. With the Music and Speech departments claiming attention to their concerts, and operettas, the physical education department to their programs, Moulton hall to its formal, college theater to its sport dance—the Kentites find themselves rushed to keep up their social obligations and still respond to the call of the tennis courts, lakes, etc.—Such is the life of a collegiate!

June

Sun., June 3	Baccalaureate—Dr. Joel B. Hayden
Fri., June 8	Commencement—Dr. Herman Lee Donavan Alpha Sigma Alpha Formal

The glorious month—for the Seniors. While they practice for hours in preparation for the comparatively few minutes they spend winding up their college careers, the underclassmen are slaving with exams.

Several Greek Letter organizations terminate the year with formals — Alpha Sigma Alpha held theirs the night of commencement. And so another year at Kent—.

KENT STATE COLLEGE

James Ozro Engleman, Ph. D., LL. D.

President

COLLEGE OF EDUCATION

John L. Blair, A. M., Ph. D.

Dean

COLLEGE OF LIBERAL ARTS AND SCIENCES

Oscar H. Williams, A. M., Ph. D.

Dean

Approved by State Department of Education for teacher training in the following fields:

High School
Elementary
Kindergarten
Home Economics
Physical Education
Industrial Arts
Music
Commerce
Art

Member of the Ohio College Association

The American Association of Teachers Colleges

The North Central Association of Colleges and Secondary Schools

Low Cost
Beautiful Campus
Good Buildings and Equipment
Thoroughly Modern Library
Excellent Faculty

YOU KENT GO WRONG

Tell us not that fair young co-eds
Unprotected now must roam;
That a million dangers threaten
When they first set out from home.

Fear not parents, for your children
From the right they will not stray,
There are countless rules to keep them
In the straight and narrow way.

Life is real, but they're protected.
They may still stay innocent
If they join the ranks of students
Climbing up the hill at Kent.

They'll be warned to trust no fellow
When he offers them a ride
If he has no evening papers
In the pocket at his side.

And when studying is over
And for bed the girls prepare,
They must turn their boy friend's pictures
To the wall, lest they should stare.

Waltzes now are strictly business.
Gone are Cupid and romance
When half a foot of daylight
Stands between a pair who dance.

And an auto ride can cause no
Palpitations of the heart
When the parties both are sitting
On the seat a foot apart.

When the man a co-ed marries
Is the only one she's kissed
She may still be happy
For she won't know what she's missed.

But in spite of all these rulings—
Rules so kindly and well-meant—
There's one question still that puzzles
Why do men still date at Kent?

WAS IT YOU?

The soft rays of the moon dimly lighted the campus and on the steps of Science hall sat a young man and a lady. The evening air was pleasant and warm to feel. They were enwrapped in their thoughts when suddenly they were interrupted by the rays of a flash light. "What are you doing here," said the night watchman.

"We're preparing for a psychology test," replied the young man, as he winked at the young lady.

"Don't try to pull any funny stuff on me young man, you can't get away with it. What is your name, young lady?"

"My name's Mary Thomas," said the lady, in a weak voice.

"Don't be a sap, Mary. Never give a cop your correct name."

"Never mind young man, you can't pull any funny stuff on me. I can tell whether you give the correct name or not. What's yours?"

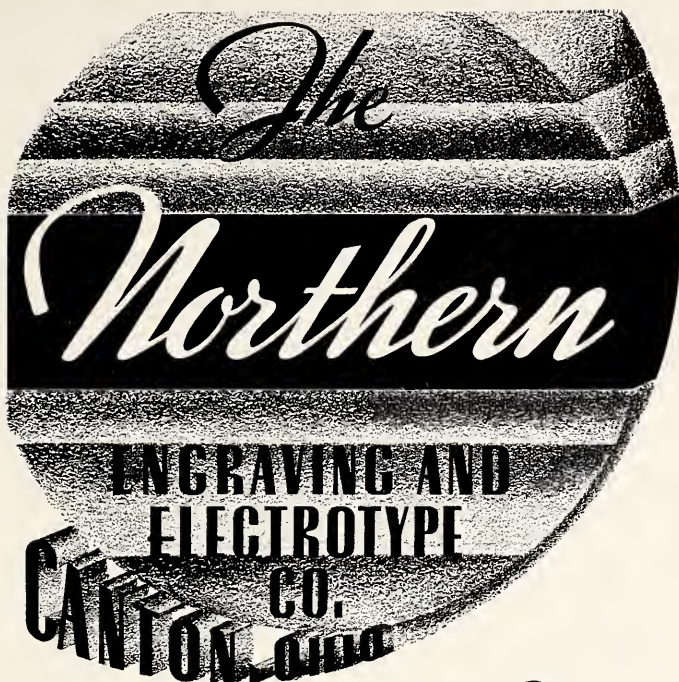
"In that case I might as well tell the truth. My name is George Harvey."

"Oh, no it isn't. If I get in trouble about being up here on the campus, it's your fault, Harry Wiles, and I'm not going to take all the blame," the young lady said, rather indignantly.

"That's all I need is the names, Harry Wiles and Mary Thomas. You can go now. Dean Verder will take care of the rest."

"Who's Afraid of the Big Bad Wolf," sang John and Ginny as they strolled away to a much less inhabited place.

"I'll make a note of that also," remarked the night watchman to himself as he wrote down the names. "Someone is going to catch hell."



CERTIFIED
THROUGH
SERVICE AND
QUALITY SINCE 1906

It was our privilege to co-operate with this annual board

WE WONDER - - -

- If Dr. Olson ever succeeded in breaking a black board with his finger?
Good luck, Doc, you certainly try hard enough.
- If Mr. Cunningham has only one necktie, or are they all red?
- If some kind hearted person will patch up the troubles between Dr. Palmer's pants and vest and bring them back together again?
- If Dr. Stelson's pants and vest are mad at each other also?
- If Mr. Pearce sticks his shoulders in his ears to keep from hearing himself laugh?
- If Dr. Stewart is absent minded or does he just forget?
- If Wagner does throw the test papers down the stairs and grade them according to the step they fall on?
- If it is true that Dr. Olson can say HUH loud enough to shake all the pictures on the wall?
- If you patronize our Advertisers?
- Why Dr. Garrett doesn't start a dating bureau?
- Who put the overalls in Missus Murphy's chowder?
- When Dean Verder will quit lecturing?
- If Joe Begala is any relation to his Grandfather?
- If the girls in Doc Roberts' classes are smarter than the fellows or whether the front row makes a difference?
- If Mr. Davey was ever embarrassed by history reports?
- If Mr. Greibling is sarcastic or whether he just has a peculiar sense of humor?
- What Mr. Pake would talk about in class if he hadn't been in the World War?
- Why Dr. Magee wouldn't make an expert tobacco chewer?
- Where Mr. Griebing stores all of his voice?
- When some of the professors will revise their lectures?
- When the janitors will get old enough to retire?
- How the students that have been stealing signs find space enough to enter their rooms?
- If G. J. Altman marches in his sleep?
- If Doc Rumold is a man of few words or doesn't he know very many?
- If Gus Peterka can bite?
- Who will win in the battle over Dr. Garret's affections?
- Why Dean Verder doesn't campus Dr. Brenneman for slipping in the back way at Moulton hall after ten o'clock?
- Why Dr. DeWeese doesn't get some round pills so the students could play marbles instead of inventing so many other games?
- What would happen to Doc DeWeese's pill business if someone removed the sugar coating?
- What the Night watchman does with all the fictitious names he collects?
- If Dr. Roberts ever won a game of checkers?
- If Miss Dunbar ever had a boy friend?
- If anyone ever wondered about these wonders?
- If Doc Stewart's head works better when he pats it?
- If the Janitor ever gets dizzy erasing the circles Dr. Blair puts on the black board?

Congratulations

to the Class of

1934

We sincerely hope that your
education will help you to choose
wisely, a calling in which you at-
tain success and happiness.

WE ARE THE
PRINTERS OF THIS
YEAR BOOK

The Painesville Telegraph

PRINTERS



46 North State St.

Phone 42

PAINESVILLE, OHIO

Autographs

