



*“And then the blue-eyed Norseman told,
A saga of the days of old.”*



THE
1931 ★ ★

C

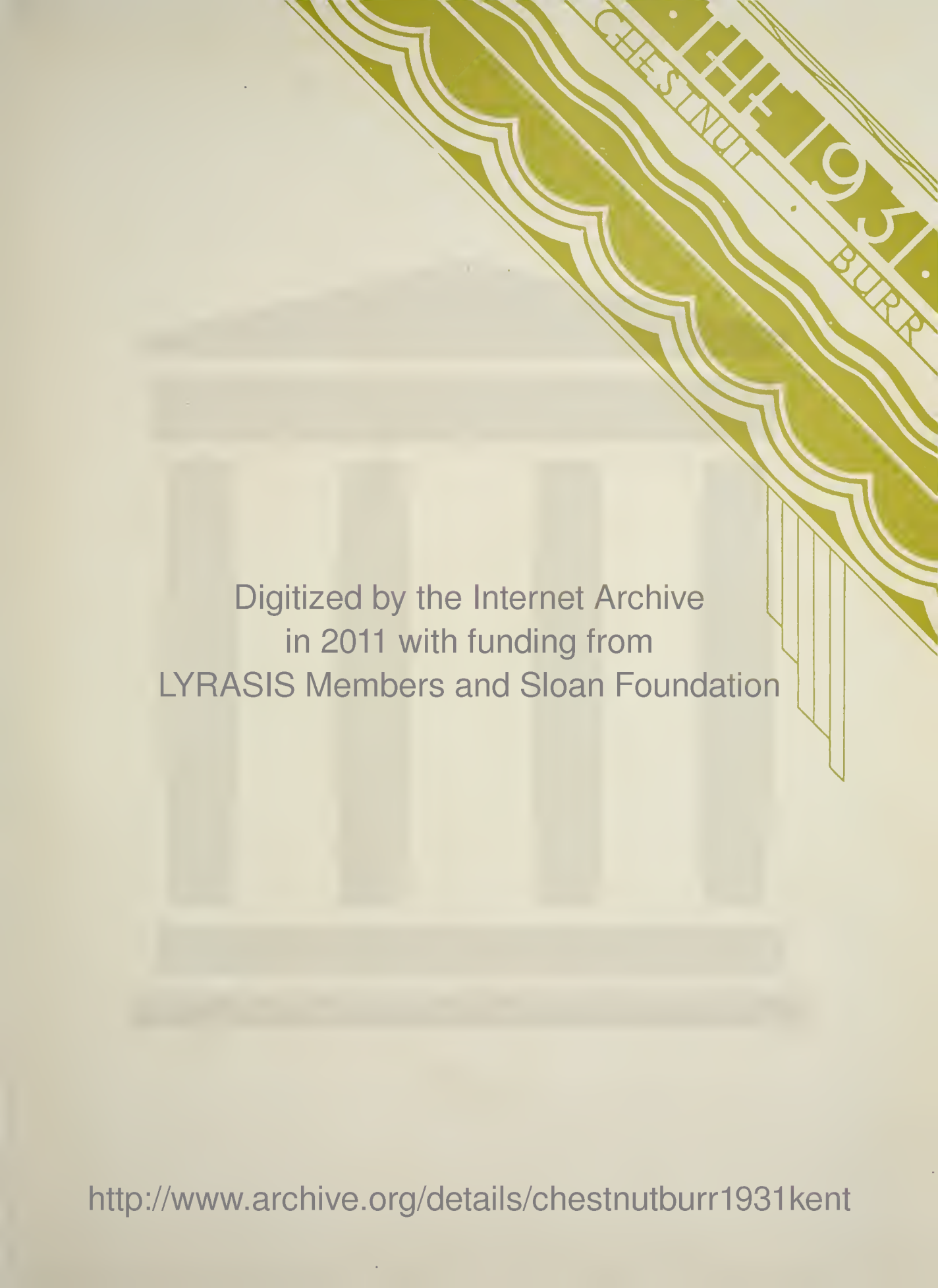
THUS-25-

PUBLISHED
BY THE ★
SENIOR ★
CLASS OF
KENT STATE
COLLEGE
KENT OHIO

B
U
R
R







Digitized by the Internet Archive
in 2011 with funding from
LYRASIS Members and Sloan Foundation

<http://www.archive.org/details/chestnutburr1931kent>



FOREWORD

This book is presented—to the students and friends of Kent State College—in the hope—that it may someday serve to recall—the pleasant incidents of that period of our lives—when we had little thought—for ought—but living.





CONTENTS

Views

Administration

Classes

Athletics

Activities

Fraternal Organizations

Features





DEDICATION

With sincere and heartfelt appreciation of the splendid services which he has rendered this institution, the Senior Class of 1931 dedicates this number of the Chestnut Burr to Doctor Amos L. Heer.





DR. AMOS L. HEER



















ADMINISTRATION







Class of Nineteen Thirty-One

Now that you are about to leave Kent State College, and therefore pause a moment here for my benediction, I gladly pronounce it.

May you ever grow in grace as well as strength of character; in wisdom and understanding not less than in knowledge of books; in love for children and in good will for all men and women whom you may reach even with your influence; in desire that shall equal your capacity to serve; and in health and vigor of body and mind, such that with length of days given unto you, service still be a source of supreme satisfaction to you, as it is to the College that helped to equip and inspire you for it.

JAMES OZRO ENGLEMAN





DR. JAMES OZRO ENGLEMAN
President





R. E. MANCHESTER, M. A.

DEAN OF MEN—MATHEMATICS

The history of mathematics shows an interesting series of changes from the time it was strictly utilitarian through the period when it was chiefly, "A handmaiden of Theology", to its present return to utilitarian uses.

Living, as we do, in an age of machines we find an increasing demand for courses stressing fact information and study of certain and logical conclusions from accepted assumptions. It is reasonable to find, therefore, that in our modern educational system mathematics holds an important place.

At present we offer a wide variety of courses to meet the needs of those majoring in our various departments. These range from methods for presenting fundamental number ideas to children in the Kindergarten to the highly technical courses for those looking forward to the scientific vocations.



BLANCHE A. VERDER, M. A.

DEAN OF WOMEN

Graduates of 1931—For you we trust college has been no "finishing school", but a place of real beginnings. If the opening of college meant the opening of your mind, if you have continued to welcome new truth, and ever to open your heart wider to friendship and your soul to the inflowing spirit, if the horizon of your entire being has widened, then for you college has been a successful adventure. Now as you leave the campus to enter into the unknown future, may you accept Robert Browning's challenge to "greet the unseen with a cheer."

*Now leaving all behind, facing to the dawn-
ing,
Sons of dear Kent State, welcoming the
morning,
Seekers of Light, go forth!
Heirs to the wisdom treasured through the
ages,
E'er scanning wisdom's book, searching thru
the pages,
Seekers of Truth, go forth!
So college days well done, moved by noble
vision,
Our commonwealth to serve, this shall be
your mission,
Seekers of Light and Truth.*





C. S. VAN DEUSEN, M.E.

MANUAL TRAINING DEPARTMENT

The aim of manual training is to develop thru actual participation in handwork, mechanical intelligence in all pupils, irrespective of their future vocations.

The above statement of the aim of manual training is the guide for this department. All grade room and rural teachers should take work in this department. They are the ones who should give an increasing amount of this work in the schools of the state and they should be prepared to use it in motivating other lines of school work.

The demand still exceeds the supply for men who can teach mechanical drawing, woodwork, metalwork, printing, simple mechanics, fiber cord work, etc., and the department aims to give a good preparation for such positions.



J. T. JOHNSON, A.B.

DEPARTMENT OF AGRICULTURE

In the long period of time covering social development agriculture was among the earliest vocations which was clearly defined. The intimate relation between continued existence and the food supply of people establishes a permanent and basic interest.

While the food getting activities are essential to satisfy human needs the vocation provides abundant opportunities to grow and mature in the higher levels of social and spiritual attainment. Agriculture is more than a vocation dealing with materials, it is a way of living.

Agriculture as a vocation because the daily activities are clearly associated with nature provides a body of experience of sound educational value. In viewing the subject of agriculture as a study of a mode of life economic values would obscure educational values. Since human aspirations transcend human needs the subject of agriculture is emphasized as means of education.





A. SELLEW ROBERTS, A.B., M.A., Ph.D.

DEPARTMENT OF HISTORY AND SOCIAL SCIENCE

The Department of History and Social Science has a two-fold aim. On the one hand it attempts to give to the prospective history teacher that sound and thorough grasp of the subject matter involved without which success as a history teacher is impossible. But on the other hand the department aims to help the general student to the cultural background which will enable him to live a well-rounded life and make him a more useful citizen. Through the medium of history the student learns to know the great writers of the past, to become acquainted with the great thinkers such as Plato, Aristotle and Descartes, and to watch the growth of science from Archimedes through Roger Bacon to the wonders of the present. Through history and its sister sciences, government, sociology and economics, the student watches the whole stream of human progress from the pyramids to the present and cannot help being the richer and the better equipped for his life work thereby.



EDGAR A. PACKARD, M. A.

THE ENGLISH DEPARTMENT

The year 1930-1931 has been made outstanding in our English department by the addition of new teachers, new courses and a much larger enrollment. Professor Satterfield has been absent on a year's leave of absence while working on his doctorate at Columbia. Buryl F. Engleman has substituted for him. Mr. Engleman has also had charge of the Kent Stater. He has been assisted by the Editor, Harold Jones, and they have greatly improved that publication. Professor Stump has been added to take care of the speech subjects. The college, under his tutelage, has been able to place high in inter-collegiate debating. Professor Bross has been added to assist Professor Pake with the Freshman work. Dr. Burner of the History department has had one class in English throughout the year and Miss Mays has had charge of the sub-freshman classes.





NINA S. HUMPHREY

DEPARTMENT OF ART

The art needs of the Child, the Community and the State as given by the Art Director of a neighboring state offers us a clear objective for the work of the Art Department.

First—All need sense training and a fine discrimination in the selection, the purchase, and the use of manufactured articles for the person and the home. These may be described as 100% needs.

Second—The community needs citizens who desire attractive homes, beautiful yards, parks, playgrounds, school buildings, museums, monuments, and all that contributes to civic beauty and civic pride.

Third—The merchant needs salespeople with fine taste and sound aesthetic judgment, beautiful show windows, and attractive advertising, for these will "sell the goods".

Fourth—The manufacturer of textiles, wall paper, carpets, rugs, furniture, pottery, glass, silverware, jewelry, lighting fixtures, and art metal products requires designers and artistic craftsmen who will make these products ever more beautiful and attractive.

Fifth—The printing industry requires illustrators, designers of book and magazine covers, artistic magazines and poster advertising, and attractive labels for toilet preparations, food containers, etc.

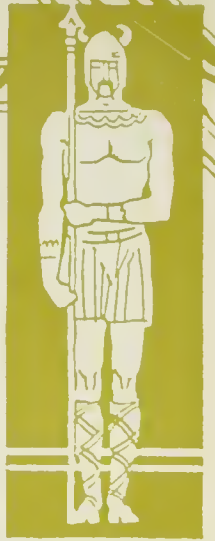
Sixth—The State requires painters, sculptors, architects, and museum directors. It requires teachers and supervisors of art for its elementary and secondary schools, for its colleges and universities.



D. W. PEARCE, A.M.

DEPARTMENT OF EDUCATION AND PSYCHOLOGY

The Department of Education and Psychology is striving diligently to base its psychology firmly upon modern conceptions of biology. If it can succeed reasonably well in this, notable contributions may be made to the profession of teaching through the discovery and formulation of principles upon which methods of sound teaching procedure may be based. In our basic courses in Principles of Education cognizance is taken of the changing needs of an industrial and economic civilization. The resulting conception of the aim of education is not, therefore, some antiquated view long since discarded, but one fitted to present progress. In our courses in Organization and Management the attempt is made to put our students abreast of the times in modern theory, yet by no means, to leave them in a wilderness of "ologies" and "isms". As far as possible we desire that our students shall go out to their fields of labor with a realization of the tasks to be done, and a practicality that shall enable them to accomplish them successfully.





EDITH BELLE ROWLEN, A.M.

FRENCH DEPARTMENT

What have been the findings of the Modern Foreign Language Study? To stress greatly the advisability of having the emphasis in teaching placed upon training students to read as soon as possible. To urge this necessity even more in case the language is begun in college.

Since the work of the French Department is planned to conform to these principles, it is possible very early in the course for students to begin to appreciate the spirit of France by seeing for themselves how national traits, characteristics and problems are viewed by some of the literary geniuses of that country. Further progress increases the number of these points of interest and comparison. Time honored and modern writings open up new fields and interpretations of history, literature, science, art and travel. So one may dwell at home, but live beyond the seas.



DAVID OLSON, M.Sc., A.B.

DEPARTMENT OF GEOGRAPHY AND GEOLOGY

How big is your world? How far does your imagination soar? How deep does your understanding penetrate? To what extent is your mind unshackled from superstition and prejudice? The answer to these and many questions like them are functions of your geographic study and reading. Even to know where the places one reads of are, what their climate is and how they are peopled, is something; but in its wider meaning, as the science which aims at the explanation of the adjustment of man to his surroundings, there is no problem in past history or of present politics and economics which cannot be elucidated by the applications of the principles of geography.





A. O. DeWeese, M.D.

DEPARTMENT OF HEALTH AND PHYSICAL EDUCATION

The Student Health Service of Kent State College is organized upon the three following assumptions:

1. That educationally it is now generally recognized that health is a fundamental factor in training and preparation for citizenship since the health of the boy and girl materially determines endurance, disposition and attitude, and endurance, disposition and attitude vitally affect happiness and efficiency.

2. That in the training and preparation for citizenship the school is as much responsible for the preservation and protection of the child's health and development of his physical efficiency and well-being as it is in the guidance and training of his mental attainments.

3. That an abundance of radiating health and physical well-being is of more importance to the class room teacher than in an individual in any other profession, since an example in well-being is an incentive of greatest importance in Health Education, and an unhealthy teacher cannot be in complete sympathy with the attitude and disposition of live, healthy, out-door-minded boys and girls.



BERTHA L. NIXON, M.A.

DEPARTMENT OF HOME ECONOMICS

The students welcomed the return of Bertha L. Nixon last year, head of the department, who had been absent on a year's leave which included study at Columbia and a summer's travel and study in Europe.

Miss Nona Isabel Jordan is the clothing specialist. She is a graduate of Drake University and Columbia.

While the primary purpose of the department is the training of teachers of home economics we are anxious to serve the ever increasing numbers of general students who are becoming more and more interested in the various phases of home economics. Several new courses have been introduced and a new minor for the general students has been added to the curriculum.

Through the efforts of the students in the department the administration has sponsored a practice house for the major and minor students of home economics. Six students and a faculty representative enjoy the comforts of home along with its responsibilities.





FLORENCE M. SUBLETTE, B.S., A.M.

DEPARTMENT OF MUSIC EDUCATION

Since September, 1927, there has been much expansion in this department. Two full-time instructors, one in the College and one in the Training School, aided by part-time instructors in piano and voice, formed the staff of 1927. September, 1928, saw the addition of one instructor, Mr. Steere; and with September, 1929, came two more, Miss Littlejohn and Mr. Metcalf. The present staff is composed of five full-time instructors and a part-time instructor in voice. One room was used by the department in 1927. Since then we have grown until four rooms are necessary to provide for our activities. With new teachers and new equipment has come the opportunity to offer not only a major and a minor in the department but to take our places alongside some of our sister colleges in offering a four-year degree course in Music Education. In this one year more than a dozen students have enrolled in the department for these advanced courses. We realize that with this growth come new responsibilities. May we ever do more to make music a vital part in the life of this community, and through teachers who are keenly alive, may reach the hearts of children and thus have a widespread influence throughout all of north-eastern Ohio.



A. L. HEER, A. B., M. A., Ph.D.

TRAINING SCHOOL

The training department at present is responsible for the courses in observation and in practice teaching. It is the purpose of the course in observation to integrate the various principles taught in psychology, classroom-management, and methods, and give them meaning by observing teaching and learning. It also aims to give the prospective teacher an opportunity to use these principles in analyzing teaching and learning in the classroom as a preparation for actual teaching. It is here that the prospective teacher attempts to apply principles in actual teaching and learning situations. Here the teacher is directed in acquiring those classroom procedures which are effective in teaching.

Not all of the practice teaching is being done in the campus training school. At present the elementary schools in the City of Kent and the Franklin Township schools are being used for practice teaching. This year a supervisor has been added to the training school faculty who supervises the practice teaching done in off campus schools.





C. F. RUMOLD, A.B., LL.B.

DEPARTMENT OF PHYSICAL SCIENCES

The Department of Physical Sciences at Kent State College offers in regular courses 102 term hours in Chemistry and 30 term hours in Physics. In addition special courses are arranged for students who have the necessary preparation for profitably pursuing the work. Students who are working off pre-medical or engineering requirements here find exactly the work they need. The earlier courses are presented with emphasis on the method of teaching these fundamental sciences. It is intended to give in these courses the training in the presentation of the facts and principles which will equip one for successfully teaching these sciences in the high schools. Those students who are looking forward to careers in the applied sciences will find in the more advanced courses work equivalent to similar courses in the colleges and universities. Laboratory facilities are unexcelled and much emphasis is given to individual laboratory work.



G. HAZEL SWAN, B.S.

KINDERGARTEN-PRIMARY DEPARTMENT

It is very gratifying to announce that the Kindergarten-Primary Department now has twenty-two students registered for three and four year work.

All of these students are active members of the Kindergarten-Primary Club which was organized in February, 1929. The aim of this group is to help in every way possible the Nursery - Kindergarten - Primary causes or the work with young children. The club has a number of interesting plans for the year to render service.

This student club is a branch of The International Kindergarten Union and is one of a few student branches belonging to the international body. Last May the club sent two delegates to the international meetings at Rochester, New York. This year it is sending one to Memphis, Tennessee.

It is the hope of the department that another instructor may be added soon so that all the courses of the department may be given to keep this fine, earnest group of twenty-two young women.





MARGARET DUNBAR, B.L.

THE LIBRARY

During the last week of August, 1929, the library of Kent State College was moved from the Administration Building where it had had its home for twelve years to the new David Ladd Rockwell Building which had been especially designed and built to house it and to provide a pleasant place in which it might be used.

The building has proved well fitted to the purpose for which it was planned and dedicated; its beauty is a joy to every student; its proportions, colors, ample light, heat, ventilation, and noiseless floors unobtrusively give comfort and pleasure to everyone who uses it.

The library, now numbering over forty thousand volumes, is growing to meet the new requirements of the College and with adequate appropriations which will be made from time to time will be able to meet the needs of students in all courses and to supply also recreational reading.



H. A. CUNNINGHAM, B.S., M.A.

DEPARTMENT OF BIOLOGY

There are many big themes in biology; one of which is the "Behavior of Organisms". Human education, since it deals with ways and means of modifying the behavior of conscious human beings, is really one subdivision of biology. Every one should be interested in making a superior adjustment to his environment; in adjusting his environment to himself; and in understanding, and influencing, at times the behavior of others.

The prospective teacher is immediately interested in biology as a fundamental aid in the solution of classroom behavior problems and "as an introduction to such subjects as hygiene, nature study, physical education, psychology, and child study." Biology is prevocational to such other occupations as agriculture, dentistry, medicine, forestry, etc., because these occupations are based upon fundamental laws and principles of biology.





J. E. MAGEE, M.A., D.C.L.

DEPARTMENT OF COMMERCE AND FINANCE

The modern business world is based upon a money economy. As our country becomes more industrialized, business forges ahead more and more as a distinctive field. In fact business is showing signs of becoming a profession. To meet these new conditions scientific training is mandatory. The old apprenticeship system required too much. It was inefficient in that it lacked standardization which is necessary in modern mass production.

Again, the old education was largely cultural. It was for the gentleman. Today one must commercialize his education. In other words it must make him a living. Then it is imperative that one be specifically qualified to do something well.

For these reasons a commercial education should receive the serious attention of every young man and young woman in choosing their life work. It may be used in the profession of teaching or in a business career. In either case a college training in business is a gilt-edge investment and opens up limitless opportunities professionally and financially.



EMMET STOPHER, A.B., A.M.

DEPARTMENT OF TEACHER-PLACEMENT AND EXTRA-MURAL ACTIVITIES

The activities of this department may be classed as:

1. Teacher-Placement
2. Supervision of recent graduates in the field
3. Directing home study department
4. Arranging for extension class centers
5. Alumni activities
6. Field relations

During the spring and summer terms, a very large part of the time is given to a survey of teaching needs and a study of the qualifications of candidates. All members of the present graduating class are urged to enroll with the Teacher-Placement Bureau. Its advice and help is available also to former graduates and undergraduates.

An effort is made to make a continuous check-up on graduates. It is hoped that the college will be able to publish a directory of all graduates some time next year.





MERLE WAGONER, B.S. in Agr.

HEAD COACH

I believe that the year 1931 will go down in the athletic history of Kent State College as the one of greatest achievement. While our teams have made a creditable showing in competition, our greatest achievement has undoubtedly come through the efforts of the Athletic Committee in obtaining a membership in the Ohio Athletic Conference of Colleges. Early in October, 1929, Dr. De Weese and Mr. Davey attended a meeting of this conference and presented our case, with the result that we as a College were granted the customary probationary membership of one year, after which we automatically became a member in full standing. This Conference is composed of a group of Colleges such as Akron, Mt. Union, Hiram, Oberlin, and other leading Colleges of the state, which have organized for the advancement of the type and quality of intercollegiate athletics in the State of Ohio. This means that for the first time in its history Kent State College has an athletic eligibility rule, the one year residence rule, and, above all, competes with other Colleges in this district and state on an equal footing.





MR. PAKE



MISS MEYER



MISS GOWANS

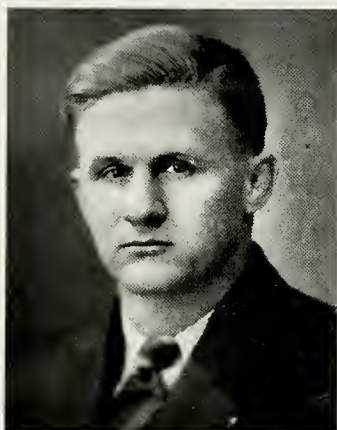


MR. ALTMANN



MR. METCALF





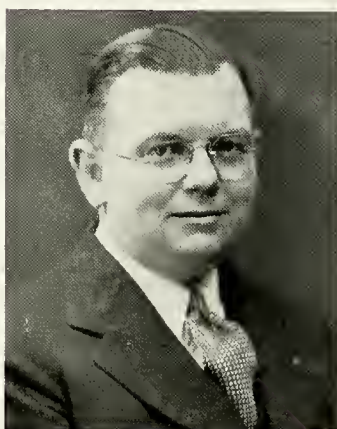
MR. BEGALA



MR. HELTER



MR. HARBOURT



MR. RENKERT



MR. MUSSELMAN





DR. STEWART



MR. McVEY



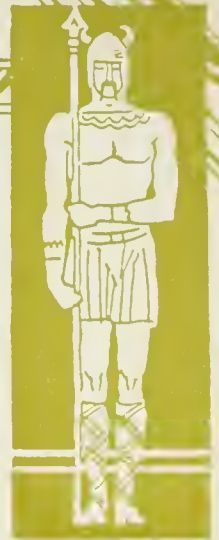
MR. FRANCIS



MR. DAVEY



MR. BECK

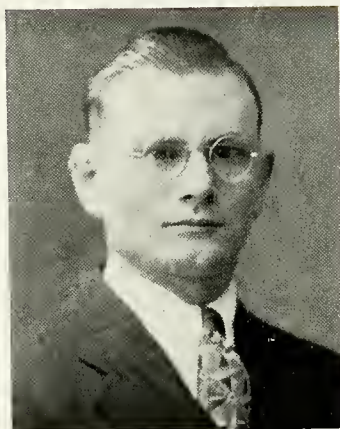




MISS THURSTON



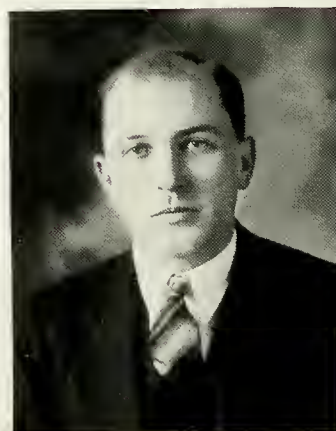
MR. HARSH



MR. MEYER



MISS SMITH



MR. STEER





MR. DAMANN



MRS. BONSALE



MISS VANNER



MRS. APPLE



MISS KOEHLER





MISS HYATT



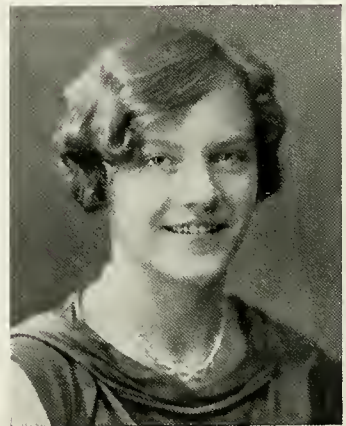
MR. SATTERFIELD



MISS HERRIFF



MISS FLETCHER



MISS COSTLEY





MISS STRAIGHT



MISS FENTON



MISS FREEMAN



MISS KING



MISS RICHARDS





MRS. IRWIN



MRS. FELLERS



MISS PARSONS



MR. CLARK



MISS DUNBAR





MISS HAZEN



MISS LINK



MISS BAUCHMAN



MR. BROSS



MISS JEFFREY





MISS SHEPHARD



MR. ENGLEMAN



MR. STUMP



MISS ADAMS



MISS PHILLIPS





MR. NOBLE



MISS PARRISH



MISS BROADBENT



MR. COOK



MISS SCOTT





MISS MILLER



MR. GRIEBLING



MISS THRASHER



MISS SWAN



MISS FOSTER





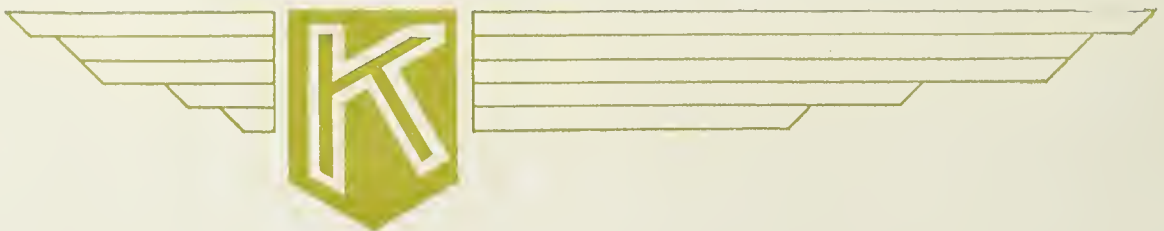
MISS BOSWELL



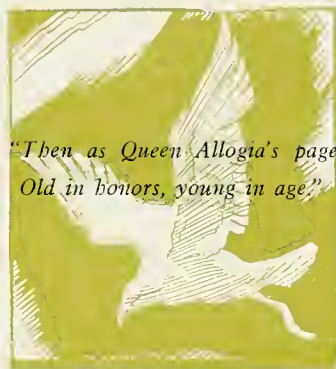
MISS SHAW



CLASSES



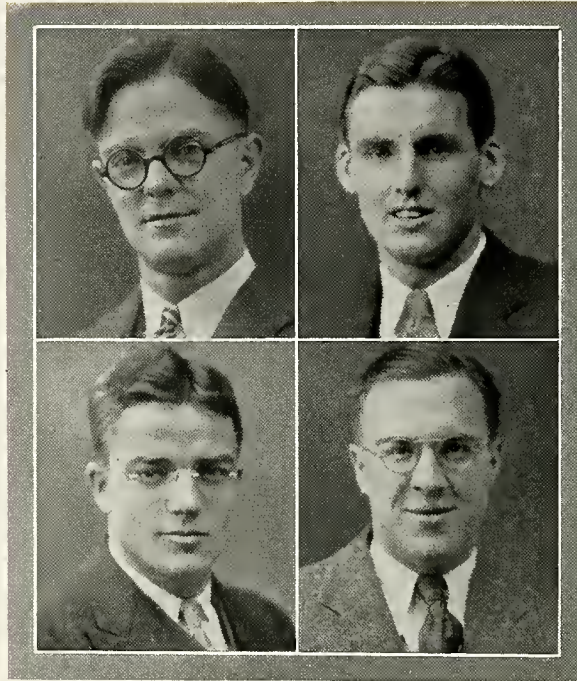




*"Then as Queen Allogia's page,
Old in honors, young in age."*



SENIORS



Senior Class Officers

<i>President</i>	- - - - -	WATT BAIR
<i>Vice-President</i>	- - - - -	GEORGE WARMAN
<i>Secretary</i>	- - - - -	ELDON SCOUTTEN
<i>Treasurer</i>	- - - - -	JAMES HOLM



ELDON F. SCOUTTEN

Hudson, Ohio

Delta Phi Sigma, Secretary 3, President 4; Interfraternity Council, President 4; Chestnut Burr 2, 3, Editor 4; Junior Class President; Senior Class Secretary; Homecoming Play 3; Interclass Debate 1, 2; Varsity Debate 2, 3, 4; Captain 4; Alpha Psi Omega; Chi Pi; Kent Stater 1, 2; Student Manager College Theatre; Chemical Essay 1, 2, 3; Melting Pot 4.

JAMES N. HOLM

Kent, Ohio

Delta Phi Sigma, Secretary 2, Historian 3, Vice-President 4; Alpha Psi Omega, Worthy Director 4; Varsity Debate 2, 3, 4; Interclass Debate 1, 2; Chestnut Burr 2, 4; Business Manager 4; Homecoming Play 1, 2; Interfraternity Council 3, 4; Freshman Class President; Senior Class Treasurer; Social Committee 3, 4; Executive Council 4; Best Junior Man Student 3; Chi Pi; Senior Prom Committee 4; College Theatre Managerial Board.

JOANNA THOMAS

Cleveland, Ohio

Women's League.

FRANCES TYLER

Lockwood, Ohio

Women's League.

PHILLIS M. BARRY

Ravenna, Ohio

Delta Phi Sigma; Vice-President and President 2; Interclass Debate 1, 2; Varsity Debate 2, 3, 4; Student Council 2; Men's Union Board 3; Football 4; Chestnut Burr 2, 3, 4; Melting Pot 4.

ARTHUR STEJSKAL North Olmstead, Ohio

Delta Phi Sigma, Sergeant at Arms 4; Ashland College; Football 2, 3, 4; Wrestling 2, 3, 4, Captain 4; State 175 lb. Champion 3; State Heavyweight Champion 4; Basketball 3; Men's Chorus.

WILLIAM BROZ

Mayfield, Ohio

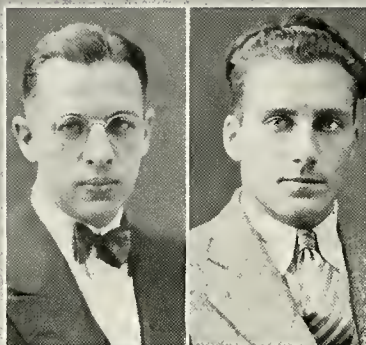
Delta Phi Sigma, Treasurer 2; Wrestling 3, 4; Men's Union; Men's Chorus.

CECIL HAMILTON

Fresno, California

Independents; Y. M. C. A.





DWIGHT BROCKLEHURST

Men's Union.



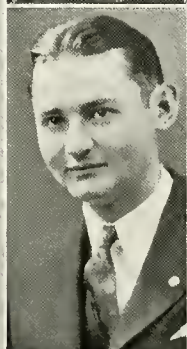
HARLAND SICKMAN Mayfield, Ohio

Kappa Mu Kappa; Basketball 3, 4; Baseball 1, 2, 3; Football Manager 2; Men's Chorus 1, 2.



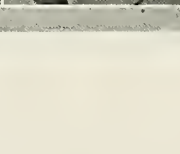
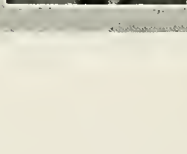
ARTHUR PEEBLES Cuyahoga Falls, Ohio

Delta Phi Sigma, Historian 4; Kent Stater 2, 3, 4; Men's Chorus; Men's Union; Social Committee; Executive Board 4.



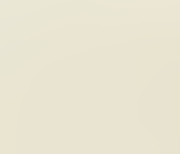
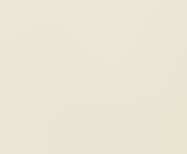
L. W. LUCAS

Men's Union.



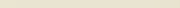
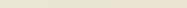
VELMA ROOD

Women's League.



MILDRED MORGAN

Women's League.



WALTER SHAMMO

Orrville, Ohio

Independents, Secretary-Treasurer 4; Y. M. C. A. Council 3, President 4.

CLARENCE GEHRIG

Millersburg, Ohio

Ohio State University; Men's Union.



GEORGE McCAGUE New Springfield, Ohio

Wooster College; Sigma Tau Gamma; Y. M. C. A.
2, 3; Intramural Athletic Council 3; Mack's Swim-
ming Team.

EDITH TRAFIZER

Women's League

MARJORIE BRIGSTOCK

Kent, Ohio

LELAND KELLER

Brady Lake, Ohio

Men's Union

WILFRED SLATER

Nova Scotia

Independents, President 4; Y. M. C. A.; Mack's
Swimming Team.

HELEN THORPE

Ravenna, Ohio

Women's League

EDNA TRINTER

Vermilion, Ohio

Mathematics Club, President 4

GLADE BOWMAN

Freedom, Ohio

Sigma Tau Gamma; Men's Union; Chemical Essay
Contest; Student Laboratory Assistant.





PANSY BRITTAIN
Women's League



JEAN LEAVENWORTH Defiance, Ohio
Glee Club 1, 2, 3; "Rosamunde", "Pirates of Pen-
zance"; "Patience"; Kindergarten Primary Club,
President 2, 3.



CHARLES DUNN Stow, Ohio
Delta Phi Sigma; Men's Union Board 4; Editor
Kentonian 2, 3; Varsity Tennis 2, 3; Kent Stater
4; Chi Pi 4.



LILLIAN FLOWER Kent, Ohio
Freshman Class Secretary; Sophomore Class Sec-
retary; O. C. W. C. Secretary 3.



WATT BAIR Kent, Ohio
Ohio Wesleyan University; Sigma Tau Gamma;
Treasurer Junior Class; Senior Class President.



ELLIS MILLS
Men's Union.



LUCILLE TRUSCOTT Kent, Ohio
Sigma Sigma Sigma; O. C. W. C. Treasurer 3;
President 4; Kindergarten-Primary Club, Secre-
tary 4.

GRACE McMASTER Salem, Ohio
Women's League.



ELEANOR STONE

Atwater, Ohio

Best Student 1, 2, 3, 4; Phi Alpha Alpha, President 4; Y. W. C. A., Secretary 4; French Club, Secretary 4; Mathematics Club 4; O. C. W. C., President 4; Chemical Essay Contest

CATHERINE WALKER

East Liverpool, Ohio

Lowry Hall, President 3; French Club; W. A. A.; Phi Alpha Alpha; Y. W. C. A.; Women's League Cabinet, O. C. W. C.

LOREN JONES

Kent, Ohio

Independents, President 3; Men's Union.

NINA LOWER

Ravenna, Ohio

Women's League; W. A. A.

ELIZABETH LUDT

Pi Kappa Sigma, President 4; W. A. A.; Women's League.

LEO LOWER

Ravenna, Ohio

Delta Phi Sigma; Men's Union; Mack's Swimming Club; Chestnut Burr 4.

CLYDE SUTHERLAND

Men's Union

JANE LEAVENWORTH

Defiance, Ohio

Bowling-Green College; Glee Club 2; "Patience".





MARIAN FLOWER

Kent, Ohio

Freshman Class Treasurer; Sophomore Class Treasurer; O. C. W. C.; Junior Class Social Committee.

MAYME PUCCI

Women's League.

GORDON KELSO

Ravenna, Ohio

Kappa Mu Kappa, President 4; Basketball 1, 2, 3, 4; Interfraternity Council 4.

LUCILE HILL

Women's League.

VELMA LEEPER

Kent, Ohio

Women's League.

GEORGE WARMAN

Windham, Ohio

Delta Phi Sigma, Treasurer 3; Most Popular Man 4; Homecoming Play 2; Orchestra 1, 2, 3, 4; Band 1, 2, 3, 4; Men's Chorus 1, 2, 3, 4; Alpha Psi Omega; President Men's Chorus 4; Varsity Tennis 4; Baseball 3.

E. E. MURPHY

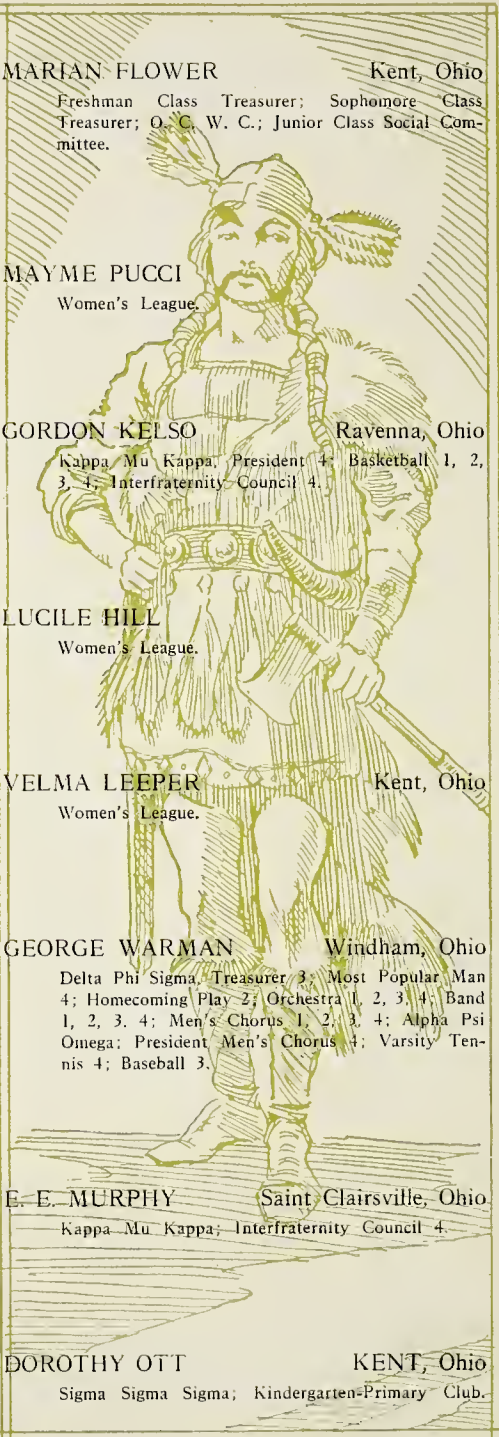
Saint Clairsville, Ohio

Kappa Mu Kappa; Interfraternity Council 4.

DOROTHY OTT

KENT, Ohio

Sigma Sigma Sigma; Kindergarten-Primary Club.



GOMER LEWIS Cuyahoga Falls, Ohio
Kappa Mu Kappa; Basketball 3.

MILDRED LEIBOVITZ Akron, Ohio
Phi Epsilon; President 4; O. C. W. C.; Pan-Hellenic; Secretary; French Club; College Theatre.

MARIE FOLEY Hubbard, Ohio
Youngstown College; Glee Club; W. A. A.; Y. W. C. A.; Miami University.

TED SAPP Kent, Ohio
Kappa Mu Kappa; Football 1, 2, 3, 4; Basketball 4.

FRANCIS MULL
Men's Union.

GRETA WOOLF Ravenna, Ohio
Western Reserve University; O. C. W. C.; Women's League.

VELMA LEEPER Kent, Ohio
Women's League.

ROY OBER Kent, Ohio
Men's Union; Wrestling 4.





PAUL BRAND Strausburg, Ohio
Kappa Mu Kappa; Men's Union.

MARIAN PALMER Hudson, Ohio
Sigma Sigma Sigma, President 4; O. C. W. G.
Women's League; Kindergarten-Primary Club
President 2.

DOROTHY SOUTHERBY
Women's League.

LESTER HOSTETLER
Men's Union; College Theatre.

VERNON MOYER Streetsboro, Ohio
Men's Union; Miami University.

HALLIE MAJOR
Women's League.

EVELYN STAIR
Women's League.

CHARLES KILBOURNE Kent, Ohio
Kappa Mu Kappa; Football 1, 2, 3, 4; Basket-
ball 1, 2, 3, 4; Baseball 3.



LESTER SABIN

Randolph, Ohio

Delta Phi Sigma; Social Committee 3; Vice President Sophomore Class; Senior Prom Committee 4; Men's Chorus 4.

ALMA HELMING

E. R. WHITE

RALPH UNDERWOOD

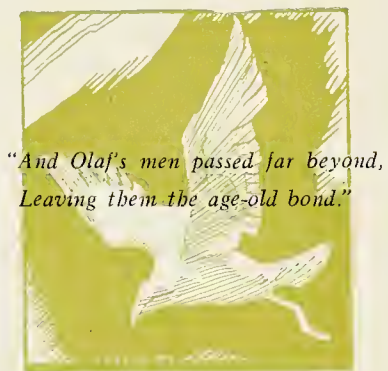
ORA JANKE

EVELYN MERRILL

ROBERT CUSTER

O. A. REINKE

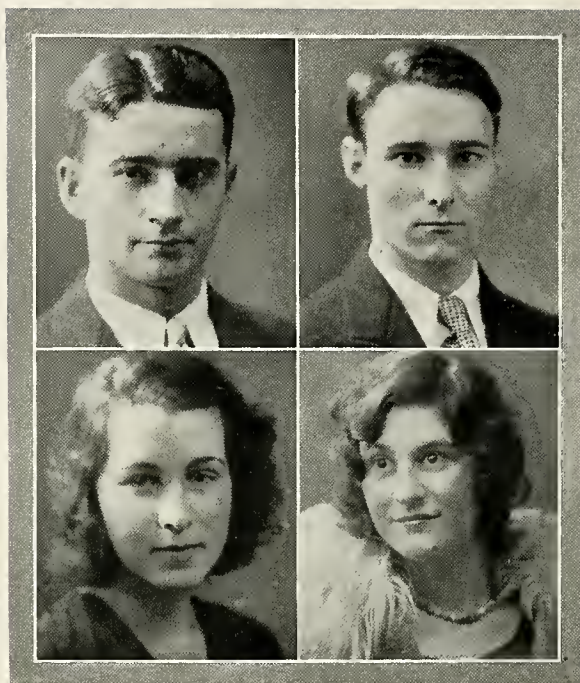




*"And Olaf's men passed far beyond,
Leaving them the age-old bond."*



JUNIORS



Junior Class Officers

<i>President</i>	- - - - -	CLYDE HALL
<i>Vice-President</i>	- - - - -	WILLIAM SPRAGUE
<i>Secretary</i>	- - - - -	MARY DONZE
<i>Treasurer</i>	- - - - -	THELMA STAMBAUGH





FLORENCE HECOCK

FRANK MCCASLIN

ADA MAE TAYLOR

MABEL WILLIAMS

ALICE CHASEY

ADOLPH SCHANDEL

MILDRED CALL

ERNEST JULIUS

ELSIE MARXEN





ALBERTA STATTS

EDWARD
SPINNEWEBER

ARGIA RUFFER

ELMER PETTAY

DOROTHY COOPER

EDWARD HARRIS

MARY LOSSEE

DONALD ROBINSON

KATHRYN MYERS





MABEL COBB

CHARLES HICKSTEAD

HATTIE SCHNIEDER

FRED DREW

MARGUERITE OYLER

JAMES EATON

LUCILLE TARR

HARLEY SEISS

HELEN BUNN





ERNEST POLLITT

JEANNETTE WHEELER

RALPH MCGINNIS

MARIAN LOSTETTER

HERALD MOORE

FLORENCE SHADER

MARION HUNTER

DOROTHY STADLER

ORRIN SMUCKER





HAZEL GREER

CLYDE HALL

VIRGINIA JOHNSTONE

LUCILLE EWELL

GENEVA BRAND

CATHERINE CONROY

EDWARD
DOBRANETSKI

LEATHA BULLOCK

MERRILL MILLS





CORNELIA STEWART

BOYD MILLER

LOUISE KIST

PAULINE PARDEE

EVA JOHNSON

ALICE HINDS

MILDRED PETERSON

THEODORE WALTER

MARY BECKWITH





WILLIAM SPRAGUE

ROBERT DIDHAM

RITA SPAFFORD

THELMA STAMBAUGH

VIDA KUMSE

MARIAN SASS

ELTON SAWYER

FRANK FANELLY

BESSIE RAMSAY





MARIAN SASS

MARGARET CARROLL

POLLY SAWYER

MARY DONZE

CLEO CROW

ELISE RUSS

LESLIE CHAPMAN





The College Theatre

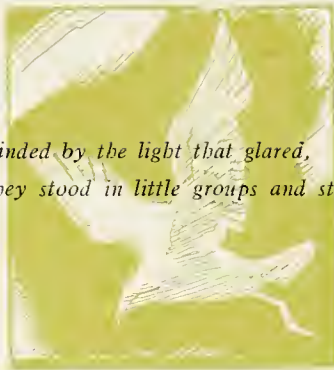
With the arrival of Professor E. Turner Stump, certain students interested in dramatics banded together and with the endorsement of Alpha Psi Omega, the national honorary dramatic fraternity, appointed Eldon Scoutten to present a petition to the president asking the establishment of a college theatre.

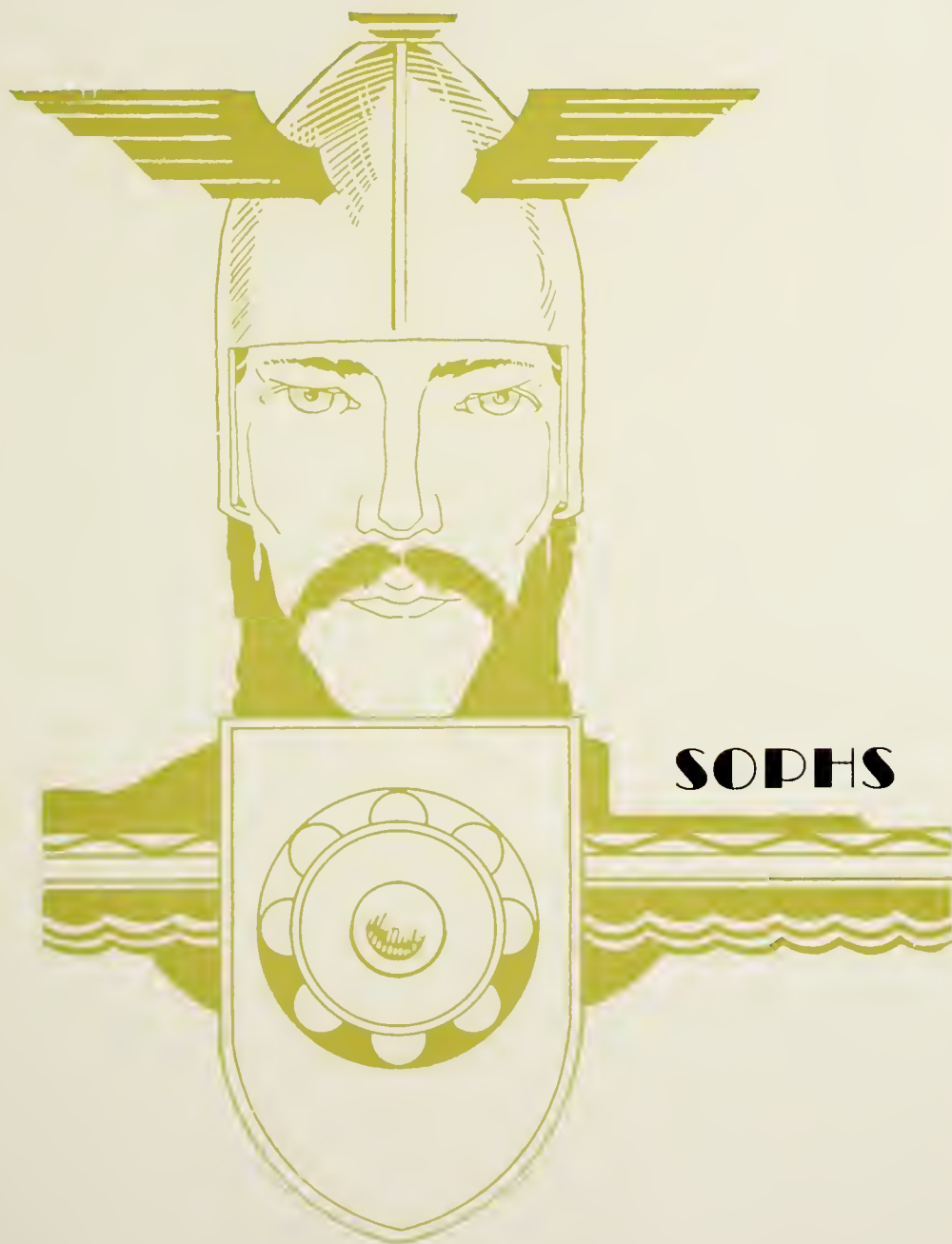
The petition was favorably received and the theatre was founded with over one hundred and fifty charter members. Taking the advantage of the excellent facilities offered in the new college stage the group produced the "Melting Pot" amid great acclamation and approval.

This marks the first step in a truly democratic group of dramatic players. The successes of the group in future years lies entirely in the hands of the students who are left. The senior class of 1931 trusts that they will not fail to carry the good work on to its utmost completion.

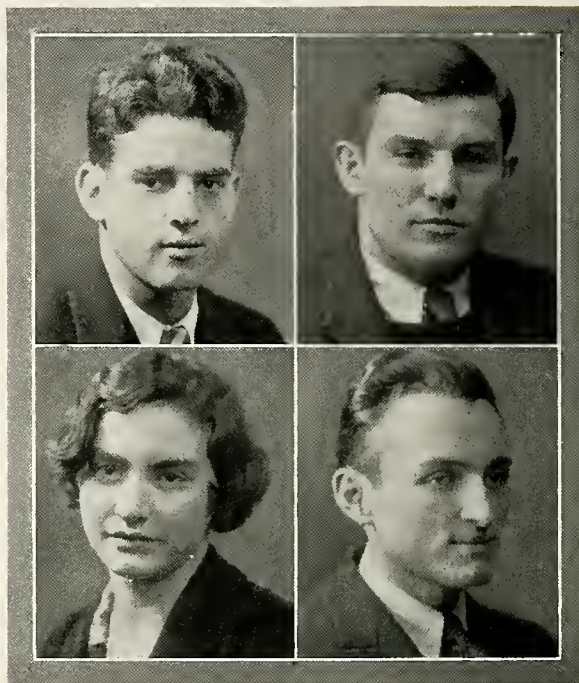


*"Blinded by the light that glared,
They stood in little groups and stared."*



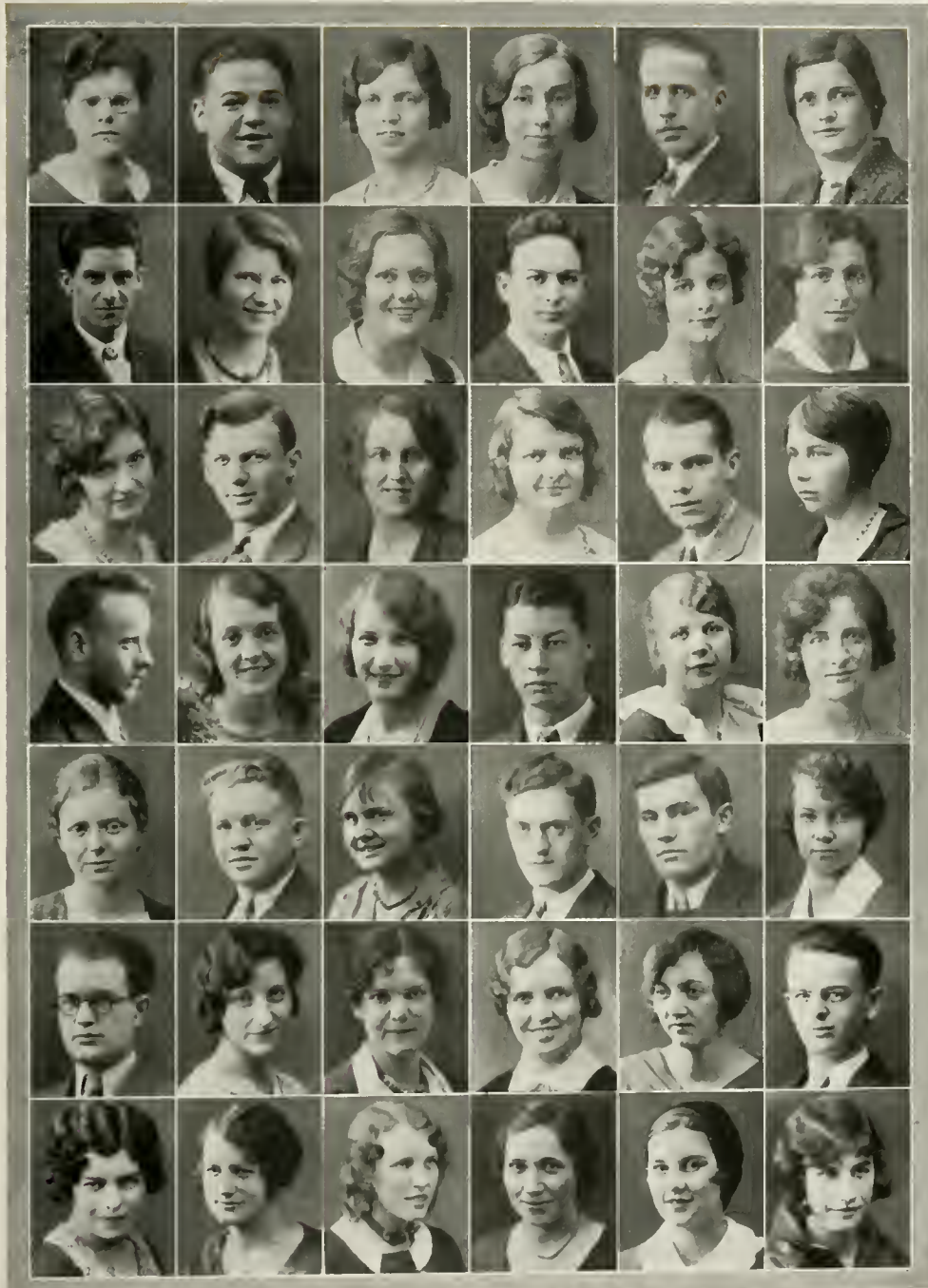


SOPHS



Sophomore Class Officers

<i>President</i>	-	-	-	-	-	-	-	-	-	DON HOUSLEY
<i>Vice-President</i>	-	-	-	-	-	-	-	-	-	D. C. ABBOTT
<i>Secretary</i>	-	-	-	-	-	-	-	-	-	ANNE CONRAD
<i>Treasurer</i>	-	-	-	-	-	-	-	-	-	JOE KELLEY



Louise Hamilton
William Lane
Agnes Montgomery
John Burger
Jeanette Riddle
Gertrude Zarin
Delbert Wishart

W. D. Nickerson
Margaret Roberts
Edward Stone
Clara Raby
J. H. Willetts
Katherine Wunderlich
Lucille Krediacs

Helen Boose
Helen Knox
Elvira Fisher
Elizabeth Kepko
Amelia Vesey
Edith Petre
Edith Avery

Ruth Watkins
Arthur Steere
Myrtle Heard
Glen Farrington
Harry Rutter
Maxine Henderson
Helen Fleming

Verne Warick
Gladys Shaeffer
D. A. Grubb
Donna Georgerie
D. C. Abboxy
Ruth Snedeker
Lois Scott

Mildred Jones
Mildred Clabaugh
Mildred Shilling
Marian Lane
Margaret Porter
Franklin Williams
Violet Gallabreese



Agnes Miller
Mildred Pyle
Margaret Melin
Elosie Dawes
Susanne Kenash
Francis Mericola
Anna Gow

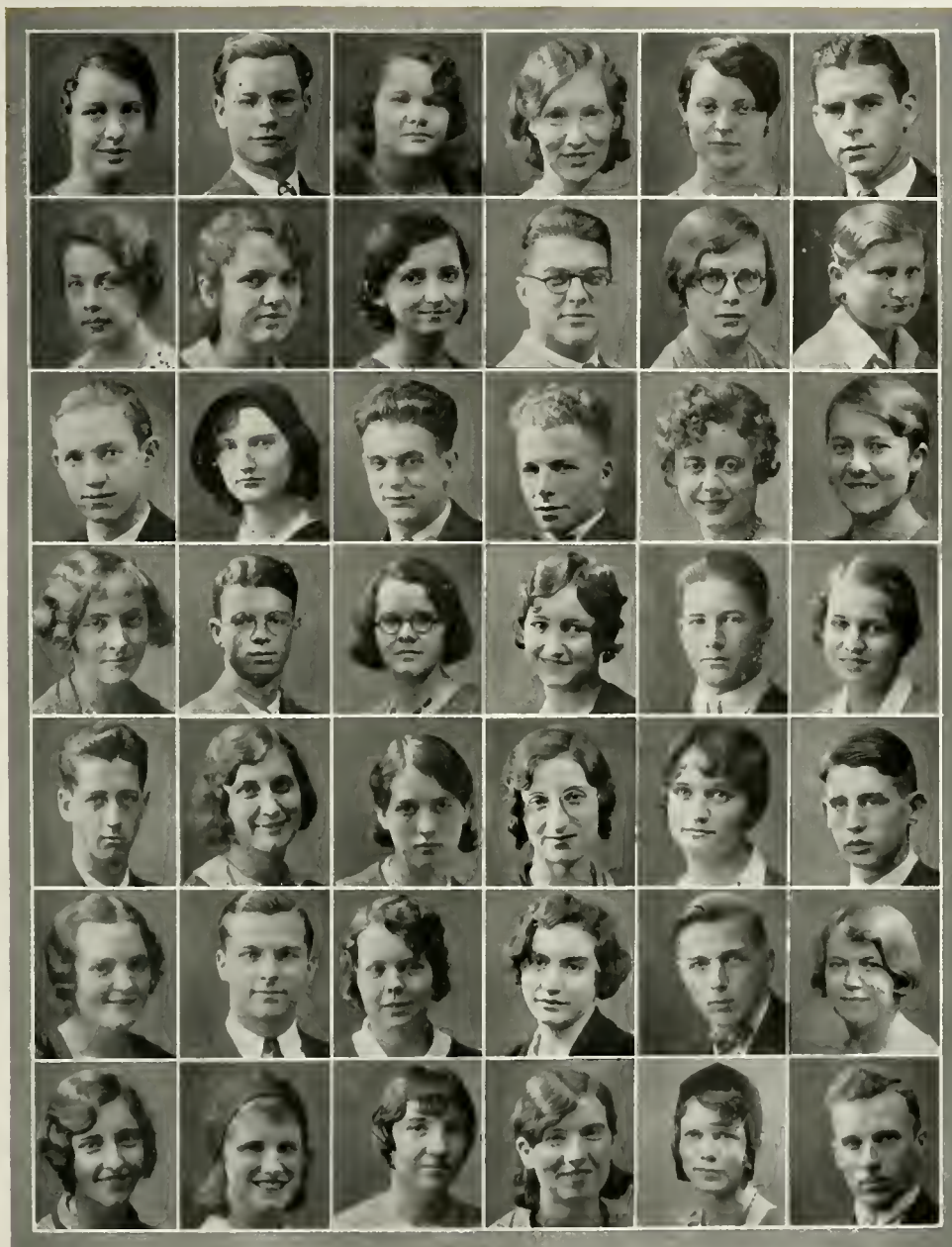
Kathryn Fahndrich
Ruth Swaney
Anne Koppial
Joseph Nappi
Lillian Somnitz
Clara Seymour
Ruth Blazek

Florence Bodman
Susie Palfi
Frances Falconer
Margery Deisman
Silvia Schlott
Anna Crum
Audrey Brostek

Leota Merrill
Edna Eaton
Helen Derr
Doris Cavanaugh
Belma DeFord
Helen McCandless
Roy Gilmore

Mary Leifer
Mae Kerr
Nesta Cornsey
Anne Burger
Mildred Bremer
Alice Bartholomew
Rose Halech

Ethel Mayer
Katherine Schaab
Mildred Stillwagon
Verna Leiser
Virgil Cobb
Alice Laird
Alice Borex



Winifred Butler
Mary Irwin
Eugene Traxler
Mildred Kingdom
Edwin Hirt
Dorothy Quinlan
Helen Holloway

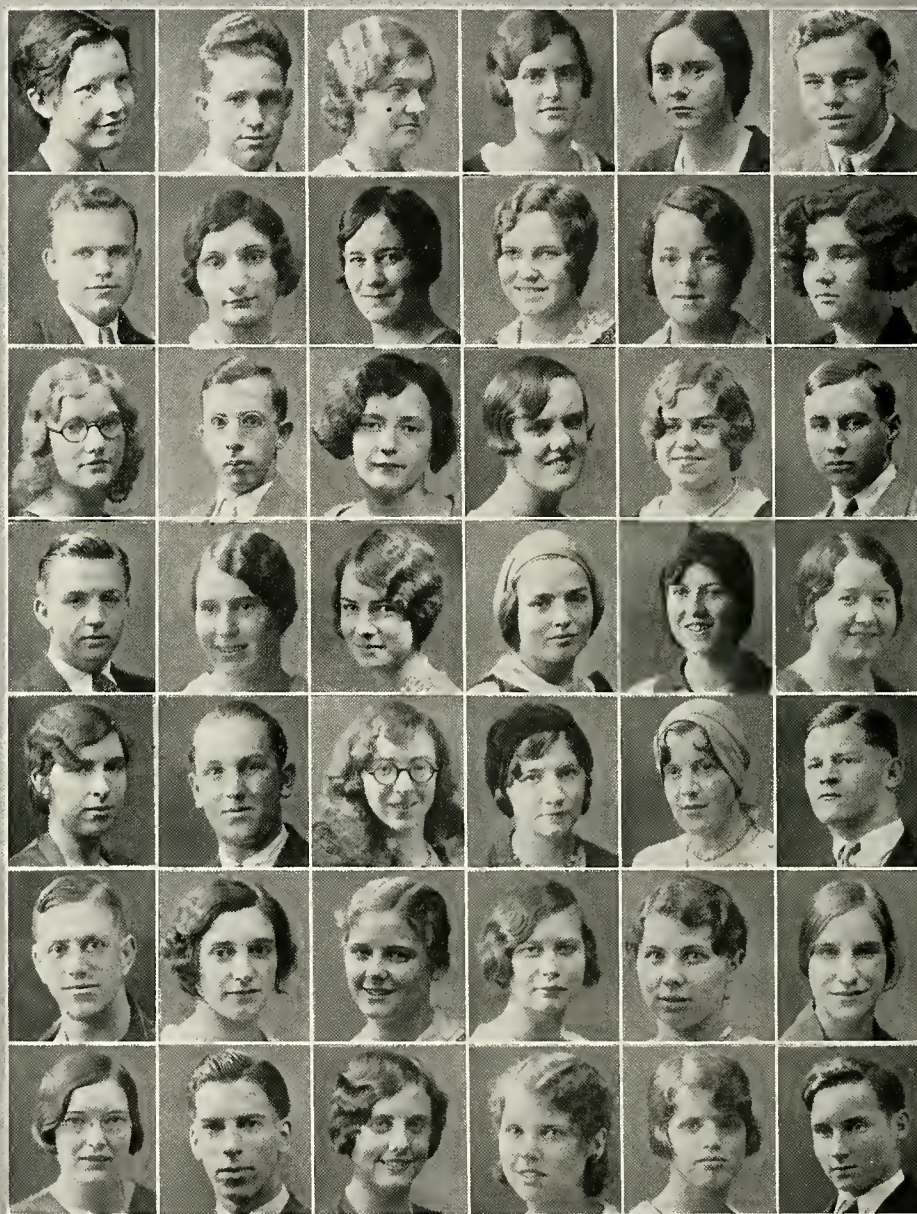
Arden Yockey
Naudean Johnson
Mary Shockley
Clayton Alden
Dorothy Mackey
Paul Karper
Ruth Reichard

Blanche Harner
Dorothy Jackson
Myron Warnes
Ruth Apley
Marguerite Holmes
Virginia Lyons
Faye Henderson

Freda Beyman
James Shelley
Pearl Freeman
Minnie Bruderly
Adelaide Baker
Anne Conrad
Ellen Lawrence

Shirley Goodwin
Zelma Zost
Ardis Reichard
Carl Pfenniger
Blanche Hillman
Arthur Tumpach
Lois Briggs

Kermit Taylor
Irene Thorne
Mary Macayko
Marian Fulmer
William Edmiston
Elsie Crewson
Arlie Hickman



Marian Friend	Wilmer Patterson	Jessie Shull	Clara Winkler	Evelyn Davis	Edward Merrell
Alva Sapp	Mary Calabria	Florence Woolf	Elizabeth Williams	Marguerite Waller	Adelaide Walker
Celestine Weisman	Fred Kloha	Ruth McGregor	Harriette Wilson	Anna Hunyady	Russell Gardner
Harold Jones	Laura Limbert	Lucille Ober	Jeanette Vients	Chloris Taylor	Molly Brand
Helen Frey	Merle Leggitt	Helen Zeh	Mildred Sheldon	Ruth Cuthbert	Chester Dunlavey
Walter Hagerdon	Maxine Rathens	Geraldine Williams	Mardella Near	Freda Lang	Dorothy Stallsmith
Fred Scott	Helen Skinner	Edith Olives	Hazel Johnson	Molly Thompson	Paul Wood



Bernice Stewart
Arlein Brown
Esther Kestley
Elizabeth Bulcher
Fred Swartz
Roy Henderson
Frances Moss

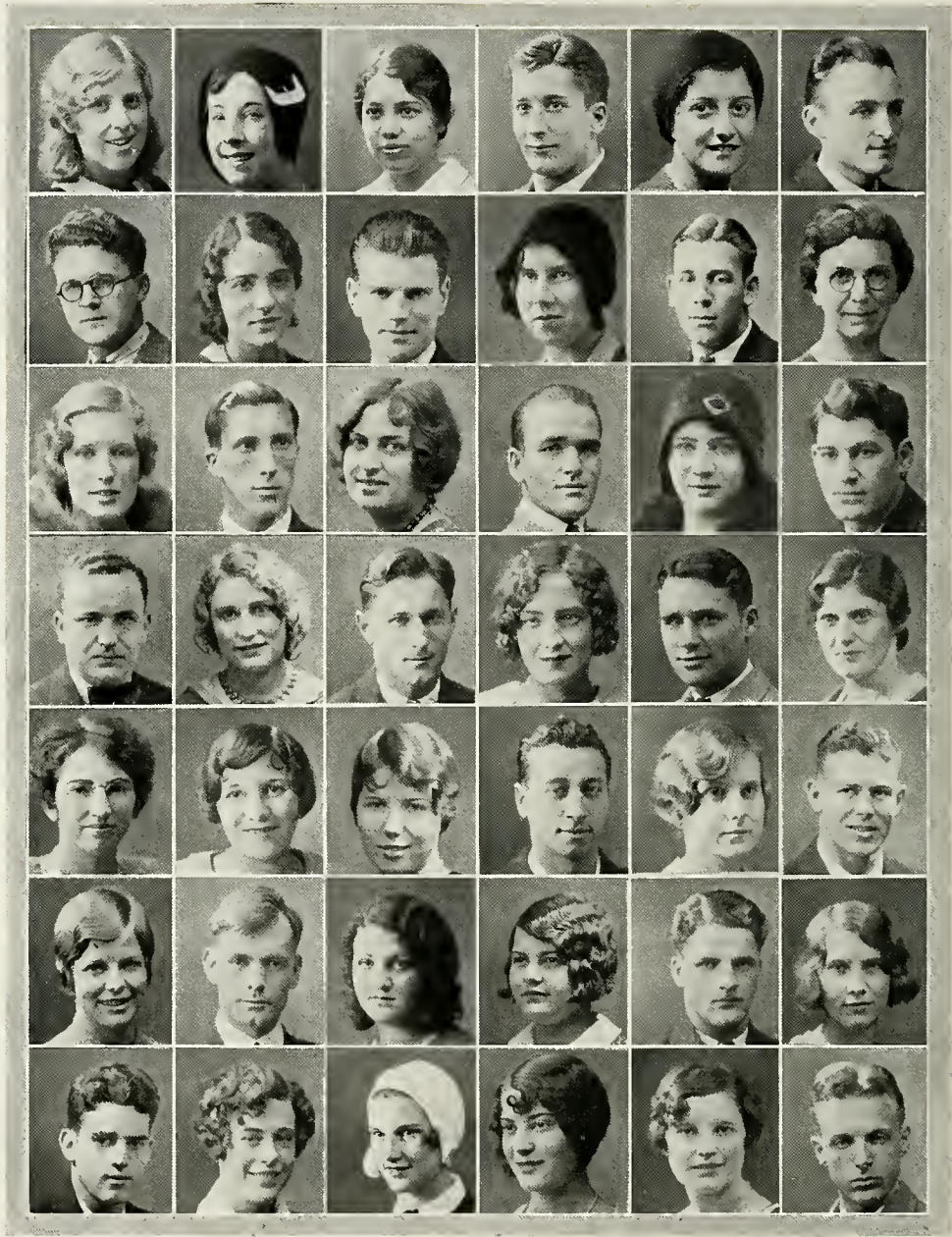
Alice Stoner
Eldred Miller
Lillian Bailey
Martha Baumberger
Thelma Kent
Katherine Cumming
Donald Climes

Dorothy McClelland
Ruth Niles
Ruth Paisley
Ethel Ettling
Ann Sula
Mary McIntire
Alberta Clark

Evelyn Harrold
Pauline Deal
Katherine Koontz
Emma Hosler
Ruth Myers
Doris Dean
Sarah Gallagher

Aleath Corbett
Helen Newman
Flo Henderson
Josephine Bogan
Marjorie Russell
Dorothy Mack
Delbert Cline

Gladys Heinlen
Edward Meecham
Gladys Carmello
Freda Berger
Pearl Hadlock
Allen Mizer
Martha Durbin



Sylvia Kangaskoski
Lawrence Phillips
Isabel Barber
Joseph Andraski
Freda Schneider
Eleanor Mansfield
Don Housley

Rose Donato
Harriette Patterson
Karl Falls
Ruth Foreman
Rose Marinelli
Howard Hopper
Virginia Dance

Susanne Adams
C. E. Atkinson
Victorine Moses
Michael Maro
Gertrude McKeown
Molly Domenico
Lois Scott

Matthew Flower
Mary Newton
Earl Russell
Anne Sloan
Louis Parenti
Lucille Dickerhoffe
Marie Jeppe

Helen Kasopf
William Disbro
Mary Rapasky
Larry Nicholson
Nadine Crosby
Leonard Baker
Bessie McDermott

Joe Kelley
Fannie Rice
James Rech
Agnes Albright
Merle Baker
Florence Haley
Arthur Hommel



Margaret Fleps
Garnet Long
Bernice Hochstetter
Catherine Nunnally
Russell Muster
Loleita Rule
Elizabeth Meade

Elvira Sickafoose
Mildred Keeney
John Menster
Joe Carl
Helen Spring
Geraldine Oshorne
Catherine Braham

Lois Burger
Jean Bensley
Mary Hughes
Mary Geifer
Vera Brown
Thelma Hazelitt
Helen MacCurdy

Ellen Griffith
Hazel Young
Ruth Pekarek
Pauline Terrett
Lavonda Baughman
Anthony Ross
Mary Bantum

John Snyder
Thelma Wagoner
Rose Aranoff
Olga Burick
Ethel Ford
Mary Perkins
Ruth Lytle

Ruth Barnshaw
Antonette Vetrano
Ruth Headley
Margaret Ackerman
Kenneth Oyster
Vita Baysinger
Thelma Grafton



Mildred Jenkins
Eleanore Hoffman
Marguerite Schmid

Geneva Byers
Dorothy Rose
Anna Schroeder

Irene Mayes
Freda Lang
Katherine Volosin
Marian Mouat

Marie Walsh
Ruth Joy
Ruth Caughey
Wanda Bussard

Ruth Adlard
Mildred Thomas
Mary Mauro

Agnes Henning
Geneva Potts
Madeline Rects





Errors--

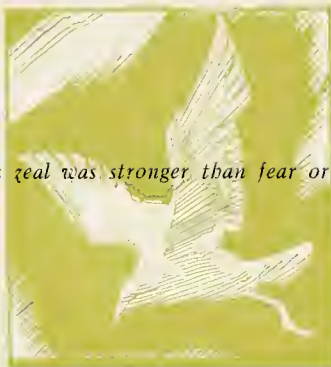
Errors—big ones and little ones—common ones and rare ones—avoidable and unavoidable—they are all here. Your name may be misspelled. Your picture may be misplaced. You may feel insulted. But please do not.

We have given you the best book that we could produce. We believe that it is a worthy volume. There have been many people handling the production of this book and with many people there are always many errors.

There have been many forces working against us. Fraternity politics, faculty dissension and even student jealousies have combined to make the production of this book a thing of difficulty. Therefore we ask you to bear with us and to overlook the errors which you find.

THE EDITORS

"His zeal was stronger than fear or love."

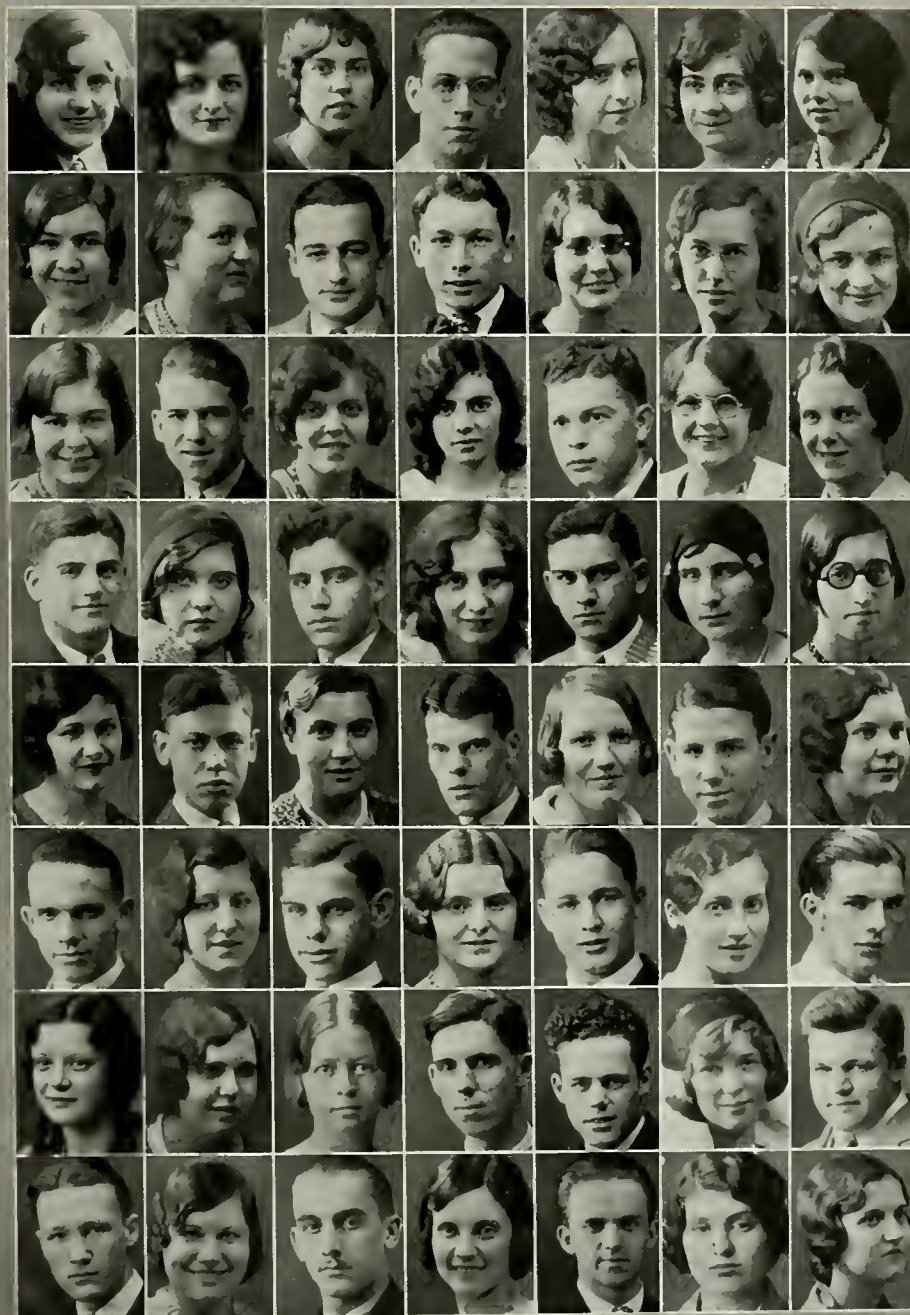






Freshman Class Officers

<i>President</i>	- - - - -	RUSSELL BROOKS
<i>Vice-President</i>	- - - - -	ELIZABETH REUFNER
<i>Secretary</i>	- - - - -	JOE DAY
<i>Treasurer</i>	- - - - -	BEULL STRINGER



Ruby McHough
Pauline Whitman
Ruth Weygant
Sam Cipriano
Margaret Lindenlucker
Harry Williams
Maxine Tittle
Raymond Plough

Gertrude Warren
Lucille Galloway
Marlene Kelley
Glade Bayne
Duane Baker
Florence Keifaber
Colletta Stephens
Bernice Wilczak

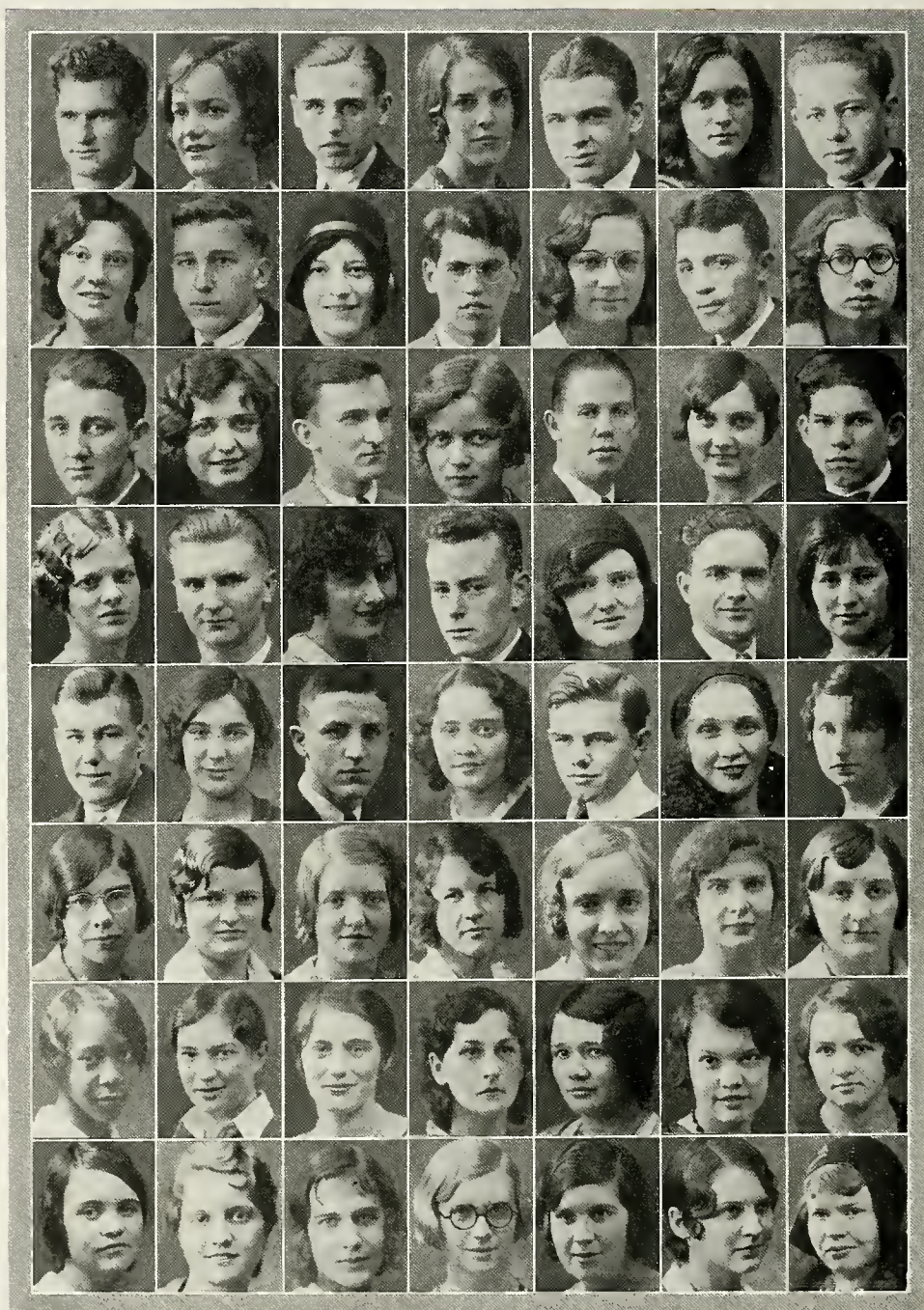
Elsie Cole
Francis Binkley
Dorothy Seifert
Frank Julian
Helen Dunstan
John Horning
Catherine Hancock
D. E. White

Robert Gibson
William Heber
Mildred Knisely
Nadean Schumacker
Riley Runk
Helen Dunlap
Henderson Clay
Maxine Moore

Georgia Richard
Roberta Black
Clarence Cummings
George Insinger
Dorothy Stadler
Earl Evans
Paul Strahl
Donald Alderman

Kathleen Barnard
Mary Whitecotton
Pauline Caldwell
Viola Drown
S. J. Fear
Marie Dishong
Berny Winecop
Louise Sause

Katherine Harrison
Elizabeth Rufener
Marietta Decker
Mary Winger
Mary Sneider
Newman Carr
Ralph Bambeck
Bernice Pannier



Jay Littlepage
Fay Lantzer
Kenneth Myers
Ruth Harris
George King
Lenore Kellog
Leona Keeble
Lillian Case

Marian Masher
John Hastings
Dorothy Postich
J. B. Stevens
Dorothy Papp
Grace Hoenshie
Claudia Clevenger
Mildred Hall

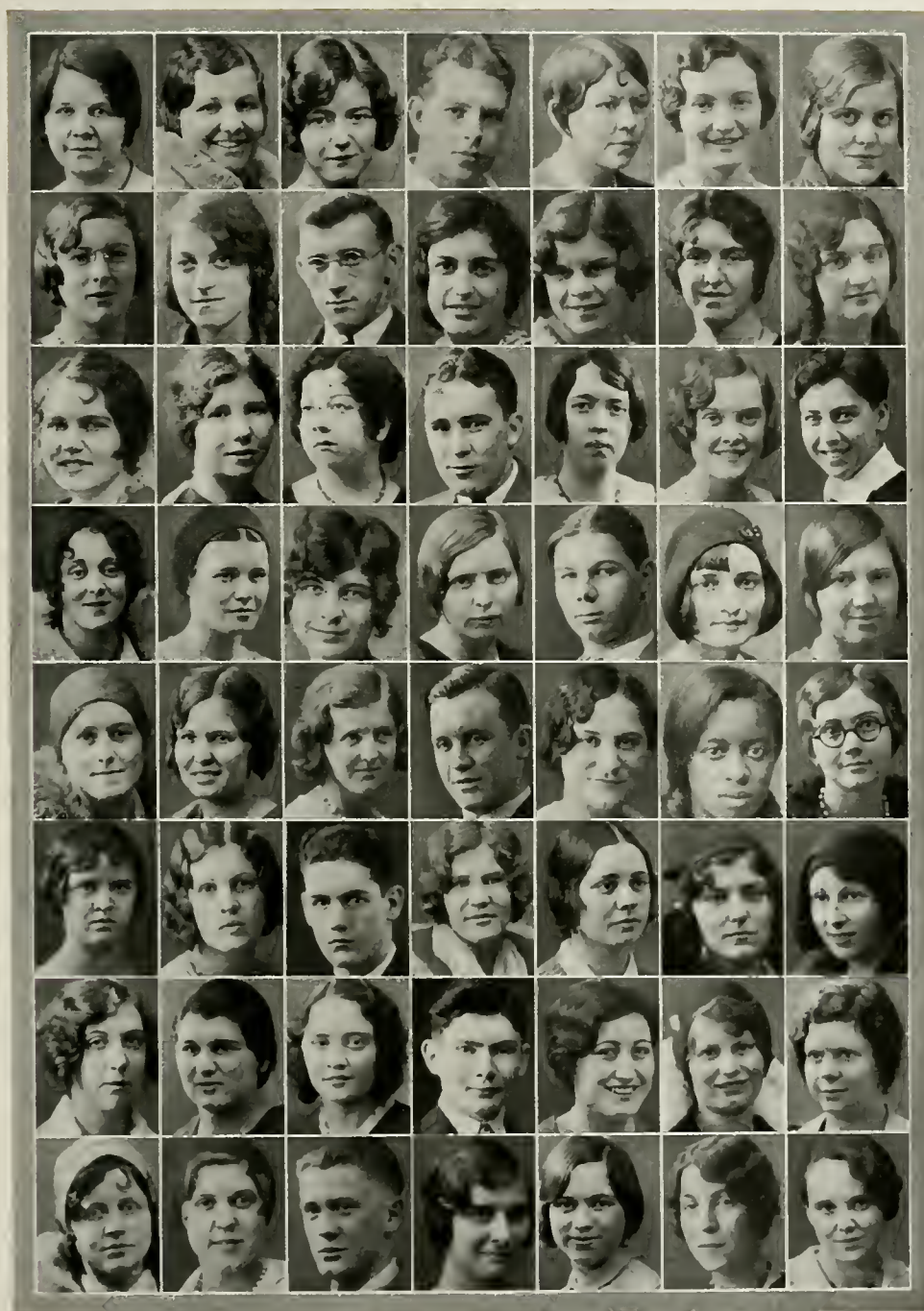
Allen Weniger
La Verne Solomon
Kenneth Wiechel
Kathryn Wenhart
Edmund Kuhn
Marian Ingalls
Elizabeth Barnhouse
Evelyn Dick

Sarah Morgan
Franklin Day
Florence Flower
Donald Cook
Elizabeth Wilson
Ethel Klesa
Barbara Engleman
Esther Foot

Richard Mansfield
Dorothy Walter
Lemo Christian
Mary Jane Manchester
Frank Weiss
Lorna Southart
Dorothy Sylvester
Elizabeth Norris

Audrey Ford
Stephen Toma
Maxine Cobb
Harry Kirk
Helen Sloan
Mable Battles
Pauline Stonehill
Harriette Crawford

Lewis Hist
Imogene Singer
John Ryzna
Ruth Randall
Louise Huge
Fern Lower
Virginia Stoffer
Mary Moore



Helen Kalafus
Joyce Lowe
Barbara Petre
Louise Henderson
Helen Burgett
Pearl Chubb
Harriet Percival
Gladys Moffet

Jeanne Kinch
Vera Mathews
Gladys Moore
Kathryn Faulk
Mildred Kreider
Evelyn Morgan
Beulah Fritt
Louise Grove

Maxine Beyer
James Nelden
Betty Soskin
Laurel Hauley
Isabel Jones
John Hartle
Elizabeth Wilson
J. T. Klein

Arthur Willis
Kathryn Newder
Robert Charpence
Dorothy Clark
Richard Kinney
Louise Bowen
Lower Kellogg
Winifred Ehrich

Ruth Moyer
Helena Kossman
Gertrude Ward
Walter Day
Mary Buss
Jane Callahan
Adeline Rotondi
Mary Quealy

Lillian Newman
Alice Turner
Winifred Remick
Lauretta Ladrock
Eugenia Brown
Louise Heide
Maxine Miller
Blanche Urban

Helen Hoffman
Evelyn Keifer
Ruth Kopp
Mildred Horst
Lois Faulkner
Elizabeth Wilson
Eunice Hines



Alice Rudder
Elsie Stocker
Mary McGuire
Rose Molle
Maxine Lechleitner
Kathryn Detrow
Marjorie King
Lucille McKeisnan

Edith Scott
Mrs. Anna Klein
Sarah Fink
Alice Wootspolus
Laduska Mathews
Ruth Zerbe
Sarah Straisma
Margaret Acken

Mary Harding
Gerald Leonard
Janet Jones
Selah Straight
Minnie Doll
Thomas Jenkins
Florence Lewandosky
Deloras Zimmerman

Pete Cipriano
Pansy Fryett
G. N. Beal
Helen Hawkins
Forest Hawk
Anne Munlear
Louis Egerer
Adeline Kellogg

Vest Tryon
Jeannette Carl
Yetta Snyder
Charles Hagerty
Francis Scalise
Burnett Capusell
Miss Barnard
Harrold Gear

Goldie Vianis
Mary Myler
Wilma Quinly
Stella Hudons
Evelyn Volty
Gladys Summers
Betty Anderson
Clara Huff

Ellen Wengert
Dolcie Murphy
Elizabeth Neudorf
Elizabeth Beavis
Helen Shield
Mary Stoner
Elizabeth Kline
Elizabeth Noel



Burton Bell
Amelia Gelbke
George Fudge
Sarah Hurd
Ruth Wagar
Wilda Strausse
Bernice Shaffer
Charles Demian

Josephine Taft
Elmer Dunlavey
Adeline Wilcox
Mary White
Ina Butler
Joseph Day
Virginia Russell
Doris Grauet

Guy Arussi
Dorothy Shrum
Oscar Walter
Jezn Baer
Corrinne Dodd
Kathryn Worts
Margaret Van Winkle
Gladys Moore

Margaret Topliff
John Wilson
Arline Fohl
Rose Winke
Dorothy Espenchied
Julia Van Court
William Shipman
Madeline Thompson

Clive Lukens
Margaret Weiznecker
L. W. Starner
Hazel Vincent
Margaret Armitage
Aletha Rager
Grace Van Dorsten
Virginia Mansfield

Mae Slaven
Earl Wright
Dorothy Boardman
Ruth Johnson
Mary Parks
Marie Sandrock
Lucille Pierce
Catherine Phillips

Robert Mills
Martha Frost
Winton Cornish
Genevieve McNeil
Marthana Diver
Ethyl Schremer
Lucille Price
Buell Stringer



Robert Mullett
Helen Heckathorn
Fanny Ventresco
Josephine Reed
Hanna Schotsch
Catherine Clark
Helen Abel
Vesta Donaldson

Alice Galloway
Ruth Timpe
Eugene McAbee
Hazel Jones
Muriel Fischel
Anna Ross
Sylvia Allen
Bernice Hosfield

Frances Griffith
Mary Horner
Sylvia Allan
Louise Bologna
Laurence Hartzell
Margeurite Daershug
Rose Minke
Dorothy Gamble

Wayne Naylor
Lillian Janson
Mary Archer
Dorothy Wilkin
Alyce Rieglet
Beulah Newton
Nellie Naragon
Lena Heidelberg

Mary Stotts
David Nelson
Cletus Edwards
Lois Akers
Eleanor Yocum
Elizabeth Kellogg
Jeanette Van Fleet
Lynn Hodgins

Ray Nesbitt
Edith Stace
Adaline Heller
Jessie Roderick
Trami Kosola
Emmaline Hart
Stella Roth
Gertrude Starr

Virginia Stam
John Cole
Georgia Prichard
Virginia Lythe
Marian Jones
Mildred Cramer
Evelyn Yountz



Dorothy McKenney
Beull Stringer
Juanita Diver
Maxine Boyd
Dorothy Brenisen
Martha Brodbeck
Virginia Musit
Gladys Maffett

Robert Blythe
Helen Locke
Anna Maffini
Elizabeth Crawford
Russel Cruger
Rose Zurbuch
Mary Guillet
Grace Nagle

Ethel Palsy
Francis Green
Ruth Condo
Susie Urban
Ruth Lioier
Dorothy Wallis
Ruth Loomis
Ruth Harrum

Kenneth Hissner
Florence McNerny
Phebe Kissinger
Agnes Lozier
Priscilla Price
Irene Polen
Marcella Rush
Elizabeth Schoff

Faith Spellman
Russell Brooks
Mary Beck
Eleanor Disbro
Anna Evans
Kenneth Bell
Juanita Freshly
Lucille Butzer

Robert Mullett
Corenne Dodd
Grace Clinker
Mabel Cromwell
Martha Walker
Anna Tescher
Edna Cheadle
Emilie Feilding

Estelle Welser
Paul Barr
Bernice Knisley
Mabel Smith
Ruth Pollock
Jessie Freeman
Kathryn Kenney
Mary Long



Arthur McPeck
Mary Rayen
William Martin
Bessie Spellman
Billy Langell
Mary McKenny
Price Chamberlain
Mary Findley

Mabel Smith
Dean Gintert
Ingrid Smerling
Dean Marshall
Helen Rutledge
Don Straub
Clarabel Spacht
Mildred Horst

Corvin Gehrig
Thelma Brokaw
Kennon Callahan
Betty Moore
Elwood Miller
Pauline Long
Nelson Gauger
Marie Boron

Iuanita Diver
William Saare
Estelle Brown
Willis Janson
Kathleen Crile
Clark Musser
Martha Nogal
Olive Alleman

Harold Schamp
Clara Kosman
Charles Focht
Elizabeth Foster
Dale Bowman
Marcellain Kroft
Thomas Carothers
Doris Clark

Dorothy Stoffer
Charles Glatzer
Isabel Kirkland
Alton Schopfer
Jean Baumberger
Fred Hanni
Hazel Kaufman
Ruth Reese

Ivan Shilliday
Kathryn Horst
Charles Strater
Norma Grossklaus
Norman Chaffin
Dama McVey
Ruth Hoffman
Evelyn Brillhart



Hervey Stahl
Mildred Jones
William Heyde

Hazel Resler
Frances McClelland
Margaret Wagner

Wesley Brittan
Mary Jane Wild
Bonnie Hart

Mildred Ross
Josephine Wright
Pauline Culbison

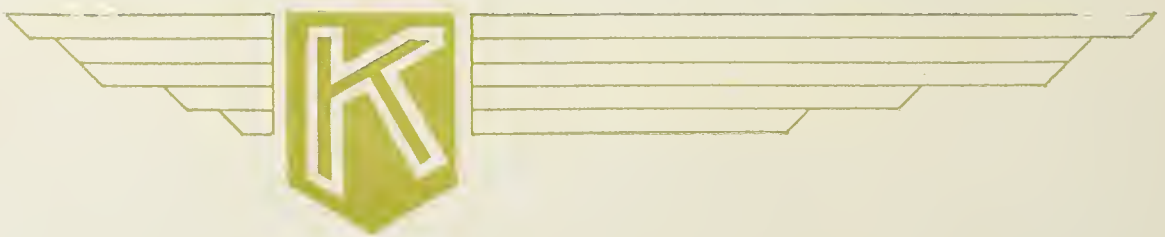
James Warthen
Martha Imhoff
Ruth Shreve

Barbara Whidden
Phyllis Jenkins
Mary Watelskey

Marjorie Woodin
Alice Lewis
Iris Phillips



ATHLETICS



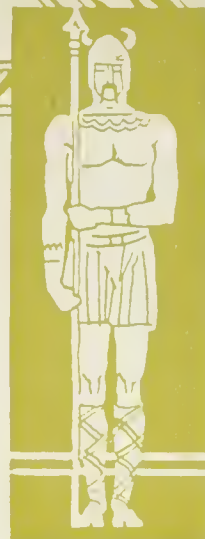




Coach Merle E. Wagoner

Of the several things of which Kent State may justly be proud is the fact that a man such as Coach Wagoner is at the helm of the athletic ship. With unwavering courage, keen insight into human problems and a firm resolve to put our athletics on a higher plane, he has endeared himself to every student in this college.





Assistant Coach Joe Begala

Coach Begala has made himself felt in more ways than one, and Coach Wagoner is to be complimented upon securing such a man as an assistant. Begala's wrestling teams have won state and national recognition, and he is responsible for the splendid showing of the football line during the past two years.





ARLEIN BROWN

LOIS SCOTT

RUTH WAGAR

Cheerleaders

Kent State has never had a real live cheering section. Now and then a few patriotic students will gather about one of the above and emit a few attempts at cheering. Cheering may help the team and again it may not. The fact remains, however, that whether or not it aids the team, it is a great satisfaction to the cheerleaders to hear a hearty response to their efforts. Of course the best sort of cheering and that which encourages the teams most, is not the mechanical yells directed by a convulsive automaton, but a real spontaneous outburst which is not given at the plea of the cheerleader but at the instigation of one's emotion. The cheerleaders are a hardworking crew and their assignment is not easily filled. Hence they deserve our full support.





HARLEY SEISS

WILLIAM EDMISTON

ROBERT BLYTHE

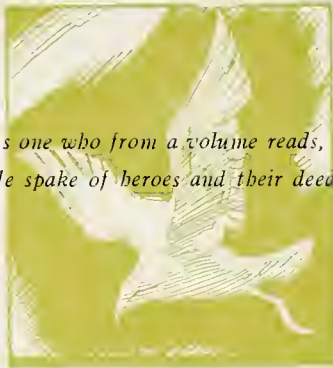


Managers

The underdog at an athletic contest always gets a big hand and lots of encouragement. But the real underdog is unknown to the audience. Who is it that toils long after the team has gone home, in cleaning up the rooms which they have used? Who is it that runs his legs off at the commands of everyone from the president to the janitor? It is not the coach. It is the poor, toiling manager. Theirs is the only true part in the game. They don't play for public applause. They don't get paid. Now and then they get a letter. They work just as hard as the team. They work longer. They are the real heroes of our athletic system.



*"As one who from a volume reads,
He spake of heroes and their deeds."*





FOOT- BALL



Varsity Football Squad, 1930

Front Row: COACH BEGALA, EDMISTON, HEAD COACH WAGONER, SEISS, SICKMAN, LANE.

Second Row: HAGERDON, SHELLEY, BAKER, TAYLOR, HICKSTEAD, HALL, KILBOURNE, FANNELLY, NICHOLSON, MERICOLA, CARL.

Third Row: NAPPI, BAKER, BARRY, MENSTER, BROZ, HOUSLEY, MILLER, NICKERSON, SCOUTTEN, ABBOTT.

Fourth Row: BAUGHMAN, WILLETTS, MILLS, CLIMES, STEJSKAL, DISBRO, MERRELL, TAYLOR, SECRIST.



Season Review

Kent State.....	6—Mt. Union	18
Kent State.....	6—Akron	12
Kent State.....	0—Case	6
Kent State.....	0—Ashland	0
Kent State.....	6—Hiram	0
Kent State.....	26—Capitol	0
Kent State.....	13—Defiance	6

Summarizing the season does not result in such a poor conclusion when one considers the calibre of the teams which our varsity met—and conquered.

Last year was the first season in which Kent played as a member of the Ohio Conference. It is one of which to be proud. The Golden Flashes of last year were the finest group that this college has ever produced.

Mt. Union, fresh from a defeat at the hands of O. S. U. experienced great difficulty in downing the fighting team from Kent. Akron found an unexpected tartar in our team and won only after two freak runs on the part of their one-man team. Case of Cleveland which had been romping through opponents in an easy style, was hard pushed to beat our men by one touchdown.

Ashland trounced thirteen Ohio teams but could not even score on us. Capitol U was rounding out an undefeated season when Kent stepped in and ruined an otherwise perfect home-coming day by scoring a real victory to the tune of 26-0. Hiram offered little resistance and were it not for the oozy field we would have beaten them yet more severely. Defiance met us for our home-coming game and they were repulsed, 13-6.

Three wins, as many losses and one tie gives us the respectable average of .500 for the season with a total of 57 points scored against 42 of the opposition.

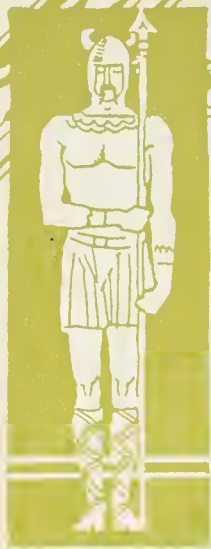
The speedy backfield stars including, "Cocky" Kilbourne, "Art" Stejskal, "Deke" Abbott, "Phil" Barry and "Bill" Disbro, made more first downs than the opposition in every game but two.

The defensive power of the team was a big asset. The five center men on the line have been characterized as the best in Ohio. They were K. Taylor, Fannelly, Merrell, Sapp and Shelley. The group of ends played no small part in the success of the team. Stellar performances were turned in by Housely, W. Taylor, Hagerdon, Hall and Hicksted.

Four stars are lost by graduation: Kilbourne, Sapp, Stejskal and Barry. Kilbourne is one of the best fullbacks in the country. Sapp is material for an all-Ohio selection. Stejskal wrought havoc with all opponents lines and is one of the greatest line-plungers in the state. Barry was a seasonal find and in one game gained an average of seven yards every time he carried the ball.

Prospects for another season are bright anyhow. The freshman squad, coached by Lennie Brickman, has a wealth of material and should produce some future stars. Gear, Kinney, Stahl, Heber, Johnson and Hissner showed up well in the scrimmages against the varsity. An impressive schedule has been arranged for next season and we may well be optimistic.





"ART" STEJSKAL

North Olmstead, O.; Senior; Halfback; Weight 180.

The Powerhouse of the Kent Attack.



"COCKY" KILBOURNE

Kent, O.; Senior; Fullback; Weight 185.

Kent's Greatest Fullback.



"PHIL" BARRY

Ravenna, O.; Senior; Halfback; Weight 155.

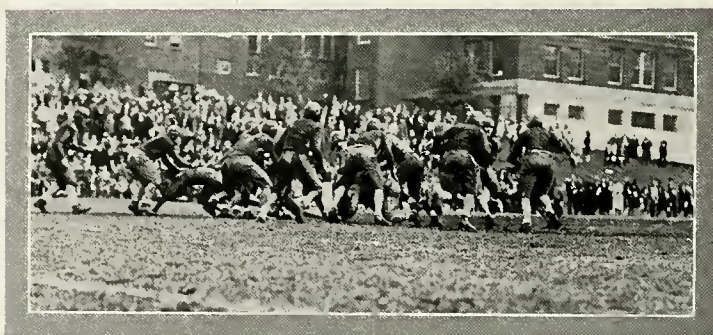
Kent's Fighting Redhead.



"PETE" SAPP

Kent, O.; Senior; Tackle; Weight 170.

A Tower of Strength for Four Years.





KERMIT TAYLOR

Kent, O.; Sophomore; Guard; Weight 155.

The Wildcat of the Line.



"BILL" DISBRO

Mayfield, O.; Sophomore; Halfback; Weight 170.

The Speedy Ground-gainer.



"DEKE" ABBOTT

Findlay, O.; Sophomore; Quarterback; Weight 165.

Our Great Defensive Threat.



"JIM" SHELLEY

Wooster, O.; Sophomore; Tackle; Weight 175.

The Immovable Stone Wall of the Line.





LOUIE FOGG
Kent, O.; Junior; Guard; Weight 155.
The Steady Playing Guard.



"JIMMY" HAGERDON
Cuyahoga Falls, O.; Sophomore; End; Weight 165.
The Fast Developing End.



"DON" HOUSLEY
Stow, O.; Sophomore; End; Weight 135.
Our Best Bet in the Passing Game.



LARRY NICHOLSON
Cambridge, O.; Sophomore; End; Weight 145.
The Faithful, Fighting End.



"JOE" CARL
Ravenna, O.; Sophomore; End; Weight 145.
The Diminutive Fighter.

"CHICK" HICKSTEAD
Cuyahoga Falls, O.; Senior; End; Weight 165.
The Steady Defense at Our End.

FRANK FANNELLY
Akron, O.; Senior; Guard; Weight 175.
Another Block in the Path of Opponents.

"MOSE" HALL
Brookfield, O.; Junior; End; Weight 160.
Handicapped by an Old Injury.





"ELLIE" MILLER
Stow, O.; Sophomore; Halfback; Weight 135.
Kent's Fastest Backfield Man.



"JOHNNIE" MENSTER
Louisville, O.; Sophomore; Halfback; Weight 155.
A Coming Threat.





"JAY" WILLITTS
Kent, O.; Sophomore; Guard; Weight 145.
A Coming Lineman.



"PATHE" SCOUTTEN
Kent's First Official Motion Picture Cameraman.





An Enigma

Merle E. Wagoner has been coach of Kent State athletics for six years. He has brought our teams from something to be laughed at, up to a position where, today, they are known and feared on every campus in the state.

Kent State is no longer a normal school. We are a college, a full-fledged men's college. As such we deserve to be represented by first class teams. And we have those teams.

But those teams cannot be forthcoming unless changes be made to suit the growth of the school. Wagoner needs a staff. He needs his full time available for his duties as coach. He needs untrammelled authority in his field. He needs available hours in the gym. He needs LESS meddling on the part of certain faculty and townspeople.

He has needed all this for six years. He has not gotten it. Will he ever get it? The alumni of Kent State college is waiting to see.







BASKET- BALL



1931-1932 Schedule

December 15—Heidelberg, here.
December 19—Muskingum, here.
January 5—Mt. Union, there.
January 7—Akron, there.
January 13—Hiram, here.
January 22—Kenyon, there.
January 23—Wooster, there.
January 29—Mt. Union, here.
February 5—Baldwin-Wallace, there.
February 10—Western Reserve, there.
February 13—Hiram, there.
February 16—Baldwin-Wallace, here.
February 20—Otterbein, here.
February 24—Wooster, here.
February 27—Kenyon, there.

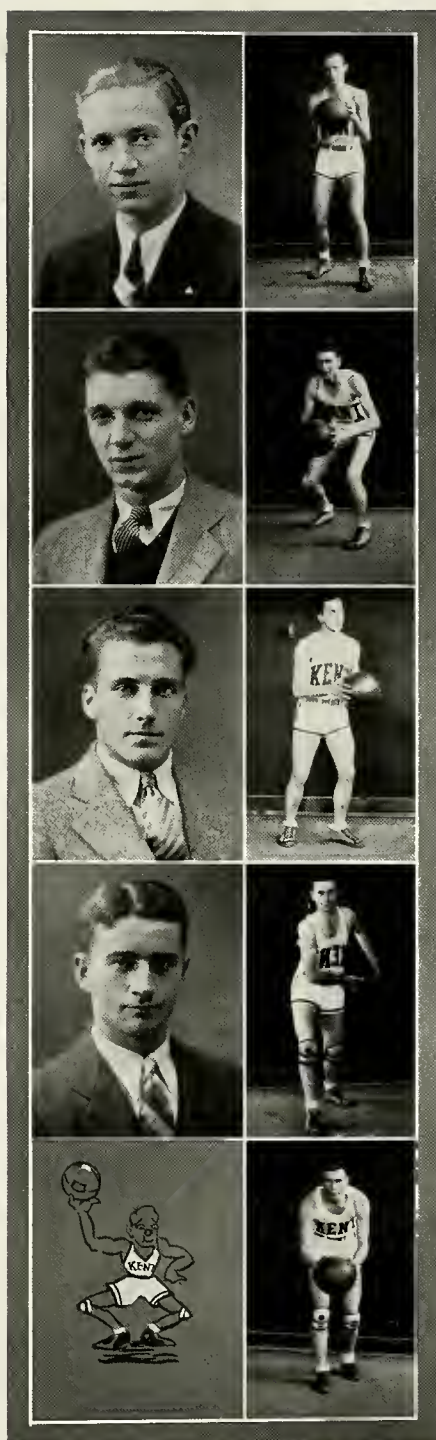


Record 1930-31

Kent.....	26—Case	18
Kent.....	31—Capitol	22
Kent.....	23—Mt. Union	37
Kent.....	35—Muskingum	33
Kent.....	20—Marietta	40
Kent.....	22—Wooster	35
Kent.....	26—Hiram	24
Kent.....	24—Heidelberg	39
Kent.....	35—Wooster	53
Kent.....	33—Kenyon	23
Kent.....	19—Mt. Union	52
Kent.....	23—Ohio Northern	40
Kent.....	25—Akron	28
Kent.....	43—Marietta	34
Kent.....	40—Ohio Northern	31
Kent.....	42—Kenyon	35

Kent has had a strange year on the maple. They were up and then they were down. They trimmed Muskingum, Marietta, Hiram and Case. Those four teams represent the cream of the Ohio Conference. Then they went into a slump and fell to Akron, Mt. Union and several others. The fault was not with Coach Wagoner. A man who is allowed the grand total of four and five hours of weekly practice and who can turn out a team such as Kent has, is a man to be retained and treasured. He has ideals high enough to place Kent at the top, but when his time is devoted to tasks in other departments his ideals have to suffer. Give Wagoner a fair chance and then let's see his team perform. Even now he gives a .500 average.





GENE TRAXLER

Forward

Sophomore

Stow, Ohio

GORDON KELSO

Forward

Senior

Ravenna, Ohio

HARLAND SICKMAN

Guard

Senior

Mayfield, Ohio

CLYDE HALL

Center

Junior

Brookfield, Ohio

WALTER TAYLOR

Guard

Junior

Akron, Ohio



CHARLES HICKSTEAD

Forward

Junior

Cuyahoga Falls, Ohio

JOHN MENSTER

Forward

Sophomore

Louisville, Ohio

LEONARD BAKER

Guard

Sophomore

Grafton, Ohio

LARRY NICHOLSON

Forward

Sophomore

Cambridge, Ohio

WALTER HAGERDON

Guard

Sophomore

Cuyahoga Falls, Ohio







OTHER ATHLETICS



Baseball, 1930

SEASON'S RECORD

Western Reserve	9—Kent State.....	8
Oberlin	10—Kent State.....	0
Ohio Northern	6—Kent State.....	9
Hiram	8—Kent State.....	9
Mt. Union	11—Kent State.....	1
Hiram	1—Kent State.....	12
Akron	13—Kent State.....	3

Baseball finds little support among students at Kent and consequently little can be expected of the squad which "Wag" turns out. Baseball as a college sport is a relic of antiquity. Despite the lack of interest "Wag" has produced some good teams in past years.





Wrestling

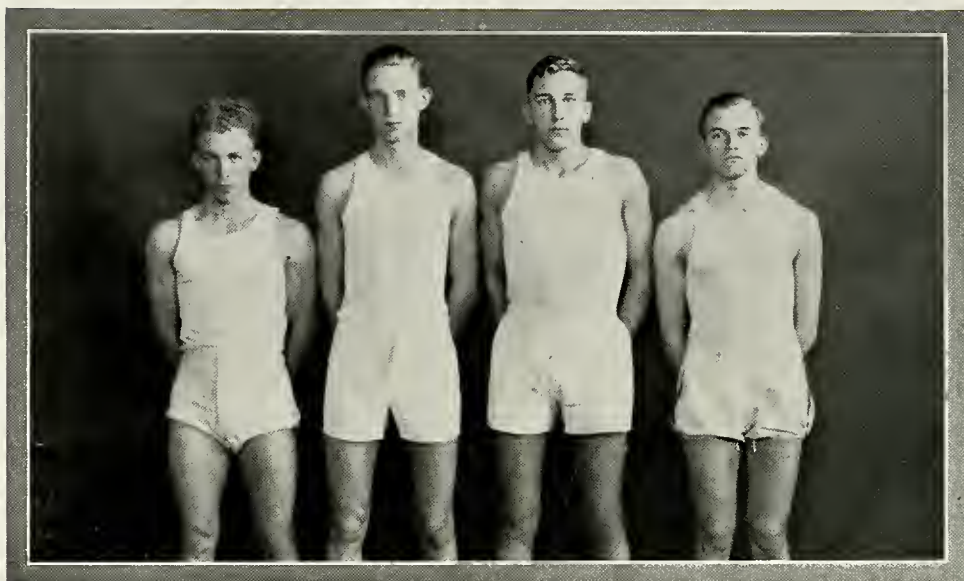
Although it is Kent's youngest varsity sport, wrestling is also one of its most popular. This is due to the calibre of the teams which we are putting out.

Two state champions last year and three this year gave us national notice. Stejskal, Dunlavey and Menough came thru this year.

So far this season the team has downed Miami, Case and Akron, the latter by a score of 40-0. They have lost to Ohio U. and to Ohio State B.

Coach Begala is to be complimented on his team and Captain "Art" Stejskal, the state Champ of last year, is to be congratulated upon the splendid style in which he leads his men.





Men's Intramural Sports

Intramural sports were first introduced at Kent last year when competition was held among the three fraternities and the independent men. The sports are under the direction of Professor George J. Altmann, of the physical education department. During each quarter of the school year various tournaments are held and the winners of each are awarded a certificate and points towards the year's trophy.

Spring, 1930

The contests held were in tennis, in which the Delta Phi Sigma men took first place and in Indoor Baseball in which the Kappa Mu Kappa took first place.

At the recognition banquet the first year's trophy was awarded to and became the permanent possession of the Delta Phi Sigma Fraternity. New trophies will be offered each year and will be awarded to the team which has compiled the greatest number of points during the year.





Fall, 1930

With the opening of the fall term came the opening of new competition and the following tourneys produced the following winners:

Cross-Country Run—Independents

Volley Ball—Independents

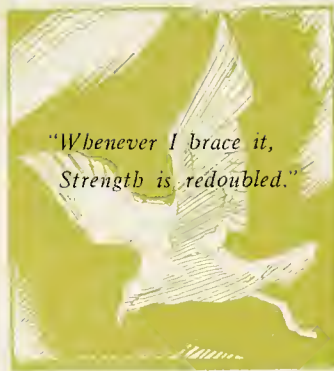
Horse Shoes—Delta Phi Sigma

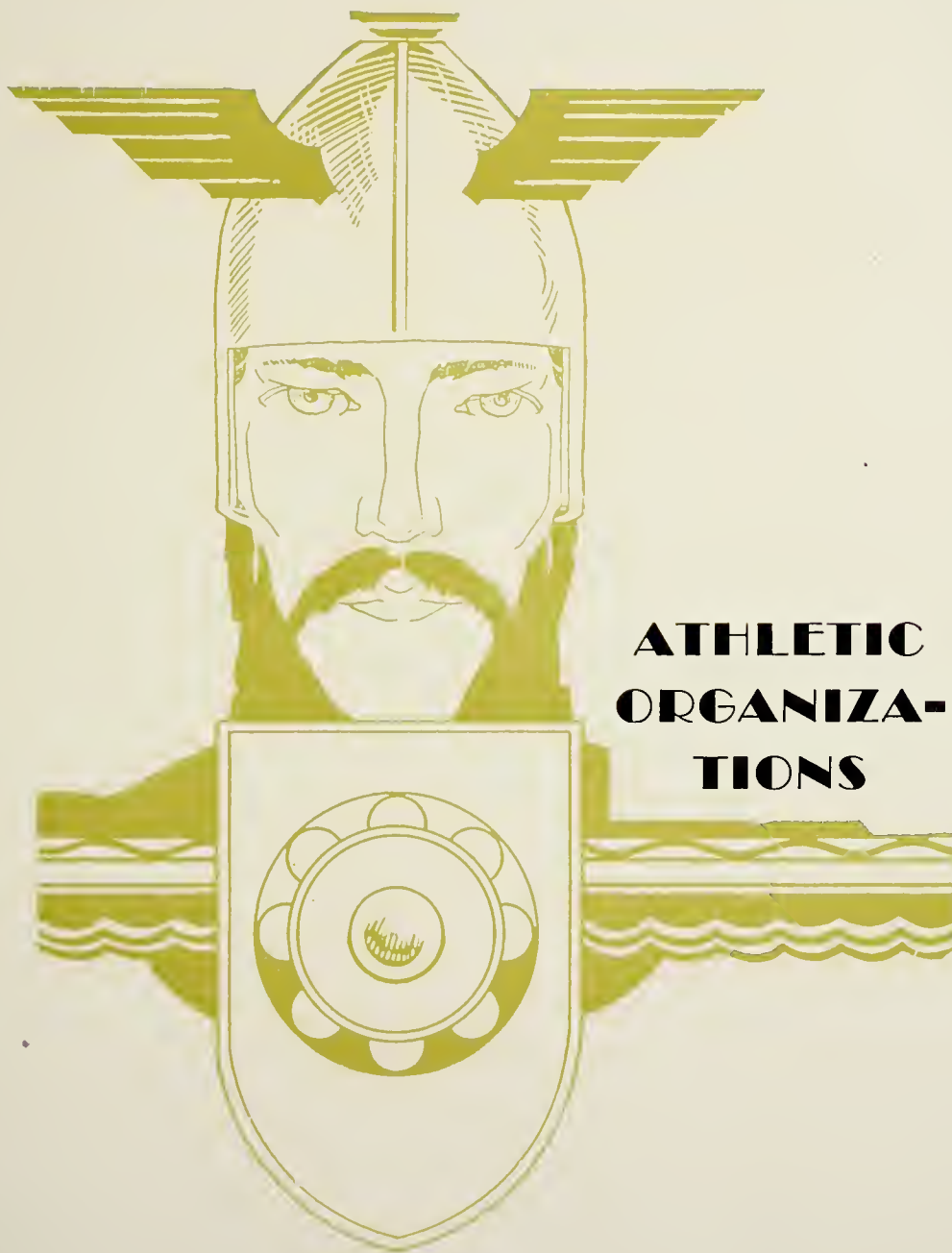
Winter, 1931

The activities of the winter term included basketball, handball, a gym meet and a swimming meet. At the time this book went to press the Kappa Mu Kappa men had won first place in the basketball games; Delta Phi Sigma had taken handball and the swim meet, while the Independents took the gym meet.

The purpose of intramural sports is to give to the mediocre player an opportunity to indulge in healthy endeavor and, to develop fellowship among the men of the college. Varsity men are barred from competition in the various sports and strict rules of eligibility are upheld.







**ATHLETIC
ORGANIZA-
TIONS**



Women's Athletic Association

The Kent branch of the National Women's Athletic Association was organized in May, 1928, for the purpose of furthering the national motto, "Play for Play's Sake". The association is now in its third year of activity at Kent. Any woman student is eligible to membership after she has earned fifty points in sports sponsored by the W. A. A.

All the members are divided into two teams, the Yanks and the Rebels. This furthers the competitive spirit. Sports in which the associations participate are as follows: soccer, basefootball, basketball, volleyball, baseball, horse shoes, bowling, paddle tennis, handball, clogging, archery, tennis, swimming and track meets.

The groups sponsor several all-college functions. The high mark of each year is the annual Circus. The association deserves credit for the splendid way in which it is achieving its goal of "Play for Play's Sake".





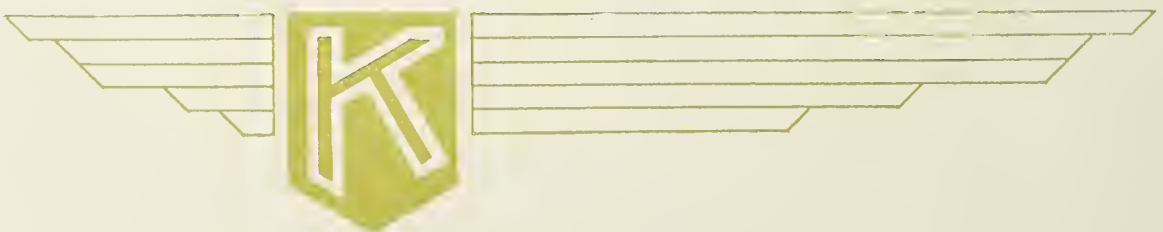
Varsity K Club

After a period of comparative inactivity the club was reorganized this year and has been fairly active to date. The members are those who have won their varsity K in competition at Kent. The several coaches are also members. One of the prime purposes of the club is to prevent the wearing of other than college letters and to create fellowship among the athletes at the college.

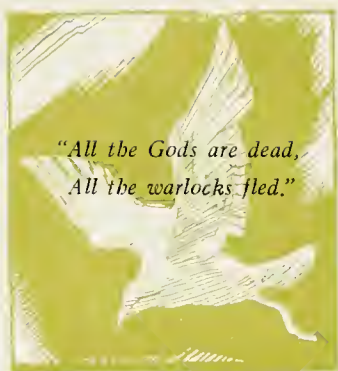
Officers of the club are as follows. President, Frank McCaslin; Vice-Presidents, Arthur Stejskal and Ted Sapp; Treasurer, Walter Taylor, and Secretary, Harland Sickman.



ACTIVITIES











College Social Committee

The college social committee is made up of several faculty members and one student member from each of the four classes and from each of the several representative groups on the campus. It is the policy of the social committee to legislate and provide for all social functions which are in any way connected with the college. It has been the policy in the past to require all organizations wishing to hold or to sponsor a social function to signify such at the proper place and to take the necessary steps toward receiving permission from the committee.

During the past year several worthy changes have taken place. These have given greater liberty to the college students. This is a state school and as such should not be taunted with the fears and scruples of a religious school. It is the policy of the social committee to overcome as fast as possible, the few remaining and antiquated scruples of some of the older members of the faculty.





Women's League

<i>President</i>	- - - - -	HELEN MACCURDY
<i>Vice-President</i>	- - - - -	HARRIETTE CRAWFORD
<i>Secretary</i>	- - - - -	MARGARET PORTER
<i>Treasurer</i>	- - - - -	PAULINE SERRETT

The Women's League is much like the Men's Union in that it automatically includes all women in school. The league sponsors several social functions such as the Big and Little Sister Teas, the New Year's Ball and the Sunset Dances. The women of the faculty are included as honorary members.





Men's Union

CHAIRMEN

CHARLES DUNN	-	-	-	-	-	-	Delta Phi Sigma
DWIGHT MYERS	-	-	-	-	-	-	Sigma Tau Gamma
LOUIS FOGG	-	-	-	-	-	-	Kappa Mu Kappa
HARRY RUTTER	-	-	-	-	-	-	Independents

The Men's Union automatically includes in its membership all the men in the college, both on the faculty and in the student body. It sponsors annual events including the New Year's Ball and other all-college functions. The aim and the hope of the group is to advance good will and fellowship among the men of the college.



Kent State Council

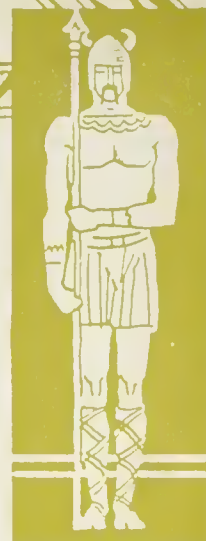
Membership in the Council is composed of one representative from each men's organization, The Pan-Hellenic Association, The Women's League, The Off Campus Women, and the Dormitory Women. The Dean of Women and the Dean of Men are the advisors of the group and work with the members in all matters.

Many activities were sponsored by the Council during the year. An assembly, at which the Freshmen were received by the upper classes, was under their direction. This is a valuable custom and it is hoped that it will be preserved as an annual function.

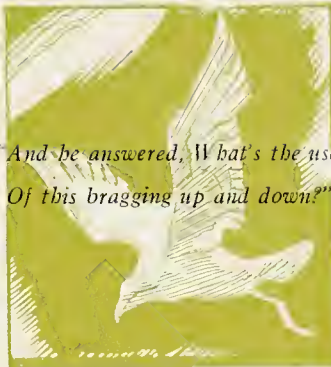
Class elections were under the direction of the Council, as was the Red Cross drive for this year.

The Council meets once a month to discuss problems arising from student activities and to solve them in so far as it is in its power to do so.

Kent State Council through acquisition of more power each year is becoming an important organization on the campus. Its progress is to be commended, for student government is a sign of a growing institution.



*"And he answered, What's the use
Of this bragging up and down?"*







ELDON F. SCOUTTEN, *Editor*

The Chestnut Burr Staff

The staff of the Chestnut Burr has endeavored to produce the best book in the history of the college. It is for the students to decide. The book was produced two months earlier than ever before and over 1000 copies were sold. This alone is something of which to be proud. The book is the product of the students of the college. Certain grievances there are because of the difference of opinion among the college faculty as to just how the book should be edited. Certain selfish individuals evidently wish to make the Burr a product of their departments. It is actually a product of the student body. The work throughout, wherever feasible, has been done by students. We have accepted the bitterness dished up to us and borne the slanders piled upon us with the sustaining philosophy that, after all, this is life. The outcome of it all is this book. We hope you will like it.



Staff Members



JAMES N. HOLM
Business Manager

Editorial:

ARTHUR HOMMEL
PHIL BARRY
JOE KELLEY
HARRIETTE CRAWFORD
KATHRINE FAULK
HAROLD JONES
ROBERT BLYTHE
MARY DONZE
POLLY SAWYER
MAXINE HENDERSON
MARY DONZE

Business:

LEO LOWER
LEONARD BAKER
RUSSELL BROOKS
ARTHUR PEEBLES
JOHN WILSON
JOE DAY
ARLEIN BROWN
DON HOUSLEY
MARION HUNTER
ROBERT DIDHAM





HAROLD R. JONES, *Editor*

The Kent Stater

One of the finest things about Kent State College is our weekly newspaper. Edited by Harold Jones and supervised by Buryl Engleman, it represents the highest type of collegiate journalism.

It provides a weekly mirror to the events of the campus. With its non-partisan policy, its freedom from fraternity and sorority politics and its modern outlook, it is truly a paper of which to be proud.

As a charter member of the Ohio Collegiate Newspaper Association, it sends two delegates every year to the annual meetings.

Through the efforts of Jones, the meeting will be held at Kent next fall. A list of the staff members is to be found on the adjoining page.



Staff



BURYL ENGLEMAN
Faculty Adviser

JOE KELLEY	- - - - -	<i>Assistant Editor</i>
ART HOMMEL	- - - - -	<i>Assistant Editor</i>
GEORGE BARNETSON	- - - - -	<i>News Editor</i>
HARRIETTE CRAWFORD	- - - - -	<i>Society Editor</i>
MARJORIE RUSSELL	- - - - -	<i>The Dabbler</i>

Reporters:

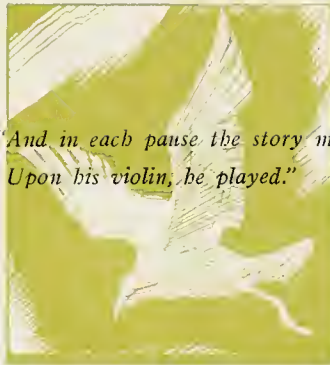
ARTHUR PEEBLES
ROBERT BLYTHE
CHARLES DEMIAN
EVELYN DICK
MARY DONZE
PHIL ENGLEMAN
KATHRYN FAULK
CHARLOTTE FERRARI

MARIAN FULMER
HAROLD GEAR
HILDEGARDE HALAMA
ERNEST KECK
KENNETH KIRK
JOHN MCFARLAND
HELEN MACCURDY

MAXINE MCORE
RILEY RUNK
POLLY SAWYER
INGRID SMERLING
ANNA TESCHER
JULIA VAN COURT
MARGARET VAN WINKLE
GLEN OYSTER



*"And in each pause the story made,
Upon his violin, he played."*





MUSIC
AND
DRAMA



Kent State Band

The past year has been the most successful year in the history of the Kent State Band. The band, under the direction of Mr. Roy D. Metcalf made its first appearance in foreign fields at the Capitol football game. Its appearance there as well as at all home games was a step forward of which the college should be proud. To know that supporters are behind them away from home as well as at home, is a great inspiration to the college teams.

Financial difficulties kept them from attending other games abroad. It is hoped that such trouble will not appear in coming years.





Orchestra

The College Orchestra under the direction of Professor Roy D. Metcalf is one of the fine things at Kent. Offering a credit to those interested, it produces the appreciation of fine music, and turns out a creditable production whenever it performs. It has been used at several dramatic productions.





Glee Clubs

When one stops to count the various things which the students of Kent State are doing, one immediately thinks of the glee clubs. These clubs are composed of anyone in the college who may wish to avail himself of the opportunity to indulge in food for the aesthetic senses and at the same time gain college credit.

Both groups are under the direction of the Music Department and are supervised by Miss McClafflin.

The various concerts which they have produced and the various recitals which they have given in chapel are proof enough of the fine work which they are doing.

Officers for the year are:

<i>President</i>	-	-	-	-	-	-	-	GEORGE WARMAN
<i>Secretary-Treasurer</i>	-	-	-	-	-	-	-	ARTHUR PEEBLES
<i>Librarian</i>	-	-	-	-	-	-	-	FOREST HAWK





Our New Theatre

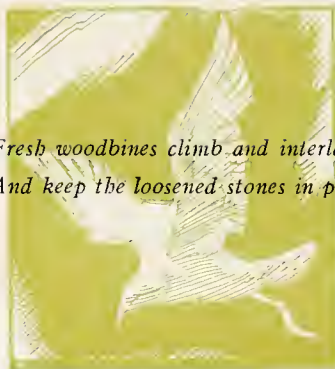
This spring marked the opening and dedication of our new and re-modeled theatre and auditorium. The stage as it now stands is the largest college stage and the most completely equipped in the state of Ohio. There are only two other stages in the colleges of the nation which are greater than ours. One is at Yale and the other is at the University of Michigan.

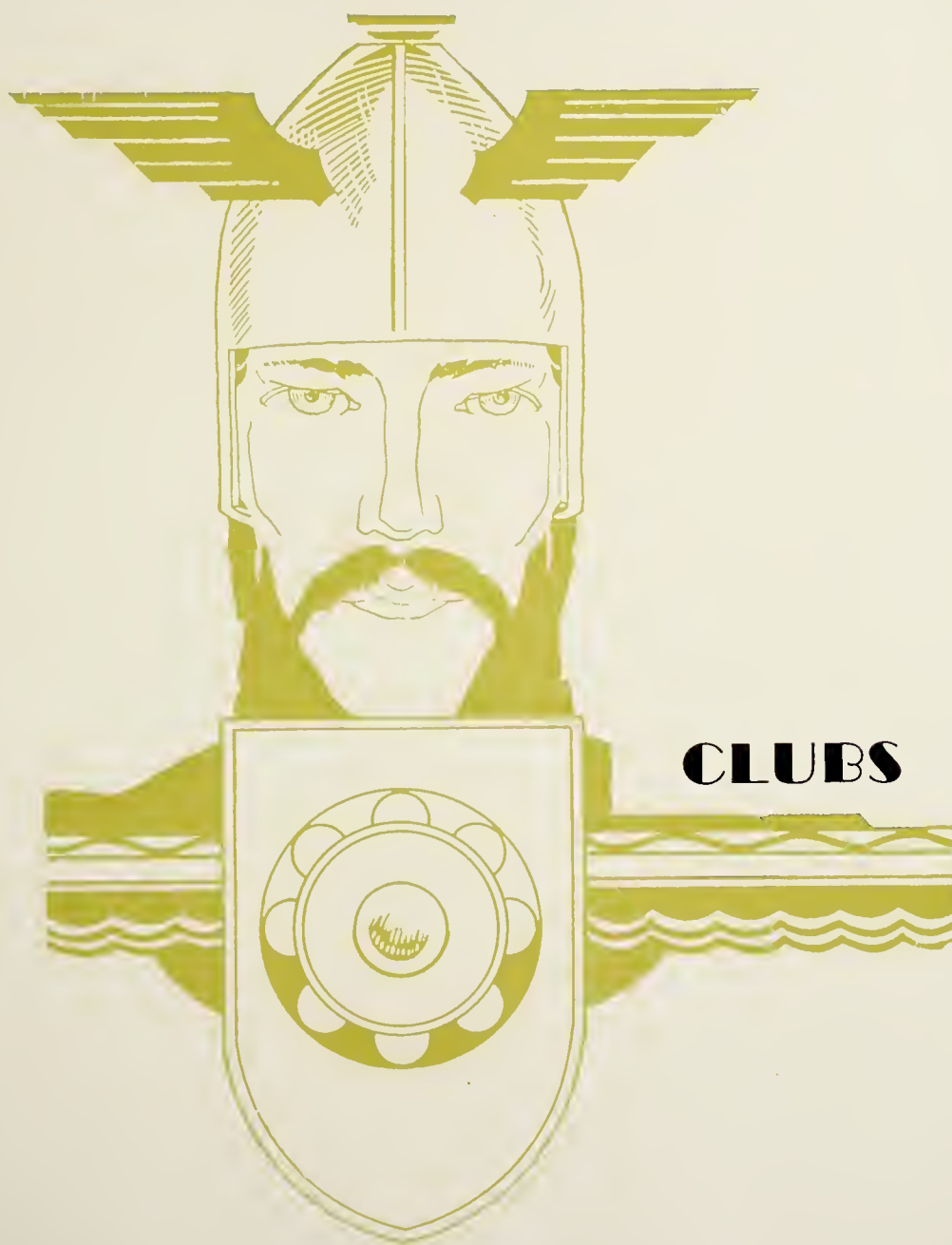
The equipment which has been installed on and in our stage is of the finest. The equipment and the stage itself is an exact duplicate of the stage of the Playhouse in Cleveland.

The senior class of Kent State College has been interested in such a development for the last four years. Now that we have it, even though that class can never enjoy it, that class is grateful to the administration and to the State of Ohio that they have given to our students, such an unusual opportunity as is represented in the new college theatre.



*"Fresh woodbines climb and interlace,
And keep the loosened stones in place."*







Mathematics Club

The Mathematics Club was organized in January, 1931. The officers elected were:

<i>President</i>	- - - - -	EDNA TRINTER
<i>Secretary</i>	- - - - -	VIDA KUMSE
<i>Faculty Advisors</i>	- - {	PROFESSOR R. E. MANCHESTER
		DR. H. E. STELSON

MEMBERS:

D. C. ABBOTT	CLARKE MUSSER
D. M. BROCKLEHURST	CARL PFENNIGER
J. E. COMER	MARCELLA RUSH
S. J. FEAR	REGENA STAMM
MICHAEL HERCHEK	EDWARD STONE
L. HOSTETLER	ELEANOR STONE
W. E. KINCAID	LUCILLE THOMAS
VIDA KUMSE	EUGENE TRAXLER
LOWER KELLOG	EDNA TRINTER
FRANK KUNST	CHALMERS WEAVER
ELDRED MILLER	SAMUEL FIORENZO
LUCILLE MCKIERMAN	ADOLPH SCHANDEL
HERALD MOORE	VIRGIL COBB

PAULINE PARDEE





Home Economics Club

The Practice House which was opened in 1930 as a laboratory for the Home Economics Majors, continues to be a center of interest to the members of the club. Curtains, rugs and other furnishings were purchased for the house with money earned. The Practice House also serves as a club house where many social gatherings are held.

The activities of the club are varied. Open house was held during freshman week. Its residents have entertained many members of the faculty. The club is attempting to earn enough money to send delegates to the annual meeting of the American Home Economics Association at Detroit, this summer.

The officers of the club are:

<i>President</i>	-	-	-	-	-	-	DOROTHY SUTHERBY
<i>Vice-President</i>	-	-	-	-	-	-	JEANNETTE WHEELER
<i>Secretary</i>	-	-	-	-	-	-	RITA SPAFFORD
<i>Treasurer</i>	-	-	-	-	-	-	CATHERINE CUMMINGS





The French Club

The membership of the French Club is drawn from the students enrolled in the French classes of the college. The club has an active membership roll of over twenty. Various social and intellectual gatherings are held periodically throughout the year. At each of these gatherings some member of the club presents a discussion on a certain phase of French life. All business and conversation of the club is carried on in the French language.

The club is sponsored by and is under the direction of Miss Belle Rowlen, the instructor in French and the faculty advisor to the group. The official name of the club is "Le Cercle".





The Off Campus Women's Club

This organization is composed of women of the college who are living off the campus, and it is one of the oldest and most active groups in the college. Its purpose is to give the members the same opportunity for social life as is afforded to the remainder of the students who are affiliated with other organizations. The club room is located on the second floor of Merrill Hall and is a center of rest and recreation for all the members.

The club's activities are varied and include some main things each quarter. The officers are:

<i>President</i>	-	-	-	-	-	-	LUCILE TRUSCOTT
<i>Vice-President</i>	-	-	-	-	-	-	ALICE HINDS
<i>Secretary</i>	-	-	-	-	-	-	RUTH JOY
<i>Treasurer</i>	-	-	-	-	-	-	LUCILLE EWELL





Alpha Psi Omega

The Beta Psi cast of Alpha Psi Omega is the only national honorary fraternity on the campus. The fraternity which has over ninety active chapters, or casts as they are called, presents at least one play every year. The production of "Dust of the Road", under the direction of Professor E. Turner Stump, was one of the high spots of the college year.

The local cast is headed by James Holm while the National Director and founder is E. Turner Stump, of Kent.

At present the fraternity boasts a membership of over one hundred persons, thirty of which are members of the active and pledge chapters.



Physical Education Club

The Physical Education Club of Kent State College was organized in the fall quarter of 1928. Membership is open to all majors and minors, and members of the Health and Physical Education faculty.

At the first business meeting the following officers were elected:

<i>President</i>	- - - - -	VICTOR MOORE
<i>Vice-President</i>	- - - - -	CATHERINE CONROY
<i>Secretary-Treasurer</i>	- - - - -	LUELLA KING

The advisors are: George Altmann and Miss Ruth Bass.

The club sponsors two functions each term; one a social, the other a business meeting. The first social meeting of the year 1930-1931 was a banquet at Hotel Franklin. Mr. Rowe, of the Cleveland schools, addressed the seventy members present.

Plans for the winter and spring quarters include outdoor social meetings in addition to the business meetings.



The Kindergarten-Primary Club

This club, organized in 1929, is composed of students who are majoring in Kindergarten-Primary work. The club is a branch of the national organization called the Association of Childhood Education. At present the club has an active roll of seventy-five members. It takes a large part in the charity and educational work of the college and of the city.

The officers of the club are:

<i>President</i>	- - - - -	ELIZABETH LUDT
<i>Vice-President</i>	- - - - -	OLIVE BUMPHREY
<i>Treasurer</i>	- - - - -	MARGARET CARROLL
<i>Corresponding Secretary</i>	- - - - -	LENA HEIDELBERG
<i>Recording Secretary</i>	- - - - -	LUCILLE TRUSCOTT
<i>Faculty Advisor</i>	- - - - -	MISS SWAN



Independent Men's Club

The membership of this club is drawn indiscriminately from the men who have not become affiliated with any fraternal order. The club members participate in intra-mural activities with the men from the three fraternities. The club has certain social functions periodically and last year issued a challenge to the fraternities to meet them in euchre, chess, ping pong and other games. The membership is not binding and the members are at liberty to drop out at any time if a chance to join a fraternity should arise.

<i>President</i>	- - - - -	WILFRED SLATER
<i>Vice-President</i>	- - - - -	ARTHUR TUMPACH
<i>Secretary-Treasurer</i>	- - - - -	WALTER SHAMMO
<i>Faculty Advisor</i>	- - - - -	MR. HARBOURT





Y. W. C. A.

This group which is a branch of the national organization, initiated one hundred and twenty-seven members last fall at a very impressive service. Various picnics and social functions are sponsored each year. Charity plays a big part in the activities of the group.

The regular meetings are conducted every week at 312 Merrill. The group sends certain delegates to the state convention each year.

The officers of the club are:

<i>President</i>	- - - - -	RUTH LYTLE
<i>Secretary</i>	- - - - -	ELEANOR STONE
<i>Treasurer</i>	- - - - -	DOROTHY McCLELLAND
<i>Faculty Advisor</i>	- - - - -	DEAN VERDER



Y. M. C. A.

With a marked increase in membership, the Y. M. C. A. began its second year as a student organization of the college in the fall of 1930. Regular weekly meetings were held in Merrill Hall on Wednesday evenings.

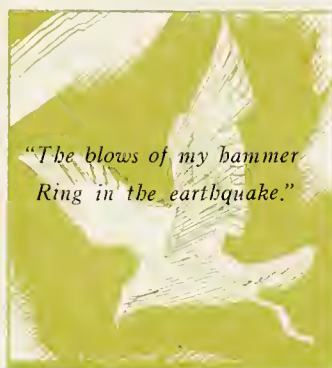
The following members were elected and installed in office:

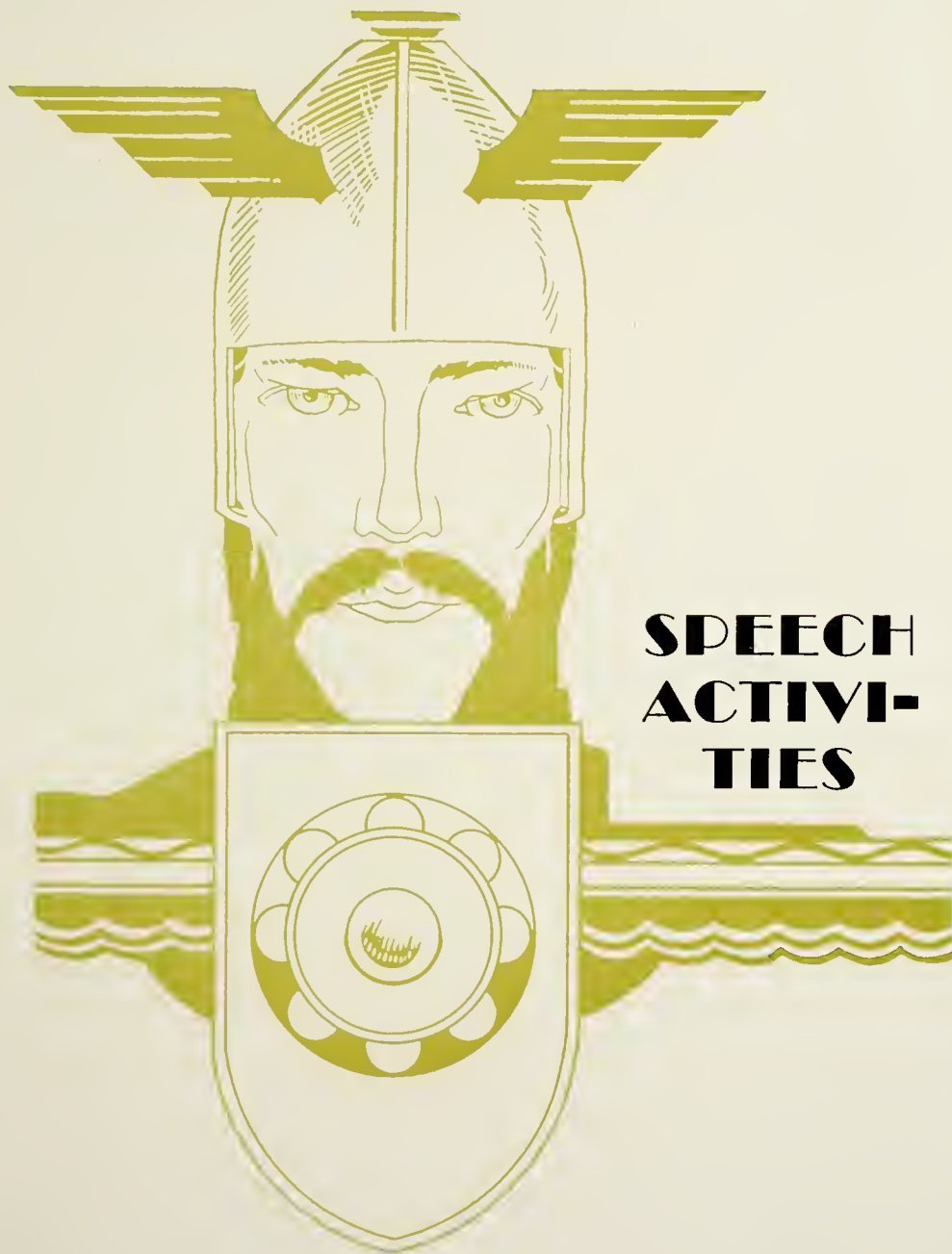
<i>President</i>	- - - - -	WALTER SHAMMO
<i>Vice-President</i>	- - - - -	FRANKLIN WILLIAMS
<i>Secretary</i>	- - - - -	CLAYTON ALDEN
<i>Treasurer</i>	- - - - -	ARTHUR TUMPACH
<i>Council Representative</i>	- - -	GEORGE MCCAGUE
<i>Publicity Chairman</i>	- - -	JOHN MCFARLAND
<i>Faculty Advisor</i>	- - -	PROFESSOR EDWARD PAKE

The Y. M. C. A. has a physical, mental, social, and spiritual aspect to its functions. The physical side is evidenced in meetings in the gymnasium. The club has suppers, roasts, and parties for its members. In its live, up-to-date discussions, a medium for developing ideas and thoughts is furnished. Finally in every way, the members try to build up characters of strong moral and spiritual fibre.

Every man who attends the college, is eligible to join the Kent State Y. M. C. A.









Men's Debate

All worthwhile institutions start with a small and not always successful beginning.

Kent State entered intercollegiate debate circles in 1929 when three members of the present Senior class took part in a debate with Hiram College. This beginning was unsuccessful as far as immediate victory was concerned, but it was successful in that it created interest in the forensic art and showed possibilities of development.

In 1929-1930 Kent State debate teams under the direction of Professor Pake, took part in four intercollegiate debates.

This year, as a member of the Northern Ohio Debate League and under the coaching of Professor E. T. Stump, debating has progressed rapidly. Due to the fact that our team was the only team in the state able to defeat the Akron University team, which later won the State championship, it is hoped that we will be admitted to the Ohio Conference next season.

The squad this year is composed of James Holm, Eldon Scoutten, Phil Barry, Ralph McGinnis, Robert Blythe, and Thomas Carothers.





The Women's Debate Squad

This year, under the direction of Professor E. Turner Stump, the college sponsored the first girls' debate team in its history. Answering the call early in the year, the members prepared speeches and arguments on the subject of State Medicine. Debates were held with Akron University, Hiram and Mt. Union. All were no-decision contests.

The squad is as follows: Susan Bare, Louise Hamilton, Lois Scott, Anne Conrad, and the coach, Professor Stump.





Oratory

This year was the first that Kent State College ever sent a representative to the state contest in oratory. Early in March several students tried out for the privilege of representing the school and Eldon Scoutten was selected to compete at Alliance. The subject of the oration was "Peace".

Those competing for the local championship were: James Holm, Ralph McGinnis, Phil Barry and Eldon Scoutten.





Chi Pi

The Chi Pi fraternity of Kent State College is an honorary one made up of members elected by the active chapter, after such members have done meritorious work in the field of journalism and its several phases. The group is divided into four divisions; the printer's devils, the cub reporters, the star reporters and the editors. The members are awarded the various degrees as their work merits. The present chapter is composed of the Editor of the Kent Stater, Harold Jones; the Editor of the Chestnut Burr, Eldon Scoutten; the Business Manager of the Chestnut Burr, James Holm, and the oldest reporter from a standpoint of service on the paper, Arthur Peebles.

The group once boasted a membership of thirty. Professor Packard is the faculty advisor and Professor Buryl Engleman is an honorary member.



FRATERNAL ORGANIZATIONS









FRATER- NITIES



Delta Phi Sigma

FOUNDED AT KENT, OHIO, MARCH 9, 1924

OFFICERS

<i>President</i>	- - - - -	ELDON SCOUTTEN
<i>Vice-President</i>	- - - - -	JAMES HOLM
<i>Secretary</i>	- - - - -	ROBERT DIDHAM
<i>Treasurer</i>	- - - - -	EDWIN HIRT
<i>Historian</i>	- - - - -	ARTHUR PEEBLES
<i>Sargeant at Arms</i>	- - - - -	ARTHUR STEJSKAL
<i>Chaplain</i>	- - - - -	MERLE LEGGITT

ACTIVES

ELDON SCOUTTEN
JAMES HOLM
ROBERT DIDHAM
EDWIN HIRT
ARTHUR PEEBLES
ARTHUR STEJSKAL
MERLE LEGGITT
GEORGE WARMAN
PHIL BARRY
LEO LOWER
CHARLES DUNN

LESTER SABIN
HAROLD JONES
DONALD HOUSLEY
DON STRAUB
WILLIAM LANGELL
JOHN WILSON
CORVIN GERIG
HERVEY STAHL
HAROLD GEAR
EARL WRIGHT
ORIN SMUCKER
HENRY WILLETT

ARTHUR HOMMEL
EUGENE TRAXLER
ELDRED MILLER
FOREST HAWK
WILLIAM BROZ
JAMES SHELLEY
LESLIE CHAPMAN
MYRON WARNES
LARRY NICHOLSON
LWELL KILBOURNE
WILLIAM EDMISTON

PLEDGES

CARL MEEKER
RICHARD KINNEY
BURTON BELL
JAMES EATON

KENNETH HISSNER
ELMER DUNLAVY
GERALD LEONARD

HAROLD LAW
KENNETH KIRK
RILEY RUNK
KARL FALLS

Faculty Advisor DR. A. L. HEER.

Honorary Members: E. TURNER STUMP, D. W. PEARCE.







Kappa Mu Kappa

FOUNDED 1922

OFFICERS

<i>President</i>	- - - - -	GORDON KELSO
<i>Vice-President</i>	- - - - -	TED SAPP
<i>Treasurer</i>	- - - - -	HARLAND SICKMAN
<i>Recording Secretary</i>	- - - - -	JOE KELLY
<i>Corresponding Secretary</i>	- - - - -	CLYDE HALL
<i>Scribe</i>	- - - - -	WARD SECRIST
<i>Master of Works</i>	- - - - -	JAMES MENOUGH
<i>Prelate</i>	- - - - -	LOUIS FOGG
<i>Sargeant at Arms</i>	- - - - -	HARLEY SEISS
<i>Board of Governors</i>	- - - - -	{ ELMER PETTAY TED SAPP KERMIT TAYLOR

Kappa Mu Kappa is the oldest fraternity at Kent. The members of the group are found in all functions of the school, particularly athletics.

ACTIVES

EDWARD SPINNEWEBER
JAMES MENOUGH
FRANK McCASLIN
GORDON KELSO
TED SAPP
EDWARD HARRIS
EVERETT JOHNSON
ELMER PETTAY
CHARLES KILBOURNE
HARLEY SEISS
CLYDE HALL
LOUIS FOGG
HARLAND SICKMAN

GOMER LEWIS
WILLIAM LANE
WARNER CUNNINGHAM
WARD SECRIST
ELWOOD MURPHY
JOHN MENSTER
WILLIAM DISBRO
D. C. ABBOTT
DONALD ROBINSON
JOSEPH KELLEY
ROY GILMORE
KERMIT TAYLOR
WALTER HAGERDON

PAUL BRAND
CHARLES SCOTT
FRANK FANNELLY
ALVA SAPP
D. E. WHITE
KENNETH WEICHEL
LEONARD LAWRENCE
PHILIP CAPOZZI
LUTHER GARDNER
CLARENCE CUMMINGS
THOMAS JENKINS
CHARLES HICKSTEAD
D. AUSTIN GRUBB

PLEDGES

ROBERT CHORPENING
TED EVANS

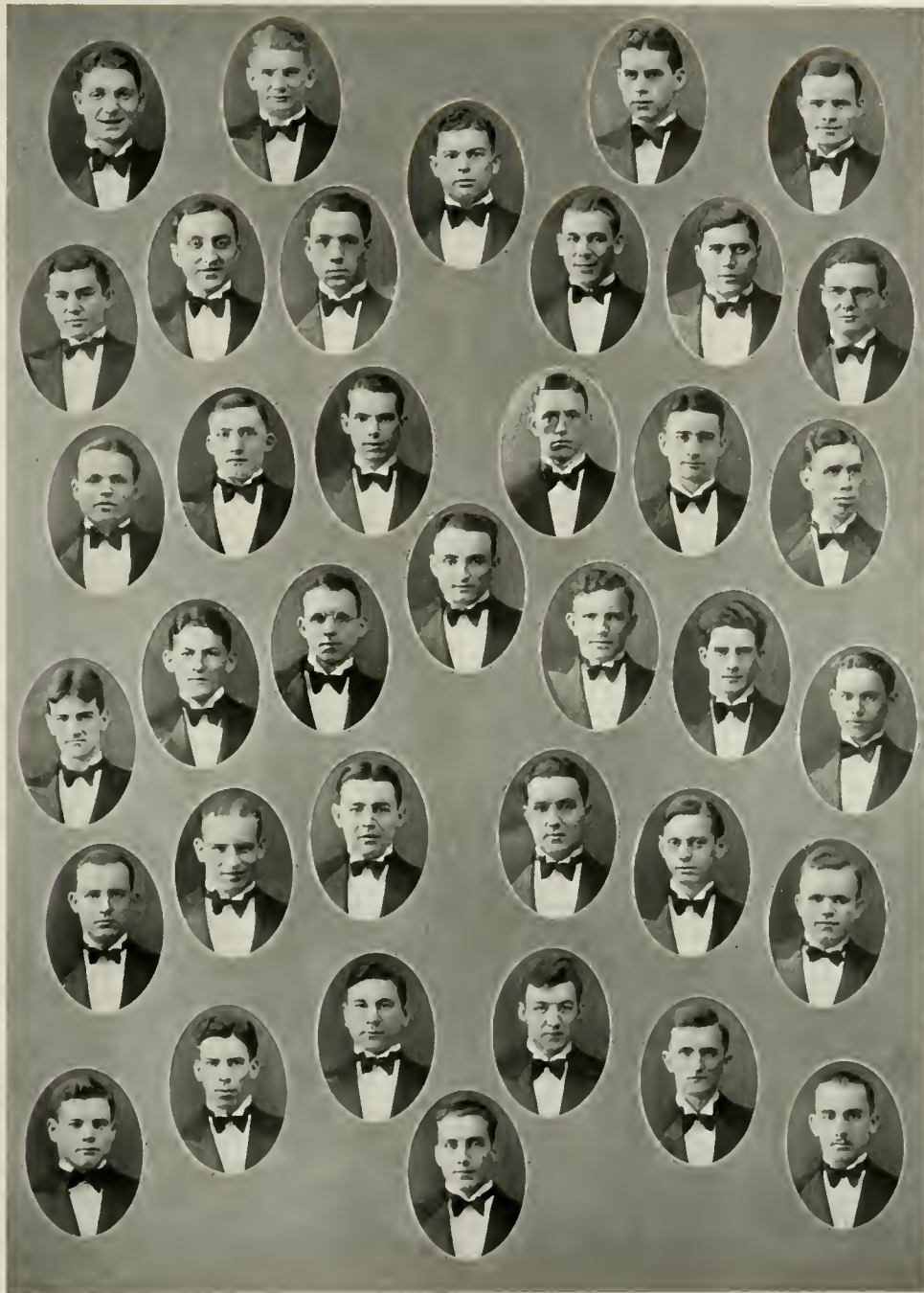
MATTHEW FLOWERS
WILLIAM HEBER
RICHARD MANSFIELD

AL LOSITO
CLIVE LUKENS

Faculty Advisor: T. E. DAVEY

Patrons: DR. A. S. ROBERTS, S. A. HARBOUR, DICK DONAGHY







Sigma Tau Gamma

INSTALLED AT KENT 1927

OFFICERS

<i>President</i>	- - - - -	MERLE BAKER
<i>Vice-President</i>	- - - - -	ANTHONY ROSS
<i>Treasurer</i>	- - - - -	LEONARD BAKER
<i>Recording Secretary</i>	- - - - -	WATT BAIR
<i>Corresponding Secretary</i>	- - - - -	DELBERT CLINE
<i>Historian</i>	- - - - -	WILLIAM SPRAGUE
<i>Sergeant at Arms</i>	- - - - -	DAVID BAUGHMAN
<i>Faculty Advisor</i>	- - - - -	E. C. STOPHER
<i>Business Manager</i>	- - - - -	DWIGHT MYERS

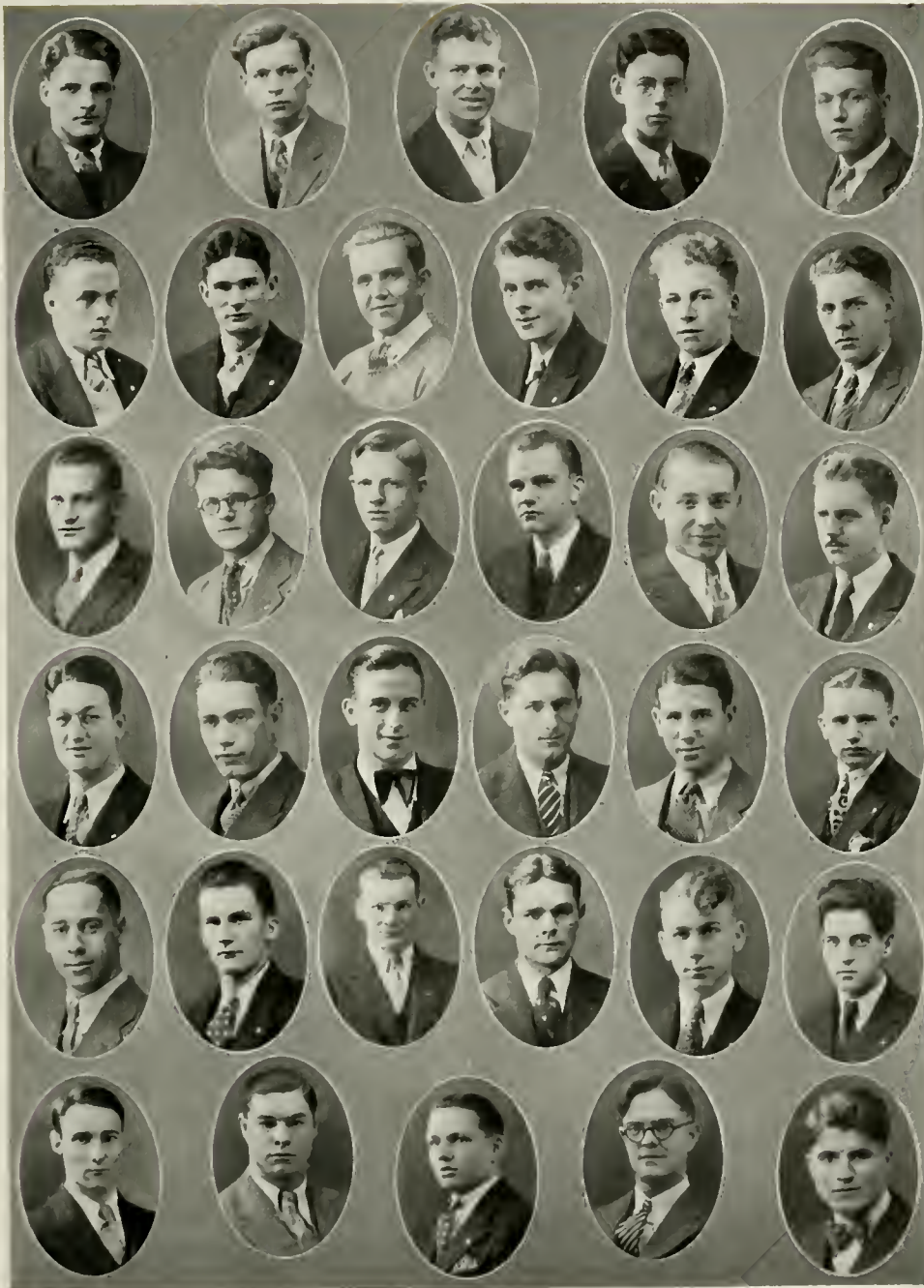
ACTIVES

WATT BAIR	DELBERT CLINE	SEYMOUR FEAR
GLADE BOWMAN	DONALD CLIMES	GEORGE FUDGE
GEORGE MCCAGUE	PHILIP ENGLEMAN	NELSON GAUGER
DWIGHT BROCKLEHURST	LINWOOD FREEMAN	DEAN GINTERT
FRED DREW	MICHAEL MARO	JERRY JOHNSON
WILLIAM SPRAGUE	ANTHONY ROSS	GENE McABEE
MARION HUNTER	PRICE CHAMBERLAIN	ROBERT MULLETT
DAVID BAUGHMAN	FRED SWARTZ	ROBERT MILLS
LAWRENCE PHILIPS	RUSSELL BROOKS	WILLIAM MARTIN
LAWRENCE GATCHEL	ROBERT BLYTHE	BEULL STRINGER
MERRILL MILLS	THOMAS CROTHERS	HAROLD SCHAMP
LEONARD BAKER	JOE DAY	ALTON SCHOPFER
MERLE BAKER	CHARLES DEMIAN	LEON HODGKINS

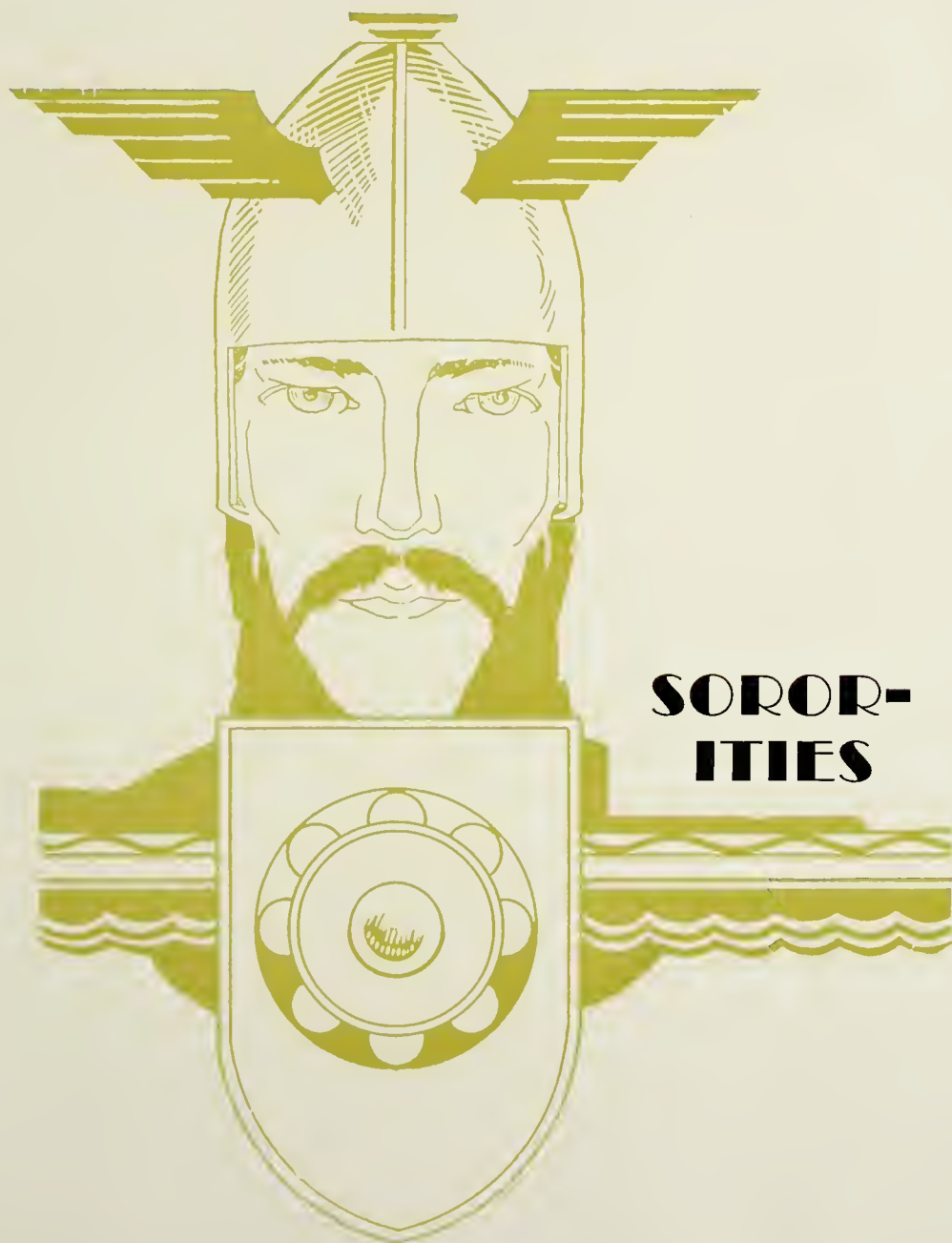
HONORARY MEMBERS

DR. A. W. STEWART	DR. A. O. DeWEESE	B. F. ENGLEMAN
-------------------	-------------------	----------------









SOROR- ITIES



Sigma Sigma Sigma

INSTALLED AT KENT 1925

OFFICERS

<i>President</i>	- - - - -	MARIAN PALMER
<i>Vice-President</i>	- - - - -	MARION MOUAT
<i>Recording Secretary</i>	- - - - -	DOROTHY OTT
<i>Corresponding Secretary</i>	- - -	CORNELIA STEWART
<i>Treasurer</i>	- - - - -	ADELAIDE WALKER
<i>Advisor</i>	- - - - -	MONA FLETCHER
<i>Sentinel</i>	- - - - -	HELEN WILLITS

ACTIVES

MARIAN PALMER
MARION MOUAT
CORNELIA STEWART
DOROTHY OTT
ADELAIDE WALKER
HELEN WILLITS

AGNES ALBRIGHT
MAXINE HENDERSON
HELEN MACCURDY
OLIVE BUMPHREY
LUCILLE TRUSCOTT
MARIAN FULMER
FREDA LANG

MARY BECKWITH
EDITH PETRE
RUTH LYTLE
HELEN THORPE
EVELYN DAVIS
EMILY FARNUM

PLEDGES

MARY IRVIN
DOROTHY GUY
SUSIE PALFI

MILDRED THOMAS
RUTH CAUGHEY

VIRGINIA LYTLE
ELEANOR YOCUM
PAULINE TERRET

PATRONS AND PATRONESSES

MR. AND MRS. E. C. STOPHER DR. AND MRS. A. SELLEW ROBERTS
MR. AND MRS. G. FRANK ELGIN



Delta Sigma Epsilon

INSTALLED AT KENT 1926

OFFICERS

<i>President</i>	- - - - -	MARGARET FLEPS
<i>Vice-President</i>	- - - - -	MARGARET MELIN
<i>Treasurer</i>	- - - - -	MARTHA JOHNSON
<i>Recording Secretary</i>	- - - - -	RUTH SWANEY
<i>Corresponding Secretary</i>	- - - - -	ALICE LAIRD
<i>Chaplain</i>	- - - - -	HILDEGARDE HALAMA
<i>Advisor</i>	- - - - -	ORA BELLE BACHMAN

ACTIVES

MARGARET FLEPS	ARLEIN BROWN	DODDALEEN LEHMAN
MARGARET MELIN	ALICE LAIRD	OLGA BURICK
MARTHA JOHNSON	RUTH REICHARD	ORA BELLE BACHMAN
RUTH SWANEY		HILDEGARDE HALAMA

PLEDGES

EDYTH AVERY	CLAUDIA CLEVANGER	HELEN DUNSTON
EVA JOHNSON	MARJORIE RUSSELL	PAULINE CUBBISON
RUTH KOPP	LUELLA KING	VIRGINIA DANCE
MARY GUILLET		HELEN HOFFMAN





Alpha Sigma Alpha

FOUNDED AT MIAMI UNIVERSITY 1914
OMICRON OMICRON CHAPTER, KENT, 1926

OFFICERS

<i>President</i>	- - - - -	JEANNETTE RIDDLE
<i>Vice-President</i>	- - - - -	GERTRUDE KENNEDY
<i>Secretary</i>	- - - - -	MARY DONZE
<i>Treasurer</i>	- - - - -	POLLY SAWYER
<i>Faculty Advisor</i>	- - - - -	ADA V. HYATT

ACTIVES

HELENE BEITZ
GENEVA BRAND

MARY DONZE
GERTRUDE KENNEDY
EDNA KING

JEANNETTE RIDDLE
POLLY SAWYER

PLEDGES

BETTY ANDERSON
FLORENCE BODMAN
KATHERINE FAULK
LOUISE GROVE
LAUREL HANLEY

MILDRED HALL
BONNIE HART
JANET JONES
LOUISE KIST
MARY JANE MATELSKY
BETTY MOORE

ARDIS REICHARD
BEATRICE SHUTE
HELEN SLOAN
MARY STONER
ZETA WELSHER

FACULTY MEMBERS

MISS ADA V. HYATT

MISS FLORENCE SUBLETTE MISS HELEN MCCLAFLIN

PATRONS AND PATRONESSES

MR. AND MRS. STEVE HARBOURT

MR. AND MRS. MERLE WAGONER



Theta Sigma Upsilon

INSTALLED AT KENT 1926

OFFICERS

<i>President</i>	-	-	-	-	-	-	-	HELEN KROPF
<i>Vice-President</i>	-	-	-	-	-	-	-	KATHERINE VOLOSIN
<i>Secretary</i>	-	-	-	-	-	-	-	HAZEL YOUNG
<i>Treasurer</i>	-	-	-	-	-	-	-	CLEO CROW
<i>Editor</i>	-	-	-	-	-	-	-	MARTHA DURBIN
<i>Faculty Advisor</i>	-	-	-	-	-	-	-	MARY KATHRYN BOSWELL

ACTIVES

EVELYN HARROLD
DORIS SHANAHAN
HAZEL YOUNG
HELEN KROPF
DOROTHY QUINLAN

KATHERINE VOLOSIN
DOROTHY MACKEY
HELEN KNOX
CLEO CROW

LEATHA BULLOCK
ALICE CHACEY
MARTHA DURBIN
MILDRED MOULTON
MARIAN FRIEND

PLEDGES

HELEN HALLOWAY
ADELAINE HELLER

MARGARET ACKERMAN
MARGARET VAN WINKLE

HAZEL JONES
ELINOR DISBRO

PATRONS AND PATRONESSES

MR. AND MRS. ERIC GRIEBLING

MR. AND MRS. DWIGHT STEERE





Pi Delta Theta

INSTALLED AT KENT 1928

OFFICERS

<i>President</i>	- - - - -	MARGARET CARROLL
<i>Vice-President</i>	- - - - -	LUELLA CONZETT
<i>Second Vice-President</i>	- - -	LOUISE HAMILTON
<i>Secretary</i>	- - - - -	KATHLEEN O'NEILL
<i>Treasurer</i>	- - - - -	MIRIAM STARKEY
<i>Faculty Advisor</i>	- - - - -	RUTH BASS

ACTIVES

MARGARET CARROLL
LUELLA CONZETT

CATHLEEN O'NEILL
MIRIAM STARKEY

LOUISE HAMILTON
DOROTHY SUTHERBY

PLEDGES

ALICE BOREX

ADELAINE WILCOX

PATRONS AND PATRONESSES

MR. AND MRS. J. T. JOHNSON

DR. AND MRS. J. B. TURNER

MISS ELFELDA LITTLEJOHN



Alpha Sigma Tau

FOUNDED AT YPSILANTI, MICHIGAN, IN 1898

ETA CHAPTER FOUNDED AT KENT STATE COLLEGE IN 1927

OFFICERS

<i>President</i>	- - - - -	MAXINE MOORE
<i>Vice-President</i>	- - - - -	ELIZABETH WILLIAMS
<i>Corresponding Secretary</i>	- - - - -	MILDRED PYLE
<i>Recording Secretary</i>	- - - - -	EDNA EATON
<i>Treasurer</i>	- - - - -	MARTHA BAUMBERGER
<i>Faculty Advisor</i>	- - - - -	MISS LAURA HILL

ACTIVES

MARTHA BAUMBERGER
MILDRED PYLE
ROMAYNE McGRATH
KATHERINE SMITH
MAXINE MOORE

BLANCHE HILLMAN
KATHERINE SCHAAAB
CATHERINE CONROY
ELIZABETH WILLIAMS
EDNA EATON

CLARA RABY
HELEN BUNN
EDYTHE OLIVER
MARGARET ROBERTS
MARGUERITE OYLER

PLEDGES

MILDRED CALL
MARY JANE MANCHESTER
ELIZABETH RUFENER
KATHERINE MYERS

RUTH WAGER
BETTY NOEL
CATHERINE KENNEY
EUNICE HINES
DAMA McVEY

HELEN McCANDLESS
HARRIET CRAWFORD
RUTH PEKAREK
LOIS HANNA

PATRONS AND PATRONESSES

MR. AND MRS. R. E. MANCHESTER

MR. AND MRS. DICK DONAGHY





Pi Kappa Sigma

President - - - - - ELIZABETH LEWIS
Vice-President - - - - - VIRGINIA JOHNSTONE
Corresponding Secretary - - - MARGARET PORTER
Recording Secretary - - - - ELEANOR MANSFIELD
Treasurer - - - - - HARRIET PATTERSON
Faculty Advisor - - - MISS AMANDA THRASHER

ACTIVES

VIRGINIA JOHNSTONE	ELEANOR MANSFIELD	HARRIET WILSON
ELIZABETH LUDT	MARGARET PORTER	AMANDA THRASHER
	HARRIET PATTERSON	

PLEDGES

SHIRLEY GOODWIN	GRACE NAGLE	MARION SASS
RUTH BARNHART	LUCILLE GALLOWAY	GENEVIEVE MCNEAL
VIRGINIA MANSFIELD	WINIFRED EHRLICH	MARGUERITE DOERSCHUG
	VIRGINIA STONE	

PATRONS AND PATRONESSES

MR. AND MRS. R. M. CLARK	MR. AND MRS. T. E. DAVEY
--------------------------	--------------------------



Pi Kappa Sigma

Pi Kappa Sigma was founded at Ypsilanti, Michigan in 1894. It is the oldest and largest national educational sorority. It has twenty-nine active chapters. Psi Chapter was founded at Kent in 1926.

During the year the sorority does charity work of various sorts. An outstanding event of the year was the visit of Mrs. Renz, the second national Vice-President. During the last summer the sorority rented a cottage on one of the lake resorts and several members spent the summer there.





Phi Alpha Alpha

FOUNDED AT KENT STATE COLLEGE, MAY, 1930

OFFICERS

<i>President</i>	- - - - -	ELEANOR STONE
<i>Vice-President</i>	- - - - -	MARJORIE DEISMAN
<i>Secretary</i>	- - - - -	ELSIE CREWSON
<i>Treasurer</i>	- - - - -	CLARA SEYMOUR
<i>Editor</i>	- - - - -	MARJORIE BRIGSTOCK
<i>Faculty Advisor</i>	- - - - -	DORIS BOB KINNEMAN

ACTIVE

Seniors:

MARJORY BRIGSTOCK
VELMA ROOD
ELEANOR STONE

Sophomores:

ALBERT CLARK
ELSIE CREWSON
MARJORIE DEISMAN

HELEN DERR
ANNA HUNYADY
MARDELLA NEAR
CLARA SEYMOUR

PLEDGES

Freshmen:

DOROTHY ESPENCHIED
FAITH SPELLMAN
JOSEPHINE TAFT

Sophomores:

RUTH APLEY
ETHEL ETLING
VELMA DE FORD
RUTH WATKINS

Juniors:

LUCILE EWELL
ALICE HINDS

Seniors:

FRANCES TYLER
CATHERINE WALKER

PATRONS AND PATRONESSES

MR. AND MRS. FRED MUSSELMAN

DR. AND MRS. A. W. STEWART





Backword

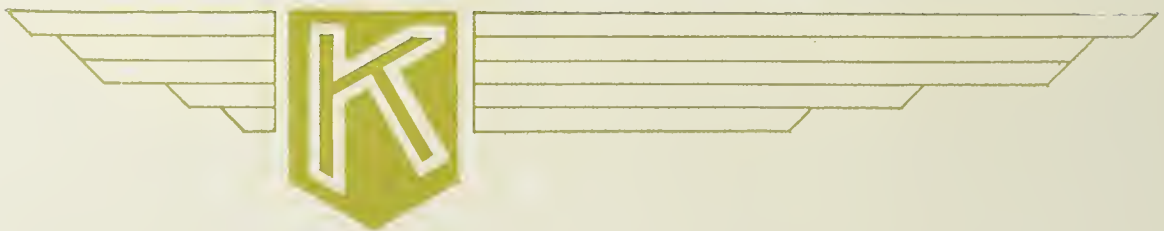
The Editors of this book wish to present it with the sincere belief that it, in some measure, mirrors the activities of the college. The various organizations will doubtless find much to criticise. The various departments will find much upon which to base unfavorable agitation. No group will feel that it has been given due consideration and respect. But all this is of little import.

The book was planned to apportion the pages as they deserve apportionment; not with the view of favoring one group or one class, but with the idea of presenting the campus life in its true proportions.

The editors hope that in future years, the various factions of the college will withhold selfish motives and strive to assist in the production of a truly good book.



FEATURES







MAXINE MOORE
—
MOST POPULAR WOMAN





GEORGE WARMAN
MOST POPULAR MAN

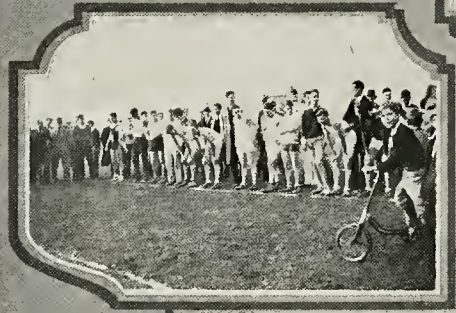
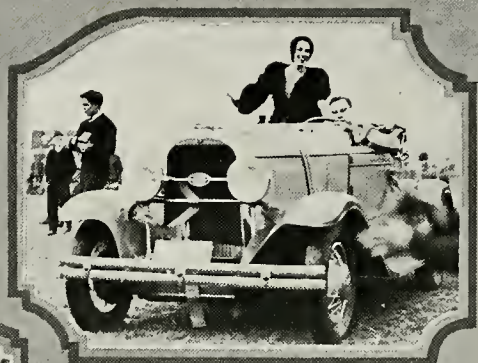




MARY DONZE
CAMPUS QUEEN





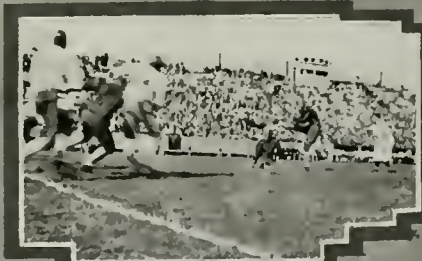
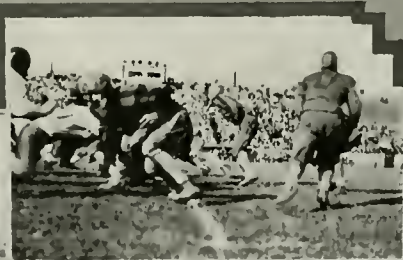


HOME COMING





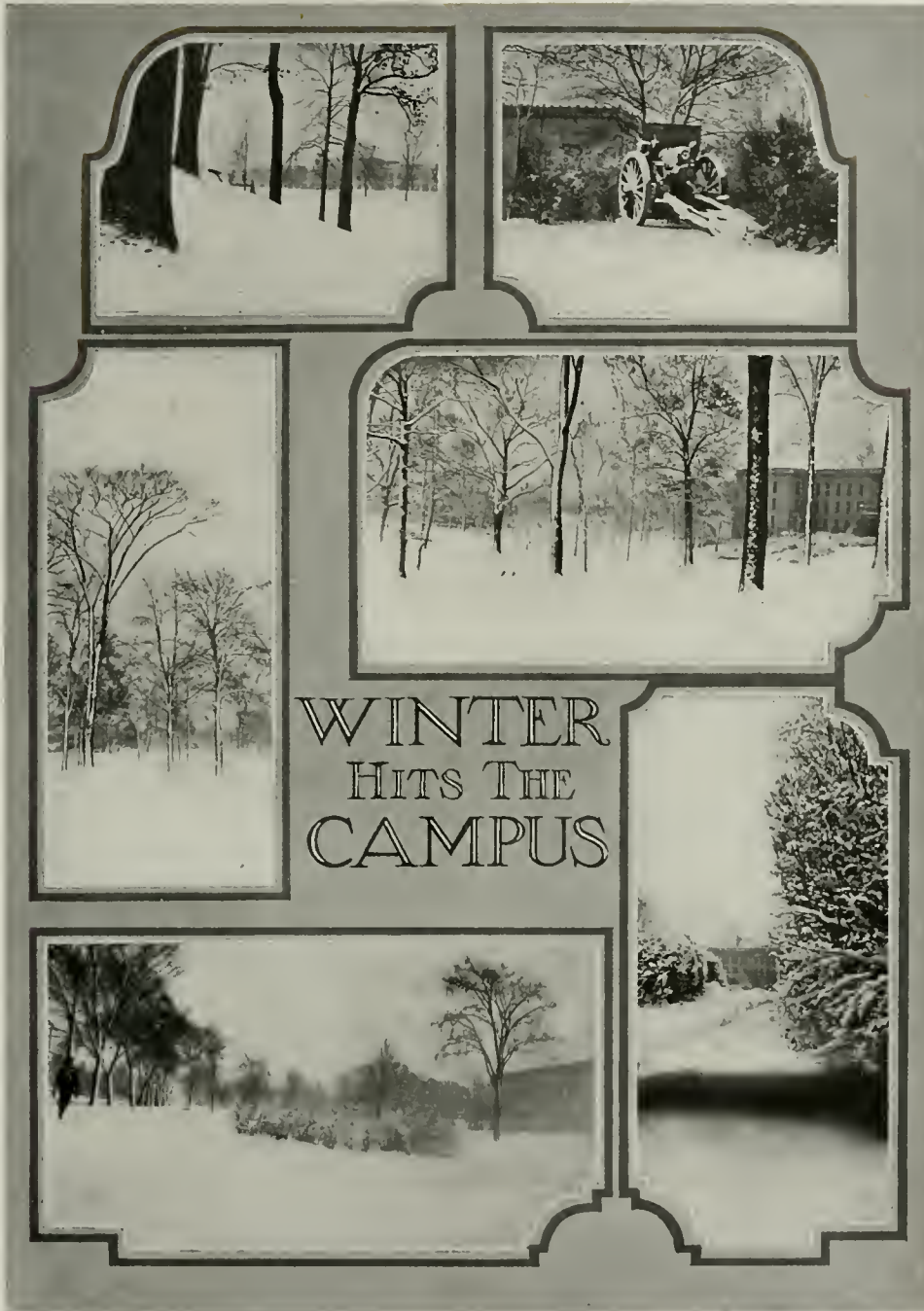
HITS *and* BITS





CO-EDS

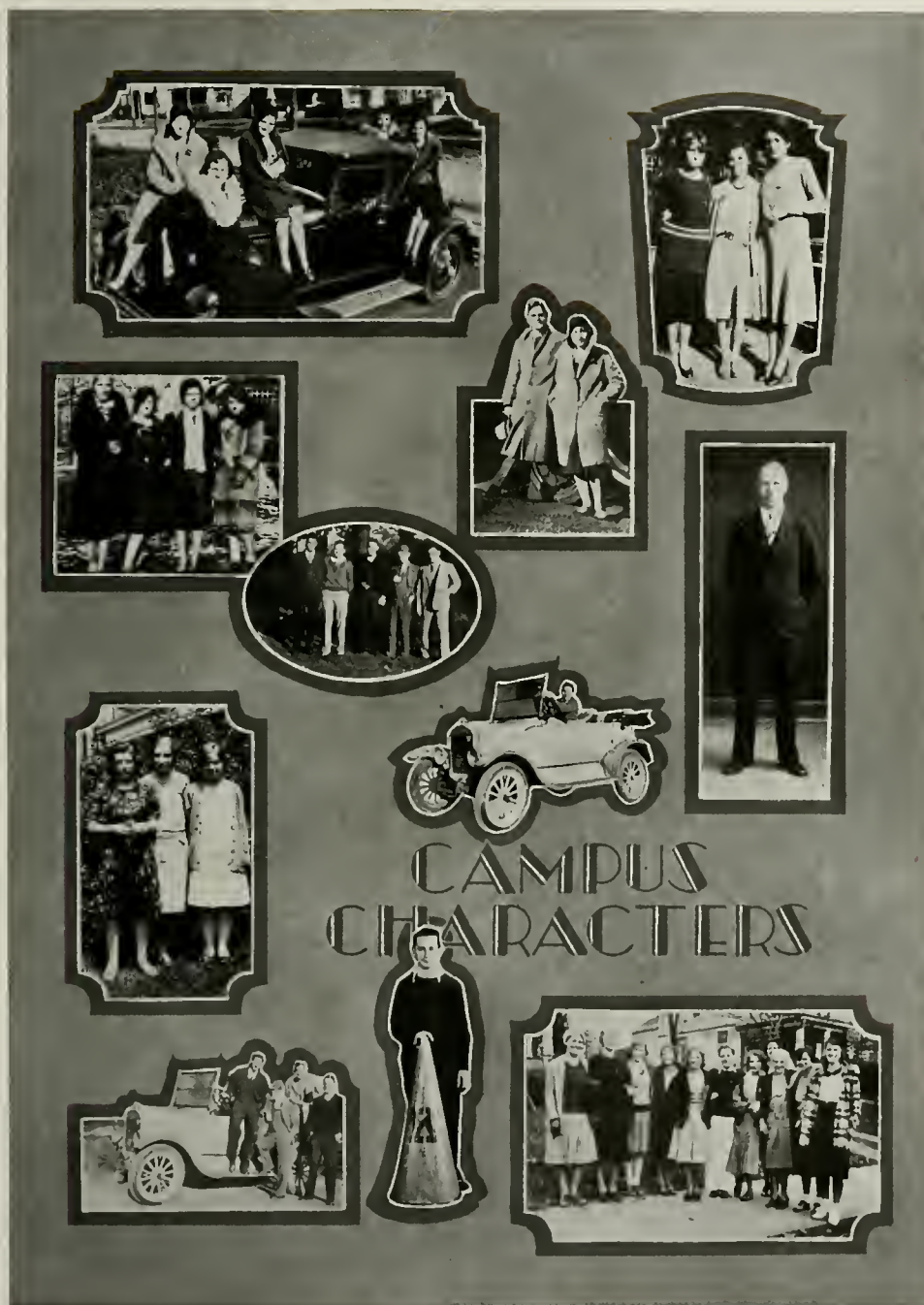






ACTIVITIES







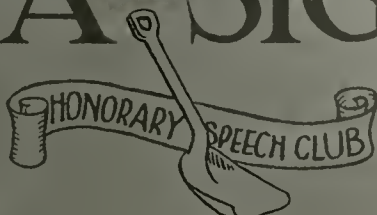
COLLEGE DAZE





BETA SIGMA

EMBLEM
THE
SHOVEL



MOTTO
"MOO, MOO, MOO"

BULLS



CALVES



IN
PASTURE



College Calendar

SEPTEMBER

- 26th—Freshman register and take entrance tests.
- 27th—Formal registration for freshman. Dean Verder lectures freshman women.
- 28th—Vesper service under Dr. Engleman and Mr. Rumold.
- 29th—Upper classmen register.
- 30th—All classes meet. Football team guests of Kent Rotary at luncheon.

OCTOBER

- 1st —Y. W. C. A. holds picnic for freshman women. First issue of Kent Stater.
- 3rd—Reception and dance for student body in gym. Mt. Union defeats Kent at Alliance, 18-6.
- 6th—W. A. A. meeting in the gym—Moulton hall election.
- 7th—Pledges begin to assume the angle.
- 6th—Reception and dance for student body in gym. Mt. Union defeats Kent
- 8th—Big and Little Sister tea at Moulton. Y. W. C. A. meets.
- 9th—Pep meeting and snake dance. Coach Wagoner speaks.
- 10th—Faculty Club meets at Moulton.
- 11th—Akron defeats Kent at Akron 12-6.
- 13th—Men's Faculty Club meets at Franklin Hotel.
- 14th—W. A. A. meets. Dean Verner lectures women participating in outside work.
- 16th—Freshman House Mothers party at Moulton.
- 18th—Open house at Moulton. Kent loses to Case at Cleveland 6-0.
- 20th—College Social Committee meets.
- 21st—Social Dancing begins with a bang.
- 22nd—First Assembly. Women's league meets.
- 23rd—Sororities now rushing the babes.
- 25th—Ashland ties Kent here 0-0.
- 27th—Kent State Council meets.
- 28th—Assembly. Governor Cooper speaks. Debate team meets. Burr staff meets.
- 29th—Dean Verder starts series of freshman talks. Moulton Hall party. Intramurals start.
- 30th—Fraternity men not on speaking terms.
- 31st—NEOTA in Cleveland. Hot dawg! No skool.
So endeth the first lesson.

Drugs

Candy



“Everything You Expect”

In a

MODERN

DRUG STORE

at

HALE B. THOMPSON'S

REGISTERED PHARMACIST

Corner Main and Water Streets

Telephones 150—151



Magazines

Stationery

When patronizing Advertisers it will pay you to mention The Chestnut Burr

NOVEMBER

- 1st—Kent beats Hiram 6-0. Team hauls Gamma farmers away.
- 2nd—Somebody died.
- 3rd—Band practice.
- 4th—Miss Sublette in hospital for ear treatment.
- 5th—Pan-Hellenic meets. Girls bowl.
- 6th—Kent Stater out. Two men hurt in rush.
- 7th—Football laddies leave on fatal trip to Columbus.
- 8th—Kent 26, Capitol 0. Hot Hooves!
- 10th—Trustees meet.
- 11th—Class elections. Dirty work begins. No afternoon classes.
Armistice day. Thank God for that.
- 12th—'Nother Stater edition.
- 13th—Nothing doing.
Doctor Stewart goes swimming with Dean Manchester.
- 14th—Pep meeting.
- 15th—Kent 14, Defiance 7. Home-coming game.
Kent Stater issues extra.
- 17th—Faculty Club meets.
- 18th—Debate squad meets. Strong wind.
- 19th—Lowry Hall party.
- 20th—Faculty women hold supper party.
- 21st—All-College dance in gym. No liquor!
- 22nd—Alpha Psi Omega luncheon in Cleveland.
- 24th—Debate team defeats Akron University.
- 26th—Assembly.
- 29th—Dance orgy at Moulton.
When repairing old oil lamps always save the old wicks.
They make excellent pipe cleaners or shoe laces. Advertisement.

DECEMBER

- 1st—All back from Thanksgiving recess. Wagoner and Begala lament the loss of turkeys.
- 2nd—Class elections. More dirt. Assembly.
- 3rd—Somebody born.
- 4th—Somebody died.
- 5th—Somebody happy.
- 6th—Somebody sad. (Pledges)
- 10th—Y. W. C. A. bazaar. Big bizz.
- 11th—Register for winter term.
- 12th—All Greek letter dance by well known sorority.
- 13th—Faculty club party. Old folks make merry.
- 15th—No soap.



Gruen Prestige Costs No More
The Name on the Watch Dial
is All Important
GRUEN

Official College Jeweler

G. F. Elgin

Jeweler and Optometrist
141 N. WATER STREET

*Service
Courtesy*

*Efficiency
Quality*

S. C. Bissler & Son

SPECIAL FURNISHINGS
FOR FRATERNITY AND
SORORITY HOMES, IN-
CLUDING

Double Deck Beds
Lounge Suites
Dining Tables
Rugs, Carpets
Lamps and
Study Desks

*Complete Home Furnishers
Funeral Directors*

Corner Main and River Streets
Telephone 530
KENT, OHIO

Compliments of

**Kent's Leading
SHOE STORE**

Brownbilt Shoes
FOR MEN ... FOR WOMEN

HOSIERY RUBBERS

**Greene-Kertscher
and Mitchell**

*"We Fit Your Feet and Feature
Fit"*

106 E. Main St. KENT, O.

**WALK-OVER
SHOES**



For Men



For Women



For Women
Featuring

FIT STYLE COMFORT

Greene & Kertscher

Opp. Court House RAVENNA, O.

When patronizing Advertisers it will pay you to mention The Chestnut Burr

- 16th—"Dust of the Road" by Alpha Psi Omega.
- 17th—Harold Jones buys shroud for his car.
- 18th—Kent wallops Case in ye basket balle game.
- 19th—No more teachers, no more books, no more actives, angry looks.
- 20th—Kent takes the wind out of Capitol's sails.
 'Twas the night before Christmas and all the boys made merry. Poor Mary.
 Santa leaves Buryl Engleman a new hat.

JANUARY

- 1st—New year gets off to hot start.
- 2nd—Kent beats Youngstown.
- 3rd—Skool again. Miss Crane at Moulton.
- 6th—Mose Hall gets first fan mail.*
- 7th—Apparatus club meets. Mr. Altmann wins by fall.
- 8th—Kent takes Muskingum 35-33.
- 9th—All-College dance.*
- 10th—Kent plays at Wooster.*
- 11th—Freshman basketball starts.
- 12th—Dean Verder still lecturing.
- 13th—First birthday party at Lowry.
 Intra-Fraternity handball begins.
- 14th—Faculty meeting. Kent downs Hiram in hard court tilt.
- 15th—Freshmen still being lectured. Faculty women eat.
- 17th—Basketball, Heidelberg at Tiffin. Delta Sigs hold open house.
- 21st—Wooster trims Kent. A sad tale.
- 24th—Pi Kappa Sigma formal dance. Wrestling Manager Hawk announces he won't buy any more cigarettes.
- 28th—Alpha Sigma Alpha Inter-Sorority tea.
- 29th—Commerce Club meets.
- 31st—K-P Club meets.

FEBRUARY

- 2nd—Prexy approves College Theatre.
- 5th—Ohio Northern plays here. Kent gets taken again.
- 6th—Theta Sigma Upsilon annual valentine dance.
- 7th—Kent grunt men lose to Ohio State.
- 8th—College Social Committee meets.
- 9th—Lester Sabin misses a date.

* Kent gets beat by some team.

The cover for
this annual
was created by
The DAVID J.
MOLLOY CO.
2857 N. Western Avenue
Chicago, Illinois



Every Molloy Made
Cover bears this
trade mark on the
back lid.

This Annual was
Produced by

The Ziegler Printing Co., Inc.
BUTLER, PENNSYLVANIA



*Leading School Annual Printers
for Twenty Years*



Specialists in Good Printing and Binding

When patronizing Advertisers it will pay you to mention The Chestnut Burr

10th—Tri Sigs rushing again.
11th—Faculty club meets.
15th—No soap.
18th—New regulation size wrestling mat arrives.
21st—Kent scores double victory. Wrestlers down Miami, basketballers wrestle and throw Marietta.
23rd—Celebrate Washington's birthday by sleeping in.
25th—Kent gets revenge. Kent 40, Ohio Northern 31.
27th—Portage County tournament at Kent court.
28th—Kent plays Kenyon again. Soft.
29th—Wasn't no such date. Kan't fool us.

MARCH

1st—Phi Alpha Alpha pledges ride the goat.
2nd—Debate, Kent vs. Baldwin-Wallace.
4th—Intra-Mural gym meet.
6th—Sectional basketball tournament at Kent. Gate crashing becomes a fine art.
10th—Delta Phi Sigma celebrates seventh birthday.
12th—Delts take Intra-Mural swimming meet. Everything all wet.
13th—Alpha Sigma Tau initiate.
14th—All-Greek dance at Moulton.
20th—'Nother quarter gone.
28th—Kent State Council courtesy dance. Postponed.

APRIL

1st—Fooled again!
2nd—Debate. Kent vs. University of Vermont. Kent wins.
?—Junior-Senior Prom.
25th—Sigma Tau Gamma dinner-dance.
30th—Staters looking for Chestnut Burr staff.

MAY

2nd—Delta Phi Sigma Dinner Dance.
15th—Spring Home-coming.
16th—Baseball, Baldwin-Wallace at Kent.
30th—Memorial Day. Staters still looking for the Burr staff.
31st—Baccalaureate.

JUNE

4th—Class Day.
5th—Commencement.
6th—Another Chestnut Burr starts.
7th—1931 Burr staff found in Venezuela.

SPORTING GOODS



O'SHEA
HONOR AND CLASS
SWEATERS

SPECIAL PRICES
To Teams, Class, Clubs, Fra-
ternities and Sororities



Trade In Your
Old Golf Clubs



**The Central Hardware & Factory
Supply Co.**

200 South Main Street

Phone BL3138

AKRON, OHIO

When patronizing Advertisers it will pay you to mention The Chestnut Burr

Mud and Humor

Famous Campus Celebrities

Few Minutes Fanelly.
Strangler Warman.
Blotter Jones.
Daniel Webster Olsen.
Beta Sigma McCaslin.
Lightnin' Joe Day.
General Musser.
Canary Slater.
Valentino M. Baker.

Kent Kampus

The classroom slowly fills with the reluctant student body. The room is warm and sultry. Suddenly the professor appears at the front of the room and begins to speak. His words flow along in an even and pleasing tone. Then suddenly, ". . . PENEPLANED . . . and the glaciers cut OFF some of . . . High POINTS. . . . I hope I'm not BORING you. . . ." And so on until the class is suddenly awakened by the bell.

Seniors

Experts have estimated that if all the ballot box stuffers in the world were allowed to vote in one election and that if all the crooked election judges in the world were allowed to judge the results of that election, that in all probability the election would be crooked. Certain activities and events which occurred last fall would put to shame all the comparatively amateur crooks in the world. Here's how it happened: The senior class held their election. 56 votes were cast. A checkup at the registrar's office showed but 48 seniors. A counter check at

the next election showed two sophomores, four juniors and two high school students, masquerading as seniors. One had got himself elected to an office. Two others were voting in all four classes on the campus. The rest were just plain amateur crooks.

Words of Wisdom from Minds of Kent State Intelligentsia

Mr. Packard: "We need five basketball players."

Mr. Wagöner: "We need better English professors."

Mr. Olsen: "I hope I'm not boring you."

Miss Nixon: "You'll have to do it this way . . ."

Dean Verder: "Now, girls, remember your manners."

Mr. Stopher: "There are no vacant positions."

Mr. Stump: "Oh ta-da-de-da-da."

Mr. Altmann: "Off the floor with those shoes."

John Burger: "Now I've got to look like a smart man."

Barber: "Shall I cut your hair close?"

Mary Donze: "No, stand off as far as possible."

Ambition

Pete Sapp is going to open an ice factory in Alaska and Mose Hall is going to be his bookkeeper.

Is It Refreshments?

Just remember—we are famous at Kent State College for our Ice Cream, Ices and Fruit Punch. Let us supply your next "Shindig".

The Perfection Dairy Company

"Milk as it Should Be"

NORTH RIVER STREET

Phone 341

The Home-coming Queen Chose Oldsmobile!

Striking Appearance, Rugged Durability, and Flashing Performance combine to make Oldsmobile the Outstanding Value in its class. Phone for a Demonstration, Kent 700.

Bradley Motor Co.

118 S. DePeyster Street

KENT, OHIO

Sales

Service

DAVEY men carry away from Kent each year many memories of good fellowship extended them by Kent State College students, faculty, and administration.

IT is our hope that through your contacts with them and your residence in Kent, the home of the Davey Institute of Tree Surgery, you have gained a greater appreciation of the beauty of trees, and the importance of the Tree Surgeon's work.

AS an educational institution concerned with the dissemination of knowledge which will make for the extension of such an appreciation among the American people, we invite you as teachers to make use of the findings of our research department in teaching your students of the enemies of trees and their control, and related subjects.

THE DAVEY TREE EXPERT CO., Inc.

KENT, OHIO

When patronizing Advertisers it will pay you to mention The Chestnut Burr

Kent's Own Believe It or Not

Don Straub won the 118 lb. wrestling championship of the school without wrestling one bout.

Dr. James O. Engleman is not president of Kent State College.

No person has ever graduated from this college.

There are fifteen fraternities at Kent State College.

The faculty of the college includes but seventeen professors.

Representatives from five groups competed in the intramural wrestling meet, last spring.

The Delta Phi Sigma fraternity won the yearly trophy in intramural sports last year, although they did not win as many events as the Kappa Mu Kappa boys.

There never was any Kent State Normal School.

It is possible to walk from any building on the campus, to any other building, without going outside.

Mr. Johnson was once Dean of Men of this school.

The Kent Stater, which was established in 1927, carries "volume V", which means that it has been published five years.

During the World War there were only 18 men enrolled at Kent and during the Civil War there were none.

At one time during 1930 there were more men enrolled at this school than women.

Kent State College had no fullback during all of last fall's football games.

Jim Shelly won his first inter-collegiate wrestling match before he was a member of the Kent team.

The yearly snowfall is greater at Kent than anywhere in Greenland.

The Kent State campus is warmer at all times of the year, than the southernmost part of Africa.

George Washington never attended this school.

Art Stesjkal has never been thrown in a wrestling match.

KENT NATIONAL BANK

*"The Bank of Courtesy to
College Students"*

\$

Checking Accounts Solicited

4% Paid on Savings

Safety Deposit Boxes For Rent

\$

4 Percent and Safety

HELL WEEK

"My stomach is empty, my belly is flat. . . . Most high and benevolent kind sir. . . . Yes sir, Lydia Pinkham was once very popular. . . . The judge will please be seated. . . . Get those *##%@—off their feet. . . . Oh say, judge. . . . Case dismissed Shall I wax this too. . . . My name is Gooperfeathers. . . . David was a shepherd lad, the plucky little cuss. . . . To repair old mouse traps always use caution. . . . Wipe that smile off. . . . Use the handles only tonight. . . . Who the hell dealt this mess. . . . —To that Cabin in the hill-s-s-s-s-s-s. . . . Can that yappin' All right, for gosh sakes get going there scum!"

Do You Heed the Golden Rule?

THE merchants who have purchased advertising space in THE CHESTNUT BURR are the business men of Kent who are really interested in Kent State College. Their establishments offer the utmost in convenience, value, and service to Kent State students. Inasmuch as they are interested in us, and we need and buy what they have to offer, it would seem only right and fair that we should at least visit them occasionally. THE BURR staff urges you to patronize its advertisers. The dividends will return to YOU.

When patronizing Advertisers it will pay you to mention The Chestnut Burr

Kent's Own Believe It or Not

Explanations

Straub's matches were all forfeited.

* * *

Dr. Engleman was installed and inaugurated as president of Kent State Normal College.

* * *

A college graduates its students but the students are graduated and do not graduate.

* * *

Webster defines fraternities as student organizations and therefore the sororities are included.

* * *

The heads of the departments are professors. The rest are classed as assistants.

* * *

In addition to the regular groups competing, two men, through an error, were allowed to wrestle who were unaffiliated.

* * *

The Delta Phi Sigma teams took enough second places to score highest in the end.

* * *

This college was formerly called Kent State Normal College.

* * *

The Kent Stater was preceded by the Spotlight and dates from its establishment.

* * *

When the football team reported for fall training, one week before school opened, the men were allowed to register early and did so.

Kent's backfield men are called quarterback, blocking half back and two wing backs.

* * *

Shelly wrestled against Ohio State as a freshman and threw his opponent, although he was not a member of the Kent team.

* * *

Requirements for a First Class Sorority House:

1 shack for an address to receive mail from home and males from other towns.

1 telephone with a permanent busy signal so as to make the sisters appear popular.

1 chaperon. Preferably deaf, dumb, blind and paralyzed.

1 large porch, plenty of cushions and one swing.

1 can best black paint for the street light in front of the house.

A whistle and an official kiss in order that the sisters may have something to teach their dates.

1 accessory rear window, without lock.

1 sister employed in the office of the dean of women.

27 to 31 other sisters, otherwise employed.

THE CITY BANK

KENT, OHIO



Assets Over \$1,000,000.00

Safety Deposit Boxes for Rent



4 Per Cent on Time Deposits



DIRECTORS

M. L. DAVEY
HENRY HORNING
B. J. WILLIARD

H. H. LINE
D. L. ROCKWELL
M. G. GARRISON

E. F. GARRISON

When patronizing Advertisers it will pay you to mention The Chestnut Burr

AUTOGRAPHS



Are You Willing to Forget?

Soon many of you will be leaving the class-rooms and campus of Kent State for the last time as a student. You have lived and been a part of the college for four years. You have fought her battles, and your own. You will emerge from these most precious years of your life with a broader, finer outlook on life.

Your copy of The Chestnut Burr will constantly remind you of your happy days at Kent. Are you willing to forget the college which nurtured you for four years, or will you follow its progress through the columns of its paper? A dollar and a half sent to the Kent Stater will bring you tidings from Kent fifty-two times during the next year.

THE KENT STATER

Issued Weekly By the Students of Kent State College

Hart Schaffner & Marx CLOTHING

Walk-Over Shoes Men's Furnishings

Shirts\$1.25 to \$5.00
Tye-Best Neckwear.....\$1.00
Monito Hose 50c

TUXEDO RENTAL

D.H. Green
CLOTHING & SHOES
KENT, OHIO

The Horning Coal and Supply Company

furnished sand, gravel, and cement for the remodeling of Merrill Hall, and Administration Building.

furnishes coal to the college.

supplies coal to the fraternity houses.

and pleases all Kent.

Phone 275-W

113 LAKE STREET

When patronizing Advertisers it will pay you to mention The Chestnut Burr

AUTOGRAPHS

The
Robin Hood



Delicious Food
Moderately Priced



NEXT TO KENT STATE CAMPUS

Why Not
"Say It With Flowers"?

We Furnish Flowers for All
Occasions. Phone us at Kent 623



KENT FLORAL
COMPANY

South Water at School Street

We Telegraph Flowers



OFFICE SUPPLIES

THE NATIONAL BLANK BOOK & SUPPLY CO.
36 NO. MAIN ST., OPP. N.O.P. BLDG.



AKRON, OHIO

Across From The Ohio-Edison Building

When patronizing Advertisers it will pay you to mention The Chestnut Burr

AUTOGRAPHS

SAVE EVERY DAY

at

DONAGHY'S

CUT RATE DRUG STORE

The Rexall Store

The Kodak Store

Every Need of

KENT STATE STUDENTS

Supplied

at

Campus Supply Store

Postal Sub-Station No. 1

Firestone
TIRES

BATTERY SERVICE

Complete Alemiting

Gas and Tire Service

Veedol and Mobiloil Lubricants

Young's Tire Service

INCORPORATED

MAIN AT DEPEYSTER

CALL **44** KENT



See Our
Display
Offices
of
Tomorrow

THE COMMERCIAL OFFICE FURNITURE COMPANY

“SCHROY’S”

E. MARKET AT BROADWAY

AKRON, OHIO

When patronizing Advertisers it will pay you to mention The Chestnut Burr

STEINER'S BOOK STORE

"The Students' Store"

» «

College Supplies

Gifts
Books
Stationery
Party Goods
Greeting Cards
Dennison Goods
Kodak Finishing

» «

E. R. Steiner

Phone 445

141 E. MAIN ST.

THE Kneifel Grocery Co.

Supplies Kent State's Leading
Fraternities



Free delivery of the best foods
at liberal discounts to fraterni-
ties, sororities, and other college
organizations.

It will pay you to see us at 142
North Water Street, or phone
Kent 43 and 42. Do it today.

Social Practice Decrees

*Flowers for Those Formal
Events*

A Corsage from Richards will
"put you right" for the evening
with her. And the price will fit
your pocket-book!



Phone 74

**Richards
Flower Shop**

1312 North Mantua Street
KENT, OHIO

MEET YOUR FRIENDS AT

THE PARADISE

After classes, after a game,
a show, or a dance, drop in
at The Paradise. A con-
genial place where you can
chat with your friends, en-
joy a delicious tid-bit —
and relax.

The Paradise
CONFECTIONERY

Right on Main St., Diagonally Across
From the New Kent

OUR HOME-MADE CANDIES ARE
DELICIOUS

When patronizing Advertisers it will pay you to mention The Chestnut Burr

Kent State College

DR. JAMES O. ENGLEMAN, *President*



A College of Liberal Arts, giving the degrees A.B. and B.S.

A College of Education, granting the degree B.S. in Education.

A special two-year course leading to a diploma.

A special three-year course in Physical Education.

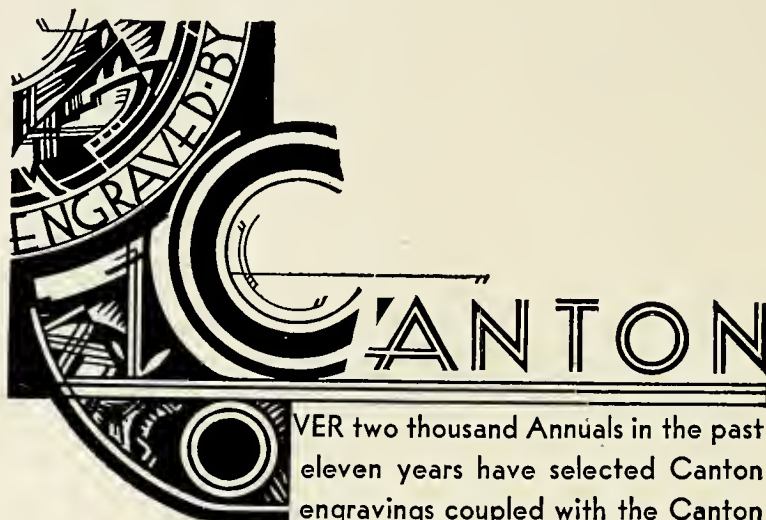
Accredited by the North Central Association, Class A rating, American Association of Teachers Colleges. Accredited by the State Department of Education for training in elementary school, kindergarten-primary, home economics, physical education, industrial arts, and music.



Kent State is a state-supported college, situated on a hill overlooking the city of Kent, in the heart of the most beautiful section of Ohio. Extraordinary facilities in buildings, laboratories, gymnasium, and library, a fine faculty, and a liberal administration give students the utmost in opportunities. Among other attractions is the largest college theatre stage in the state, well lighted with the latest of equipment. Kent's athletic teams are respected and feared throughout the Ohio Conference, and her weekly paper and yearbook rate with the best, and afford students interested in journalism a field in which to exhibit their talents.

This advertisement is inserted in behalf of Kent State College by the editorial and business staffs of *The Chestnut Burr*. For further particulars address The Registrar, Kent State College.

When patronizing Advertisers it will pay you to mention The Chestnut Burr



OVER two thousand Annuals in the past eleven years have selected Canton engravings coupled with the Canton plan of building a distinctive Annual within its budget. Ask any editor or manager about their experience with Canton Service. The Canton Engraving and Electrotypes Company, Canton, Ohio.



